

TRATTENIMENTI per CAMERA

Opus XXII, Bologna - 1660

for Trumpet, Violin & Organ

Violin

Maurizio Cazzati (1616 - 1678)

Arr. Michel Rondeau

Aria (Prima parte) ♩ = 100

5

10

15

20

25

30

36

40

44

Seconda Parte

Cazzati, Opus XXII - TRATTENIMENTI per CAMERA - Violin

48 *tr*

53 *tr* 1.

57 2. Terza et Ultima parte

61

64

68

71

74

77 *tr*

80

83 *tr*

86

tr
rit.

2. Ballo dell'Aria

94

99

Sua Corrente

112

119

127

135

144

151

3. Ballo delle Dame

Musical staff for 'Ballo delle Dame' starting at measure 161. The staff is in treble clef with a common time signature (C). The music begins with a repeat sign and contains several measures of eighth and sixteenth notes.

Musical staff for 'Ballo delle Dame' starting at measure 163. The staff is in treble clef with a common time signature (C). It features a sequence of sixteenth notes followed by a repeat sign and a measure with a fermata and the number '4' above it.

Musical staff for 'Ballo delle Dame' starting at measure 171. The staff is in treble clef with a common time signature (C). It includes trills (tr), double accents (2X), and a 3/4 time signature at the end.

Sua Corrente

Musical staff for 'Sua Corrente' starting at measure 179. The staff is in treble clef with a 3/4 time signature. The music consists of eighth and sixteenth notes.

Musical staff for 'Sua Corrente' starting at measure 183. The staff is in treble clef with a common time signature (C). It features a double accent (2X) and ends with a repeat sign and a common time signature.

4. Ballo de Cavaglieri

Musical staff for 'Ballo de Cavaglieri' starting at measure 193. The staff is in treble clef with a common time signature (C) and a key signature of one flat. It begins with a repeat sign and contains several measures of eighth and sixteenth notes.

Musical staff for 'Ballo de Cavaglieri' starting at measure 195. The staff is in treble clef with a common time signature (C) and a key signature of one flat. It features a sequence of eighth and sixteenth notes.

Musical staff for 'Ballo de Cavaglieri' starting at measure 200. The staff is in treble clef with a common time signature (C) and a key signature of one flat. It contains a series of eighth and sixteenth notes.

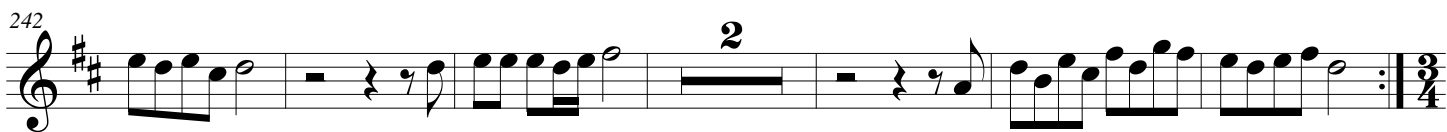
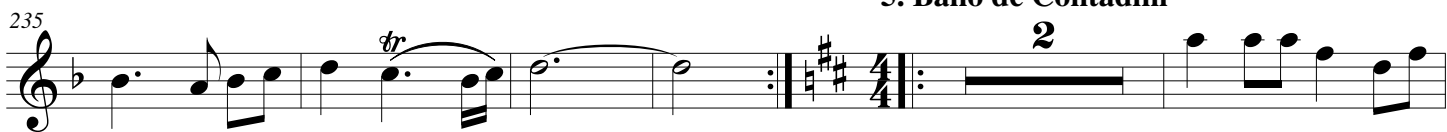
Musical staff for 'Ballo de Cavaglieri' starting at measure 204. The staff is in treble clef with a common time signature (C) and a key signature of one flat. It includes a section labeled 'Sua Corrente' and a 3/4 time signature.

Musical staff for 'Ballo de Cavaglieri' starting at measure 209. The staff is in treble clef with a common time signature (C) and a key signature of one flat. It features a measure with a fermata and the number '4' above it.

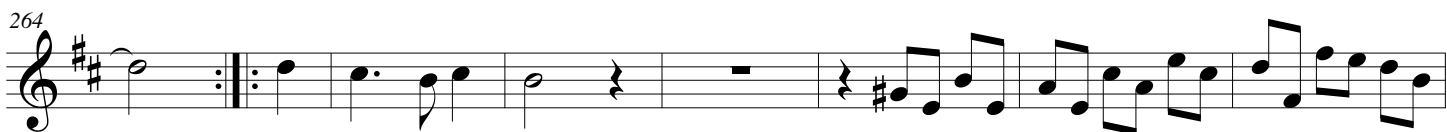
Musical staff for 'Ballo de Cavaglieri' starting at measure 219. The staff is in treble clef with a common time signature (C) and a key signature of one flat. It includes a trill (tr) and a measure with a fermata and the number '2' above it.



5. Ballo de Contadini



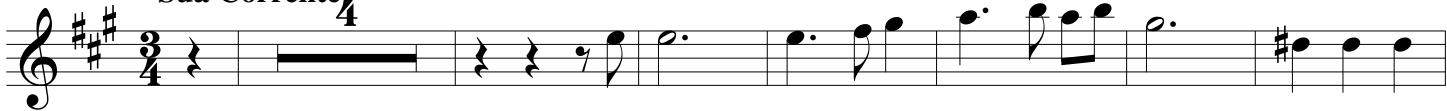
Sua Corrente

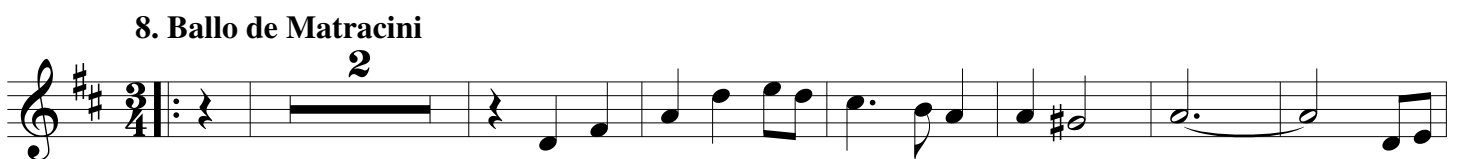
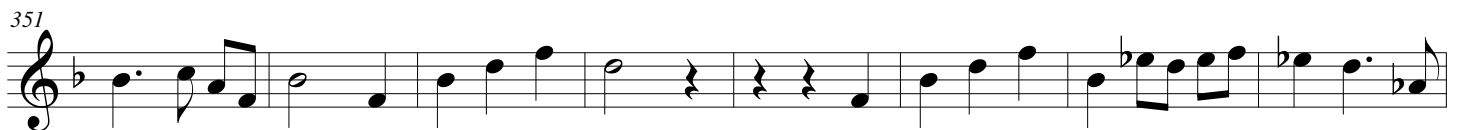
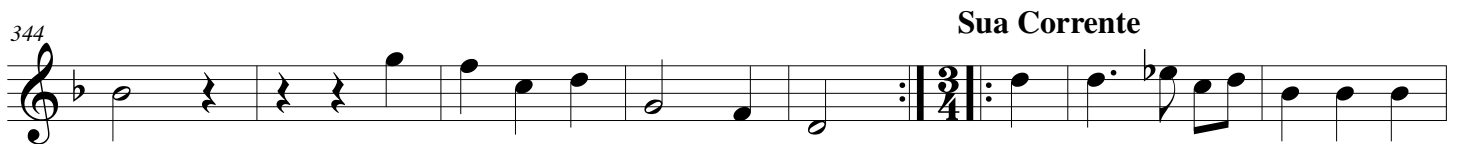
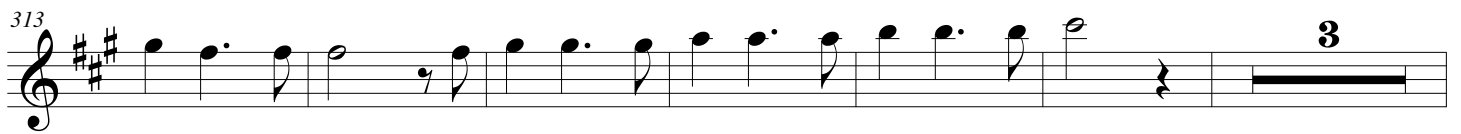


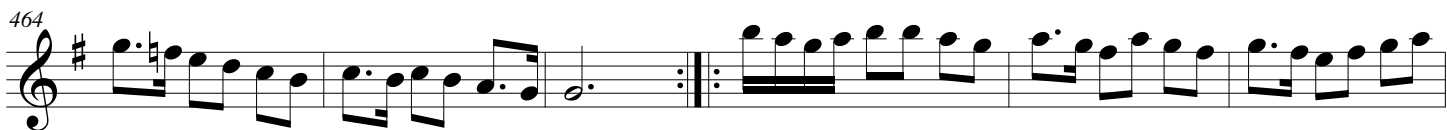
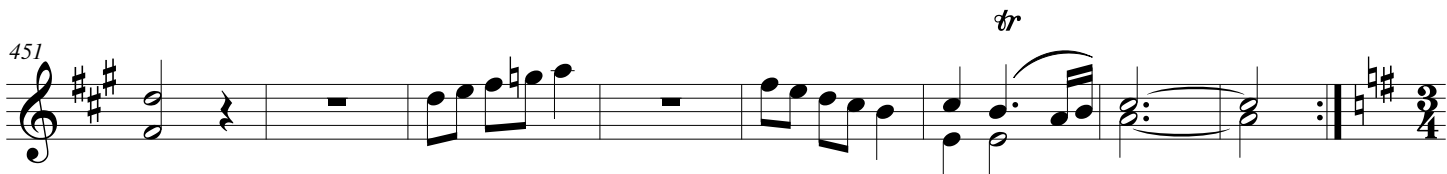
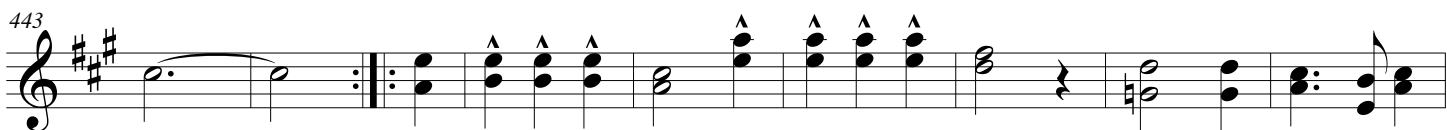
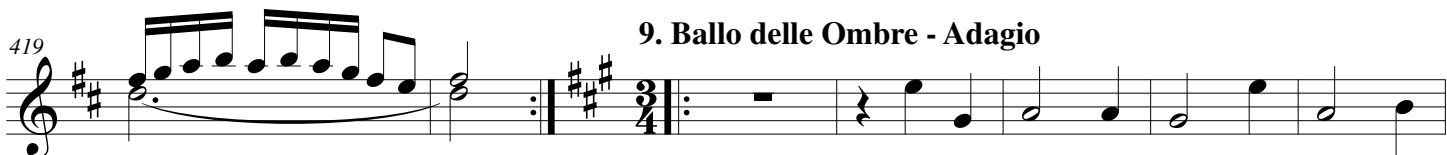
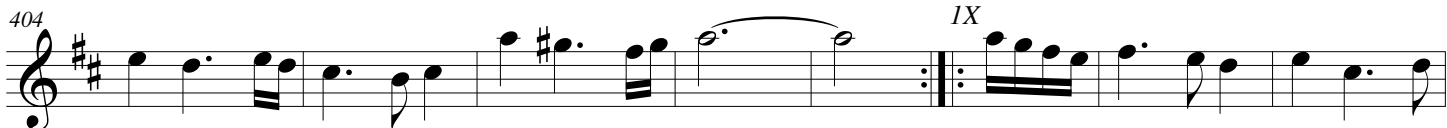
6. Ballo de Tedeschi



Sua Corrente







470

Sua Corrente

4

485

493

11. Brando Primo

501

2 IX

508

3X-Fine

12. Brando Secondo

513

D.C. al Fine

518

524

13. Passacaglio

528

538

546

551

558

566

574

583

589

595

600

606

14. Ciaccona

612

619

624

630

635

640

644

648

653

15. Capriccio sopra 12 Nozze

658

664

668

