

B.C.

MISERERE A 2 DESSUS 2 FLUTES

et basse cont.

M.A. Charpentier

7
6 6 98 4/3 4 #4
10 2

13
3#4 65 # b# 56 # 7

19
56 # # b 6 # 6

25
65 # b# 56
43

31
4 3 # # #4

37
56 76 76

43
7 43 b 6 # 7 43 # #b
5 5

49
76 76 56 76 5
34 43

55
76 5 # # 6 #
34 43 5

61
#4

B.C.

66
7 98 76 5 \flat 6 7 7 56 7 7 \flat #

72
6 # # 4

78
43 # 56

84
567 43 # # #
#3#45

90
 \flat 6 6 4 3

96
5#6 5#6 76 # \flat \flat

102
\flat 6 # \flat

108
98 # # #6 4 3 #
43

114
\flat # 6 4 3

120
4 76 98 98 76

126
98 4 3 98 98 76 76

B.C.

132

132

137

137

6 # # 2 4 3

5

143

143

b

149

149

6 6 b # # 2 #

4

155

155

4 3 # # # 5 #

161

161

6 #6 # #

4

167

167

7 765

172

172

#3443

176

176

56 #

182

182

76 5 # #

187

187

#

B.C.

192



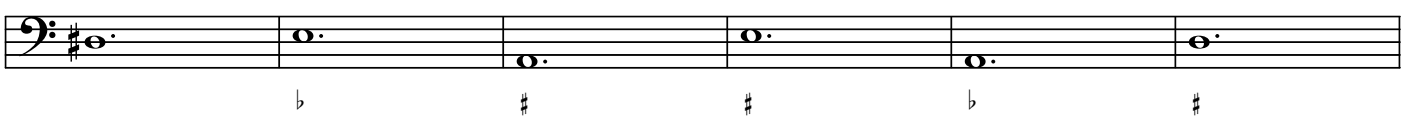
197



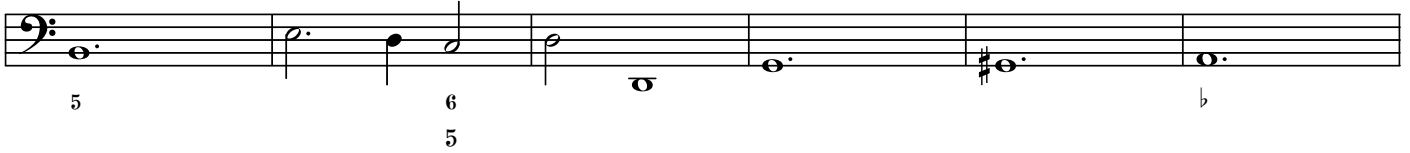
203



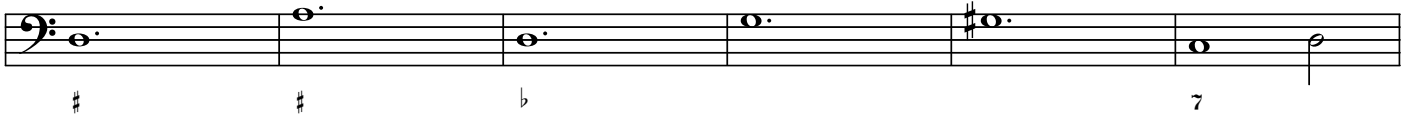
209



215



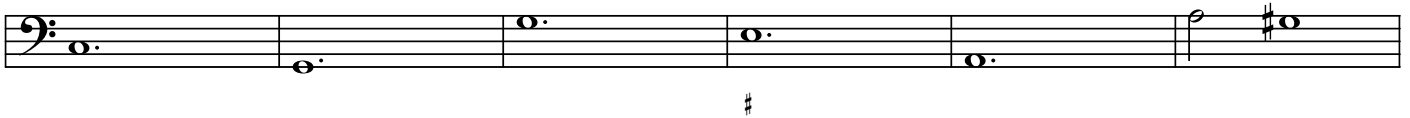
221



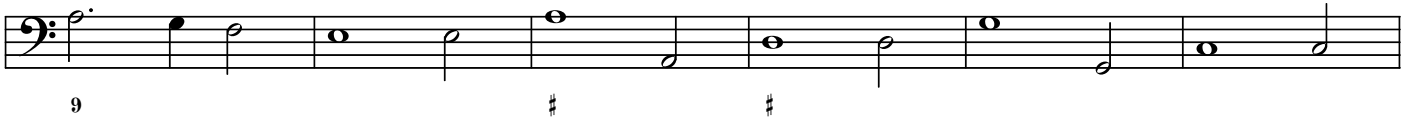
227



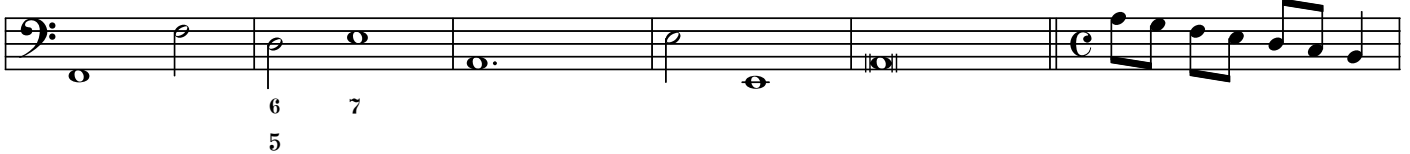
233



239



245



251



B.C.

255
b 6 43 5

261
3#4 76

267
43 43

273
98 7

279
98 76 # 76 #

285
#4 76 #4 76 76 #4 #

291
b6 #6 6 76 # 65 4 # # # b #

297
6 # #

302
#56 76 9#8 76

308
##4 4 #

314
6

B.C.

320
#6

326
6 #

332
6 # #
4

338
76 6 #

344
2 7

350
6 76 76 76 76 76 56 76

356
76 76 76 76 7#6 #7 # 6 76 #

362
98 7 98 76 1110 #76 #10 7 65 9
76 43 76 98 # # #7

368
9 #
#7 4

374
9 # #4 #6 # # # 5#6

380
6 5 # # b #
7 43

B.C.

385

6

391

6 # 5b6 76 76 #

397

b #

403

6 6 # 5b6 76

409

76 # # b

415

7 # b 43 987

421

4 3 765

427

7

433

6 43 43 # #56 7#8

439

76 7 4# 6 b5

445

6 10 b # #4

6 b5 9

B.C.

451

2 76 56
5 34

457

#4 #6 56 7#6

463

76 56 56 5 3

469

b 56 #7 56 4 6 b5 56 #4

475

56 56 34 56 34 56 34

481

56 #4 76

487

56 #4 6 7#6

493

b #4 #6

499

b 43 # b 6 # #4 b5

505

6#4 32 43 2 6 6

511

7 7#6 #

B.C.

517

76 #b b5 56 76 #

523

76 #4

529

7 # 43 6 4 3

535

43 6 4 # 5

541

56 76 # #

547

6

553

5b6 56 #6 98 7 43

559 *doux*

98 7 43 2

565

#4 # #

570

#6 #6 7#6b6

576

76 34 98 76 7

B.C.

581 *doux*

586

591

596

602

607

613

619

626

633

640

doux

B.C.

647

Musical staff for measure 647, bass clef, key signature of one sharp (F#). The staff contains seven notes: G2, A2, B2, C3, D3, E3, F#3. Below the staff are the following symbols: #, b, b, #, b#, #5.

654

Musical staff for measure 654, bass clef, key signature of one sharp (F#). The staff contains seven notes: G2, A2, B2, C3, D3, E3, F#3. Below the staff are the following symbols: 6#8, 76, #, 76 5, 34 43, #, b.

661

Musical staff for measure 661, bass clef, key signature of one sharp (F#). The staff contains seven notes: G2, A2, B2, C3, D3, E3, F#3. Below the staff are the following symbols: 76, b, #, #5, 6#8, 7#6.

668

Musical staff for measure 668, bass clef, key signature of one sharp (F#). The staff contains seven notes: G2, A2, B2, C3, D3, E3, F#3. Below the staff are the following symbols: 76, 5, 6, 5, 6, 5, 34, 43, 4, 4.

675

Musical staff for measure 675, bass clef, key signature of one sharp (F#). The staff contains seven notes: G2, A2, B2, C3, D3, E3, F#3. Below the staff is the following symbol: #4.

682

Musical staff for measure 682, bass clef, key signature of one sharp (F#). The staff contains seven notes: G2, A2, B2, C3, D3, E3, F#3. Below the staff are the following symbols: 56, 7, 43, b7.

689

Musical staff for measure 689, bass clef, key signature of one sharp (F#). The staff contains seven notes: G2, A2, B2, C3, D3, E3, F#3. Below the staff are the following symbols: b, 7, #, 7, 4, 3.