

Violino Primo, Oboe & Flauto Traversi

# Suite in E $\sharp$

a 4. voci

Fortunato Chelleri

1688 – 1757

Published by Johan Tufvesson.

Non-commercial copying welcome

*Revision* : 1.11

## Violino Primo

## Ouverture

Fortunato Chelleri (1688–1757)

## Ouverture

Violino Primo &  
Oboe

4

8

11

1.

2.

## Allegro

15

21

27

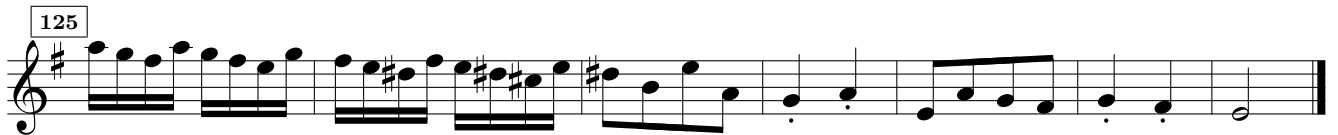
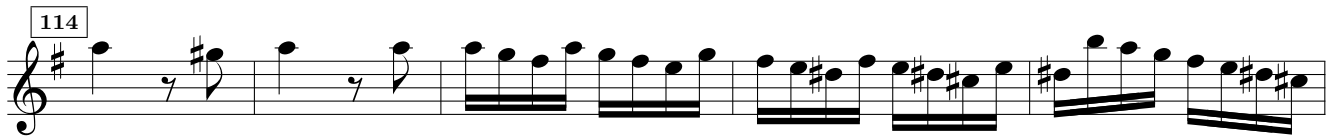
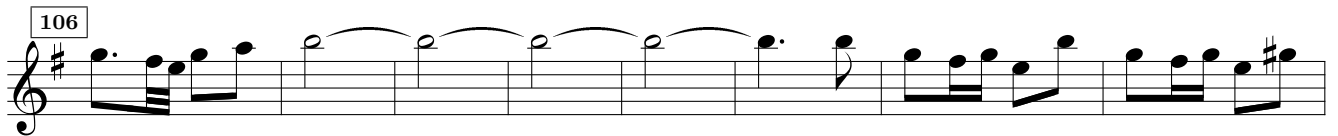
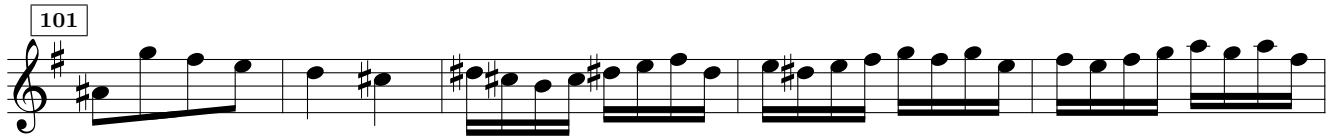
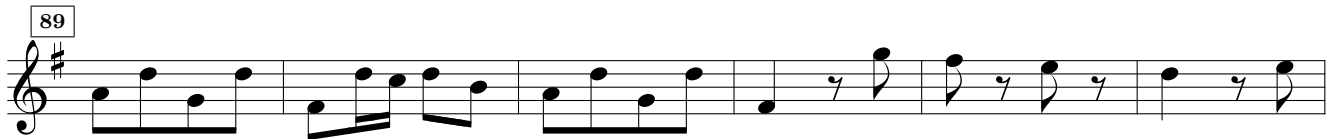
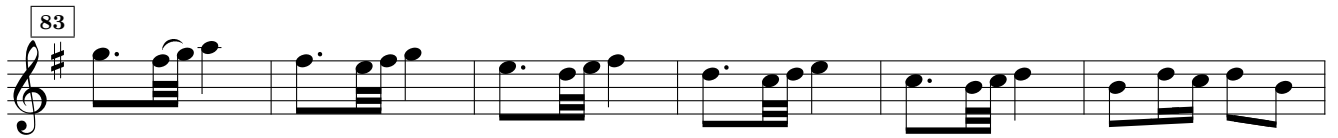
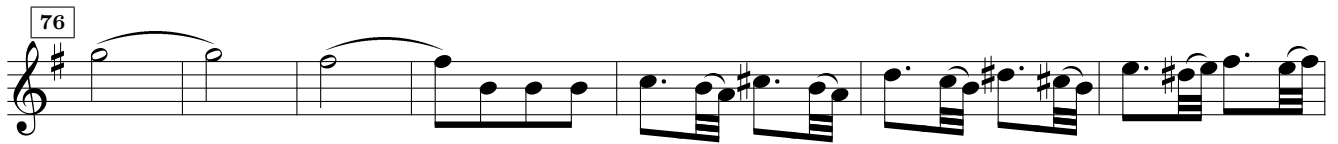
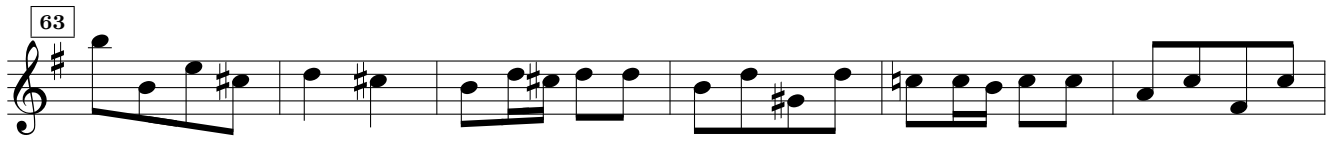
33

39

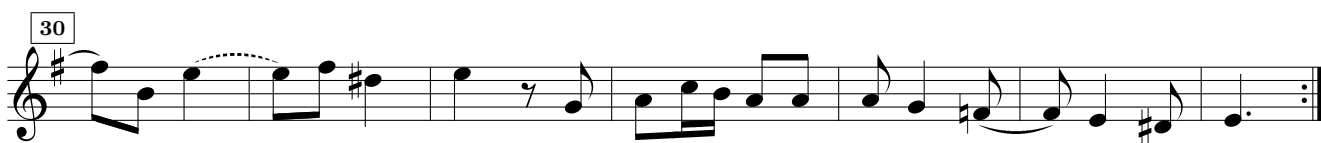
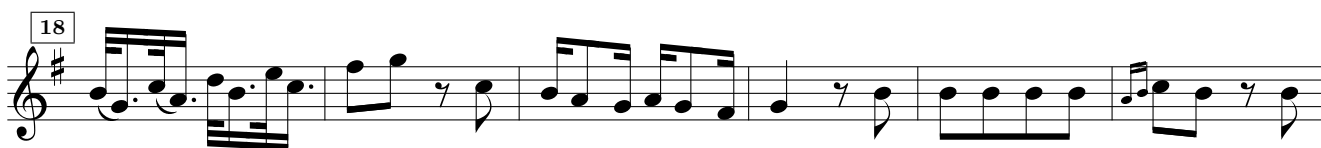
*piano*

44

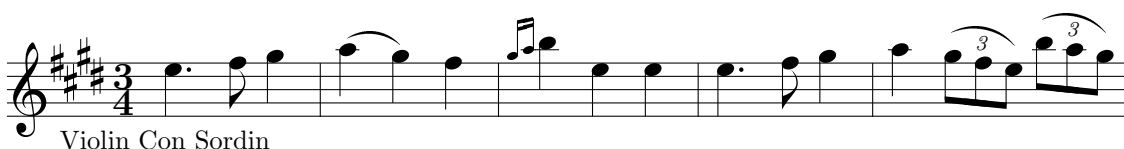
52



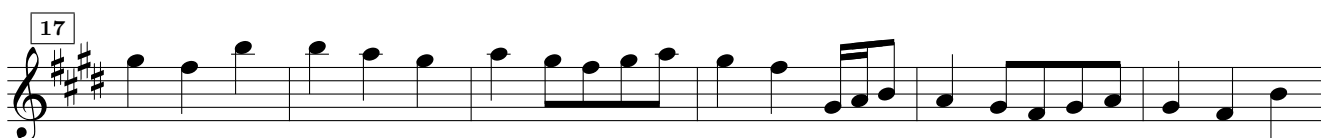
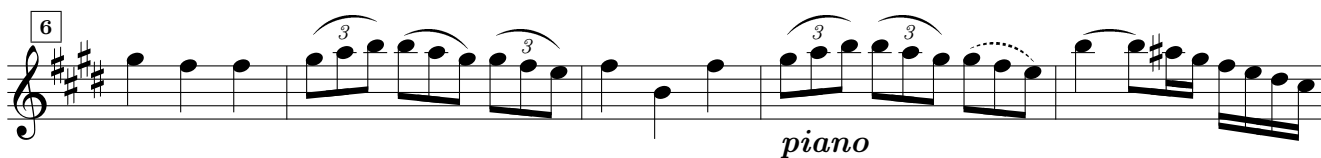
## Andante

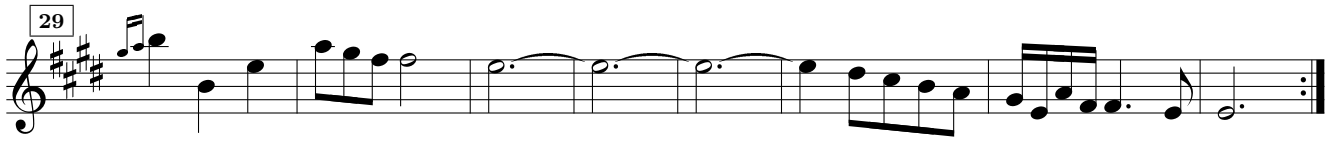
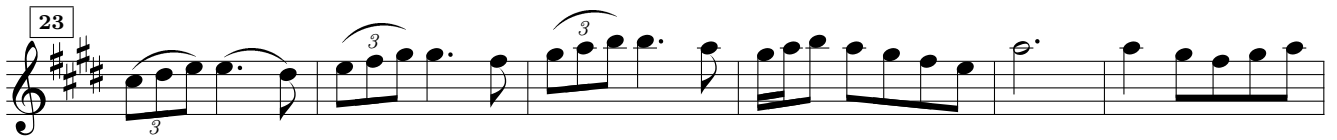


## Lamento

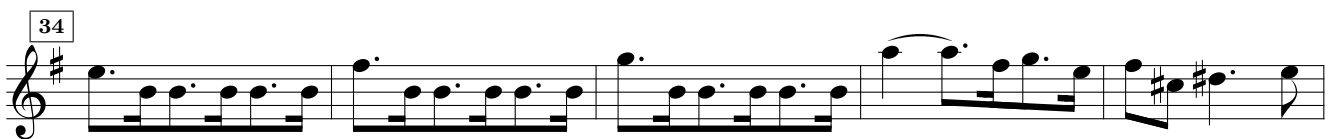
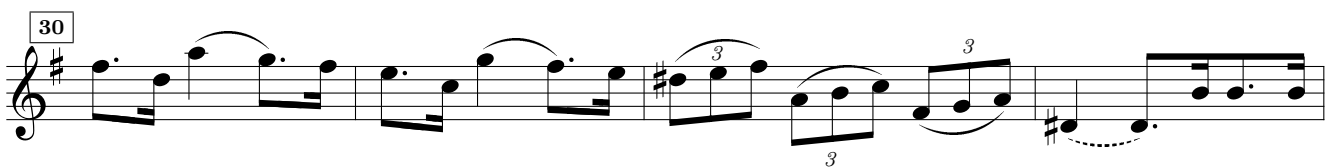
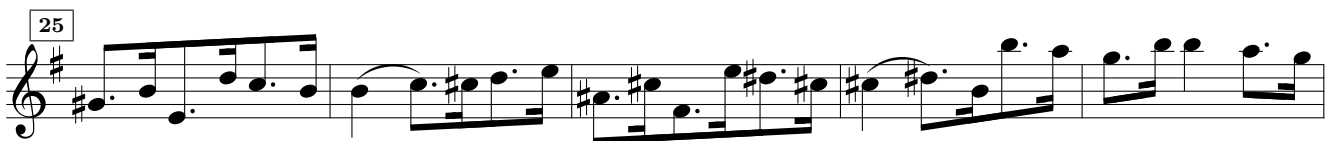
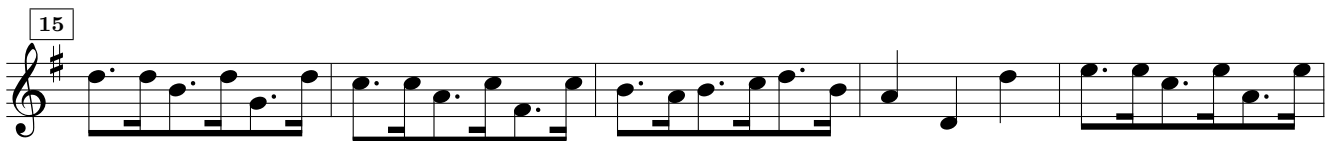
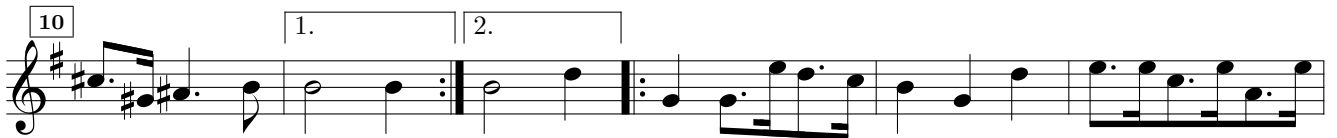
Violino Primo &  
Flauto Traversi

Violin Con Sordin





## Courante



## Gigha

Musical score for Gigha, a piece in 6/8 time. The score consists of eight staves of music. The key signature has one sharp (F#). The piece features various rhythmic patterns, including eighth and sixteenth notes, and rests. There are two triplet markings (indicated by a '3' over a group of notes) in the first staff. Measure numbers 5, 10, 15, 20, 25, 31, 37, and 42 are marked at the beginning of their respective staves. The piece concludes with a double bar line and repeat dots in the final measure of the eighth staff.

## Menuet

Musical score for Menuet, a piece in 3/4 time. The score consists of three staves of music. The key signature has one sharp (F#). The piece features a simple melody with quarter and eighth notes. Measure numbers 7, 14, and 20 are marked at the beginning of their respective staves. The piece concludes with a double bar line and repeat dots in the final measure of the third staff.