

MENUET 1 in D MINOR

(from: *Musikalische Klavierkunst und Vorratskammer*)

for Trumpet & Organ

Score (01':50")

Johann Heinrich Buttstett (1666 - 1727)

Arr. Michel Rondeau

Moderato ♩ = 120

Trumpet in C

Organ

The image displays a musical score for the first system, measures 6 through 12. It features two staves: a single staff for the Trumpet in C and a grand staff for the Organ (treble and bass clefs). The key signature is D minor (one flat) and the time signature is 3/4. The tempo is marked 'Moderato' with a quarter note equal to 120 beats per minute. The score includes various musical notations such as notes, rests, slurs, and ornaments. Measure 6 shows the beginning of a melodic phrase in the trumpet and organ. Measure 7 continues the phrase. Measure 8 features a repeat sign. Measure 9 shows a continuation of the melodic line. Measure 10 has a repeat sign. Measure 11 continues the melodic development. Measure 12 concludes the system with a final note and a repeat sign.

MENUET 1 in D MINOR - Buttstett - Score

18

C Tpt.

Org.

Detailed description: This system covers measures 18 to 24. The C Tpt. part (top staff) begins with a treble clef, a key signature of one flat (B-flat), and a common time signature. The melody starts on a half note G4, followed by quarter notes A4, Bb4, and C5. From measure 19, it features eighth-note patterns: G4-A4-Bb4-C5, A4-Bb4-C5, and G4-A4-Bb4-C5. The piece concludes with a whole note G4. The Organ part (bottom staves) consists of two staves. The right hand starts with a half note chord of G4-Bb4, followed by quarter notes G4, A4, Bb4, and C5. The left hand provides a simple bass line with half notes G3, Bb3, and C4.

25

C Tpt.

Org.

Detailed description: This system covers measures 25 to 30. The C Tpt. part (top staff) is silent, indicated by a whole rest in each measure. The Organ part (bottom staves) continues from measure 25. The right hand features a more complex texture with chords and moving lines, including a trill on G4 in measure 26. The left hand continues with a steady bass line of half notes: G3, Bb3, C4, Bb3, G3.

31

C Tpt.

Org.

Detailed description: This system covers measures 31 to 36. The C Tpt. part (top staff) begins with a treble clef, a key signature of one flat, and a common time signature. The melody starts with a half note G4, followed by quarter notes A4, Bb4, and C5. It includes a trill on G4 in measure 32 and eighth-note patterns in measure 33. The Organ part (bottom staves) continues with a similar texture to the previous system, featuring chords and a steady bass line of half notes: G3, Bb3, C4, Bb3, G3.

MENUET 1 in D MINOR

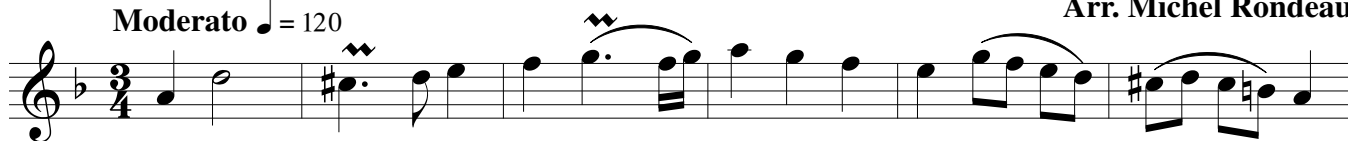
(from: *Musikalische Klavierkunst und Vorratskammer*)
for Trumpet & Organ

Trumpet in C

Johann Heinrich Buttstett (1666 - 1727)

Arr. Michel Rondeau

Moderato ♩ = 120



MENUET 1 in D MINOR

(from: *Musikalische Klavierkunst und Vorratskammer*)
for Trumpet & Organ

Trumpet in D

Johann Heinrich Buttstett (1666 - 1727)

Arr. Michel Rondeau

Moderato ♩ = 120



MENUET 1 in D MINOR

(from: *Musikalische Klavierkunst und Vorratskammer*)

for Trumpet & Organ

Organ

Johann Heinrich Buttstett (1666 - 1727)

Arr. Michel Rondeau

Trumpet in C

Moderato ♩ = 120

Organ

C Tpt.

Org.

C Tpt.

Org.

MENUET 1 in D MINOR - Buttstett - Organ

C Tpt. 

Org. 

C Tpt. 

Org. 

C Tpt. 

Org. 