

Duodecima Sonata

Dario Castello

Alegra

4

9

14

19

24

Adasio

30

34

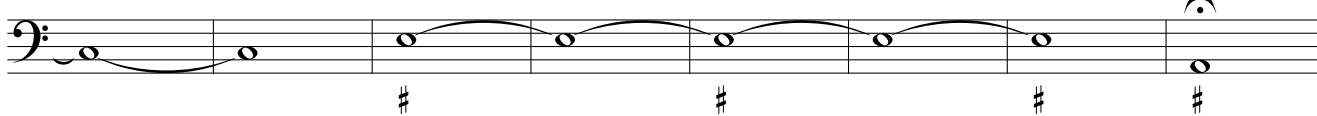
39

46

54



62



Adasio

70



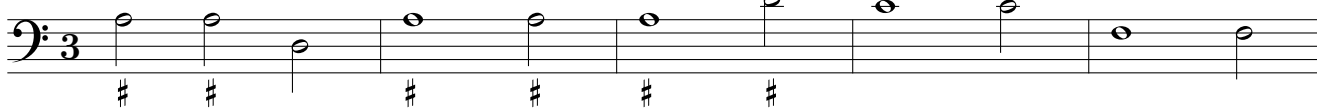
si sona solo il Basso principale sino alla tripola

76

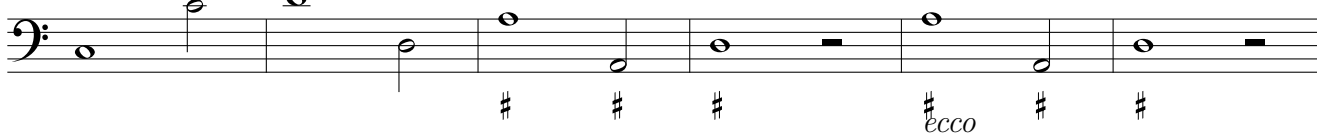


Alegra

83



88



Adasio

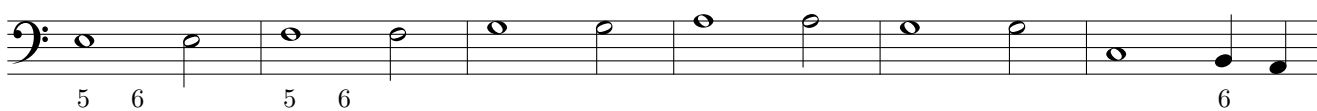
94



100



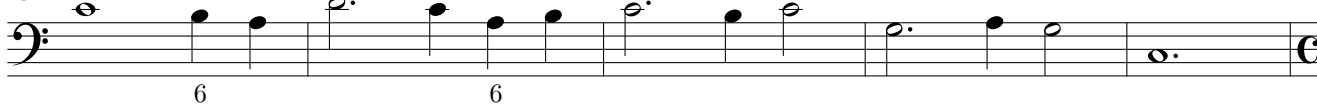
106



112



118



Adasio

123

128

134

Alegria

140

143

148

152

156

161

Adasio

165

Presto

Adasio

171