

TWO MINUETS in D

for Trumpet & Organ

Score (01':40'')

Johann Christoph Friedrich Bach (1732 - 1795)

Arr. Michel Rondeau

1. Minuet - Allegro ♩ = 120

Trumpet in C

Organ

Detailed description: This system contains the first five measures of the piece. The Trumpet in C part is written in a single treble clef staff with a key signature of two sharps (D major) and a 3/4 time signature. It begins with a quarter rest, followed by a series of eighth and quarter notes. The Organ part is written in two staves (treble and bass clefs). The right hand plays chords and moving lines, while the left hand plays a simple bass line. The tempo is marked 'Allegro' with a quarter note equal to 120 beats per minute.

C Tpt.

Org.

Detailed description: This system contains measures 6 through 11. The C Trumpet part has a first ending (marked '1.') and a second ending (marked '2.'). The Organ part continues with its accompaniment. Measure 11 ends with a double bar line and repeat dots.

C Tpt.

Org.

Detailed description: This system contains the final four measures (12-15) of the piece. The C Trumpet part concludes with a trill (tr) on the final note. The Organ part provides a final accompaniment. The piece ends with a double bar line and repeat dots, followed by the word 'Fine'.

2. Minuet - Allegro

18

C Tpt.

Org.

Detailed description: This system covers measures 18 to 23. The C Tpt. part starts with a double bar line and repeat sign at measure 18, followed by rests until measure 21, then a melodic line. The Organ part has a similar structure, with rests in the right hand until measure 21 and a more active accompaniment in the left hand. A fermata is placed over the final note of the organ part in measure 23.

24

C Tpt.

Org.

Detailed description: This system covers measures 24 to 29. The C Tpt. part has a melodic line with a fermata at measure 24, followed by a double bar line and repeat sign, then continues with a melodic line. The Organ part features a steady accompaniment in the left hand and chords in the right hand, with a fermata at the end of measure 29.

30

C Tpt.

Org.

Repeat Minuet 1

Detailed description: This system covers measures 30 to 35. The C Tpt. part has rests until measure 31, then a melodic line with a fermata at measure 34. The Organ part continues with its accompaniment and chords. A double bar line and repeat sign are at the end of measure 35. The text 'Repeat Minuet 1' is written below the organ part.

TWO MINUETS in D

for Trumpet & Organ

Trumpet in C

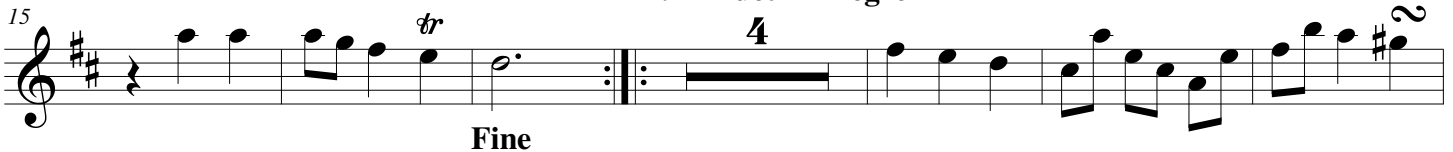
Johann Christoph Friedrich Bach (1732 - 1795)

Arr. Michel Rondeau

1. Minuet - Allegro ♩ = 120



2. Minuet - Allegro



Fine



Repeat Minuet 1

TWO MINUETS in D

for Trumpet & Organ

Trumpet in A

Johann Christoph Friedrich Bach (1732 - 1795)

Arr. Michel Rondeau

1. Minuet - Allegro ♩ = 120

Musical notation for the first minuet, measures 1-7. The key signature is one flat (B-flat), and the time signature is 3/4. The music consists of a series of eighth and sixteenth notes, ending with a fermata and a trill.

Musical notation for the first minuet, measures 8-14. Measure 8 has two first endings (1. and 2.). The music continues with eighth and sixteenth notes, ending with a fermata.

2. Minuet - Allegro

Musical notation for the second minuet, measures 15-24. Measure 15 has a trill (tr) above it. The music features a first ending (1.) and a second ending (2.) with a fermata. The word "Fine" is written below the staff.

Musical notation for the second minuet, measures 25-31. The music continues with eighth and sixteenth notes, ending with a fermata.

Repeat Minuet 1

TWO MINUETS in D

for Trumpet & Organ

Trumpet in D

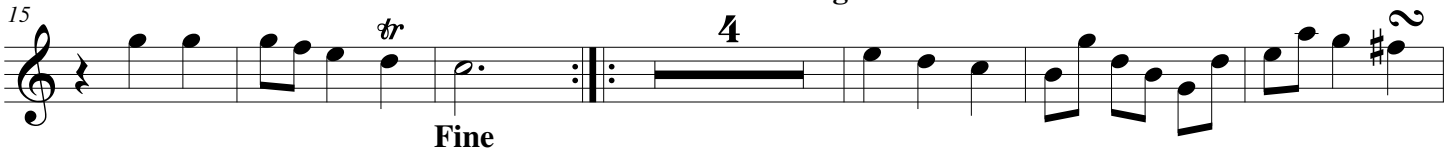
Johann Christoph Friedrich Bach (1732 - 1795)

Arr. Michel Rondeau

1. Minuet - Allegro ♩ = 120



2. Minuet - Allegro



Fine



Repeat Minuet 1

TWO MINUETS in D

for Trumpet & Organ

Organ

Johann Christoph Friedrich Bach (1732 - 1795)

Arr. Michel Rondeau

Trumpet in C

1. Minuet - Allegro ♩ = 120

Organ

C Tpt.

Org.

C Tpt.

Org.

Fine

TWO MINUETS in D - J.C.Bach - Organ

C Tpt. ¹⁸

2. Minuet - Allegro

Org. ¹⁸

C Tpt. ²⁴

Org. ²⁴

C Tpt. ³⁰

Org. ³⁰

Repeat Minuet 1