

SONATE

à 3. 4. e 5.

Con alcune Allemand, Correnti e Balletti

à 3

Innsbruck 1653

William Young

?? – 1662

Published by Johan Tufvesson.

Non-commercial copying welcome

Revision : 1.2

Name	Instr.	Page
Sonata Prima	2vl, viol, bc	4
Sonata Secunda	2vl, viol, bc	5
Sonata Terza	2vl, viol, bc	6
Sonata Quarta	3vl, viol, bc	8
Sonata Quinta	3vl, viol, bc	10
Sonata Sesta	3vl, viol, bc	12
Sonata Settima	3vl, viol, bc	14
Sonata Ottava	3vl, viol, bc	16
Sonata Nona	3vl, viol, bc	18
Sonata Decima	3vl, viol, bc	19
Sonata Undecima	4vl, viol, bc	20
Allemand 1	2vl, viol, bc	22
Allemand 2	2vl, viol, bc	22
Corrente 1	2vl, viol, bc	23
Allemand 3	2vl, viol, bc	23
Corrente 2	2vl, viol, bc	23
Allemand 4	2vl, viol, bc	24
Allemand 5	2vl, viol, bc	24
Corrente 3	2vl, viol, bc	25
Corrente 4	2vl, viol, bc	25
Saraband 1	2vl, viol, bc	25
Corrente 5	2vl, viol, bc	26
Allemand 6	2vl, viol, bc	26
Corrente 6	2vl, viol, bc	27
Saraband 2	2vl, viol, bc	27
Allemand 7	2vl, viol, bc	27
Corrente 7	2vl, viol, bc	28
Balletto	2vl, viol, bc	28
Corrente 8	2vl, viol, bc	28
Corrente 9	2vl, viol, bc	29

Sonata Prima. à 3

William Young
(??-1662)

Canzona

5
10
15
21
27
33
43
49
54
59
64
69
74

p
p

Da Capo

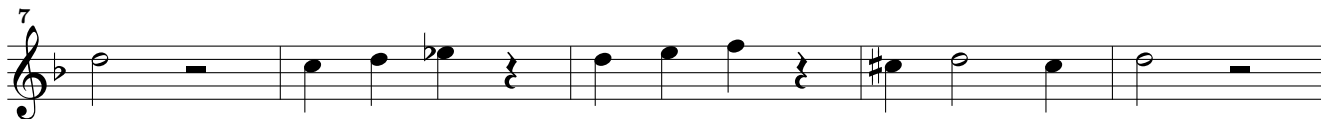
Sonata Secunda. à 3

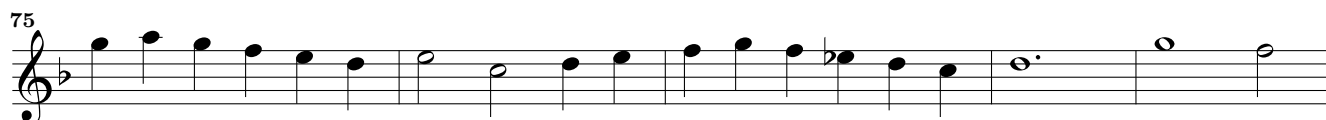
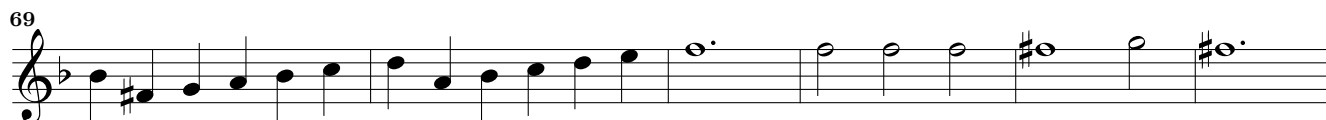
Musical score for Sonata Secunda. à 3, measures 1-44. The score is written in treble clef with a key signature of one flat (B-flat) and a common time signature (C). The piece begins with a series of eighth and sixteenth notes, followed by a section of quarter notes. A 3/4 time signature change occurs at measure 13. The piece concludes with a double bar line and repeat sign at measure 44.

Canzona

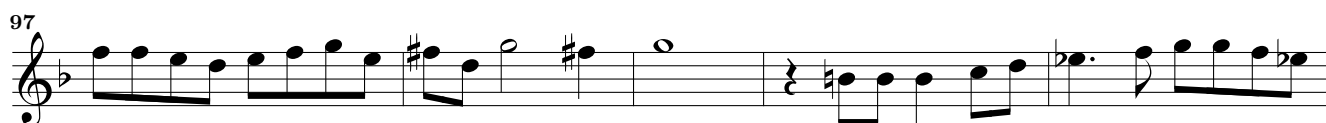
Musical score for Canzona, measures 51-70. The score is written in treble clef with a key signature of one flat (B-flat) and a common time signature (C). The piece begins with a repeat sign and a series of eighth and sixteenth notes. The piece concludes with a double bar line and repeat sign at measure 70.

Sonata Terza. à 3

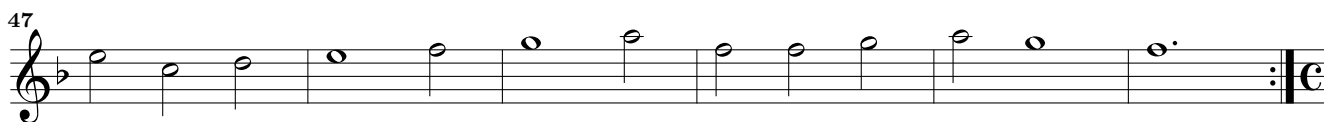
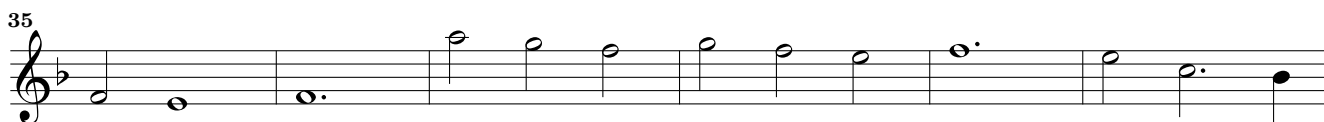
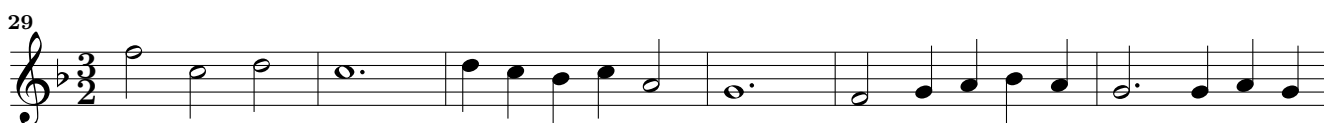
*Allegro*

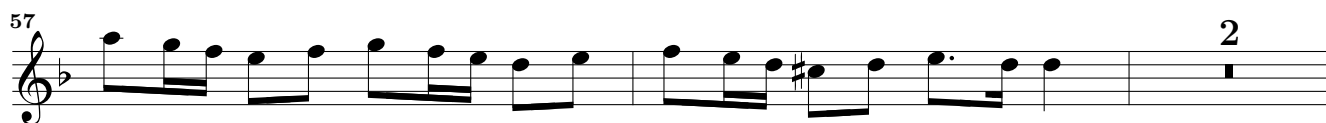
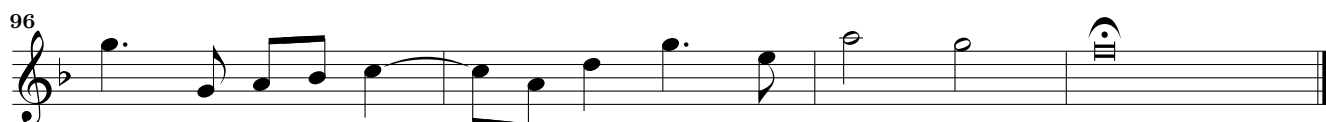
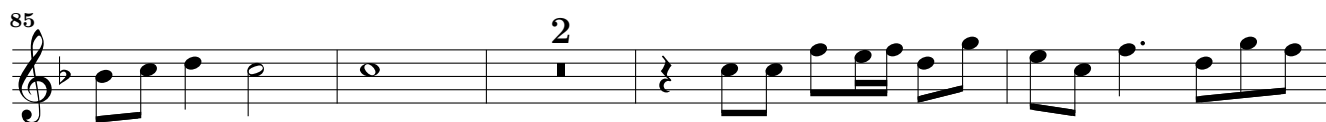


Canzona



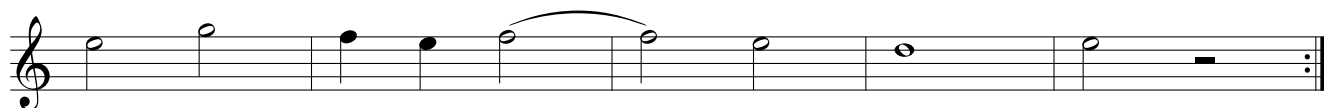
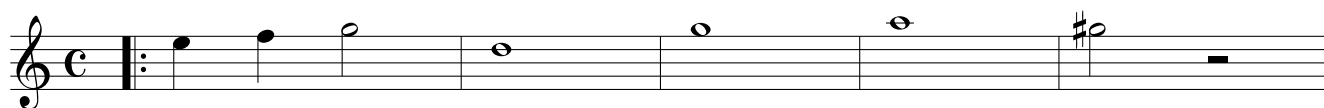
Sonata Quarta. à 4

Adagio*Allegro**Adagio**Allegro*

Allegro*Canzona*

Sonata Quinta. à 4

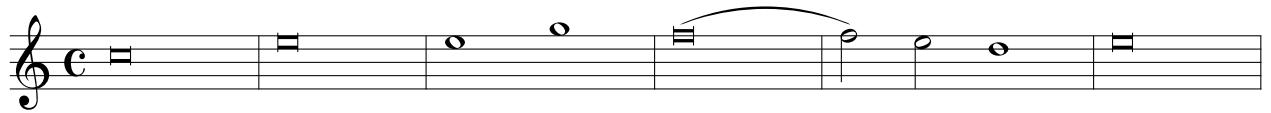
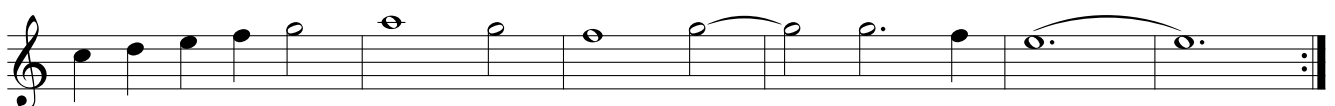
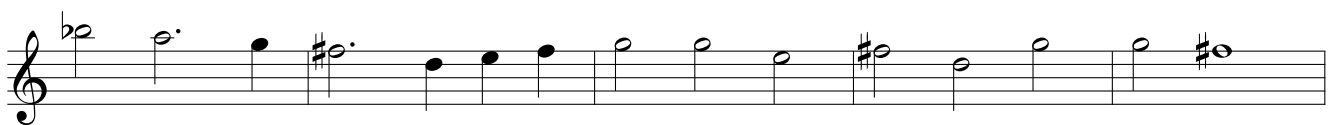
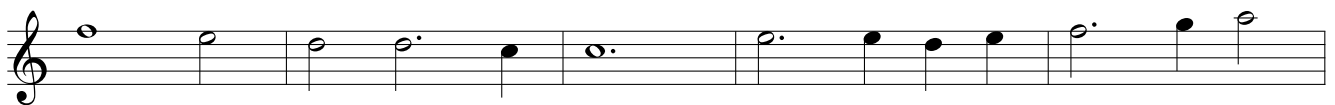
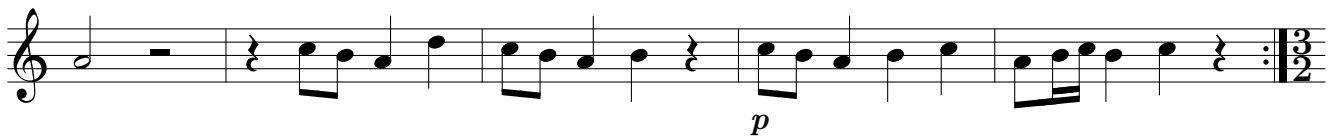
Musical score for Sonata Quinta. à 4, page 10. The score consists of ten staves of music in treble clef, common time (C). The first three staves are in 6/4 time. The fourth staff changes to 6/4 time. The fifth staff changes to 4/4 time. The sixth staff changes to 6/4 time. The seventh staff changes to 4/4 time. The eighth staff changes to 6/4 time. The ninth staff changes to 4/4 time. The tenth staff changes to common time (C). The score includes various musical notations such as notes, rests, accidentals, and dynamics like *p*.



Canzona



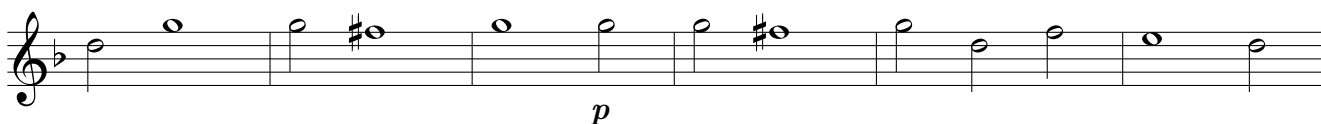
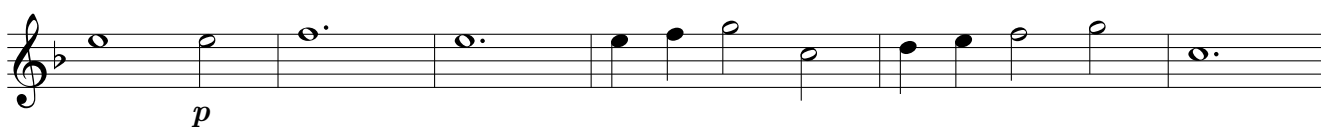
Sonata Sesta. à 4

*Allegro*

p

Canzona

Sonata Settima. à 4

*Allegro*

p

p

p

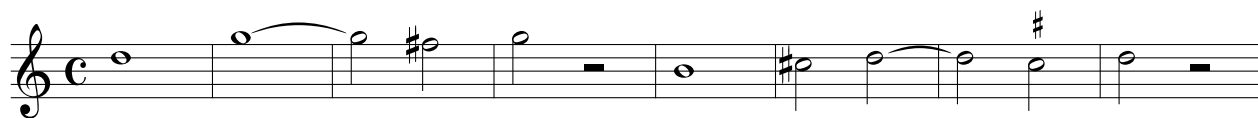
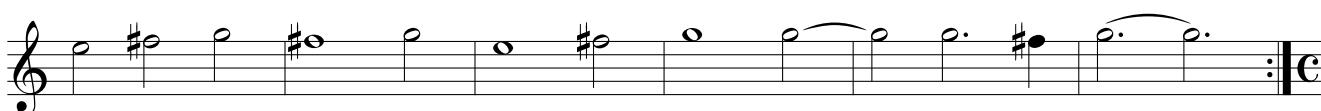
p

p

Canzona

p

Sonata Ottava. à 4

*Allegro*

*Allegro**Canzona*

Sonata Nona. à 4

The first section of the score consists of eight staves of music in common time (C). The first staff begins with a treble clef and a common time signature. The music features a series of eighth and sixteenth notes, with some phrases marked with slurs. The second staff continues the melodic line. The third staff concludes the first phrase with a double bar line and repeat dots. The fourth staff begins a new phrase in 3/2 time, marked with a repeat sign. The fifth and sixth staves continue this phrase. The seventh staff returns to common time, and the eighth staff concludes the section with a double bar line and repeat dots.

Canzona

The Canzona section consists of seven staves of music in common time (C). It begins with a treble clef and a common time signature. The music is characterized by a rhythmic pattern of eighth and sixteenth notes, often grouped in pairs. The first staff starts with a repeat sign. The second and third staves continue the rhythmic pattern. The fourth staff features a phrase with a slur. The fifth and sixth staves continue the rhythmic pattern. The seventh staff concludes the section with a double bar line and repeat dots. A dynamic marking of *p* (piano) is placed below the sixth staff.

Sonata Decima. à 4

Musical score for the first section of Sonata Decima. à 4, measures 1-12. The score is written for four staves in 3/2 time, with a key signature of one flat (B-flat). The music consists of a series of eighth and sixteenth notes, with some rests and a repeat sign at the end of the section.

Allegro

Musical score for the *Allegro* section of Sonata Decima. à 4, measures 13-24. The score is written for four staves in common time (C), with a key signature of one flat. The music features a more rhythmic and melodic style, with many sixteenth and thirty-second notes, and a repeat sign at the end of the section.

Canzona

Musical score for the *Canzona* section of Sonata Decima. à 4, measures 25-36. The score is written for four staves in common time, with a key signature of one flat. The music is characterized by a slower tempo and a more melodic, lyrical style, with many quarter and half notes, and a repeat sign at the end of the section.

Sonata Undecima. à 5

Allegro

Resposte

Musical score for 'Resposte' consisting of six staves. The first staff begins with a treble clef, a common time signature (C), and a repeat sign. The piece features various rhythmic patterns, including eighth and sixteenth notes, and rests. Fingerings are indicated by numbers 1-4 above notes. The score concludes with a double bar line and repeat dots.

Canzona

Musical score for 'Canzona' consisting of seven staves. The first staff begins with a treble clef and a repeat sign. The piece is characterized by a slower tempo and features a mix of quarter, eighth, and sixteenth notes, along with rests. Fingerings are indicated by numbers 1-4 above notes. The score concludes with a double bar line and repeat dots.

Allemand 1.

Musical score for Allemand 1, Violino Primo. The score is written in treble clef, common time (C), and a key signature of one flat (B-flat). It consists of six staves of music. The first staff begins with a 7-measure rest. The piece features a mix of eighth and sixteenth notes, with some triplet markings. The key signature changes to two flats (B-flat and E-flat) in the second staff. The piece concludes with a double bar line and repeat dots.

Allemand 2.

Musical score for Allemand 2, Violino Primo. The score is written in treble clef, common time (C), and a key signature of one flat (B-flat). It consists of eight staves of music. The first staff begins with a 7-measure rest. The piece features a mix of eighth and sixteenth notes, with some triplet markings. The key signature changes to two flats (B-flat and E-flat) in the second staff. The piece concludes with a double bar line and repeat dots.

Corrente 1.

Musical score for *Corrente* 1, measures 1-10. The piece is in 6/4 time and B-flat major. It begins with a half rest followed by a quarter note G4, then a series of eighth notes: A4, Bb4, C5, D5, E5, F5, G5, A5, Bb5, C6. Measure 2 contains a half note G5, a quarter note F5, and a quarter note E5. Measure 3 has a half note D5, a quarter note C5, and a quarter note Bb4. Measure 4 features a half note A4, a quarter note G4, and a quarter note F4. Measure 5 has a half note E4, a quarter note D4, and a quarter note C4. Measure 6 contains a half note B3, a quarter note A3, and a quarter note G3. Measure 7 has a half note F3, a quarter note E3, and a quarter note D3. Measure 8 features a half note C3, a quarter note B2, and a quarter note A2. Measure 9 has a half note G2, a quarter note F2, and a quarter note E2. Measure 10 concludes with a half note D2, a quarter note C2, and a quarter note B1, ending with a double bar line and repeat dots.

Allemand 3.

Musical score for *Allemand* 3, measures 1-3. The piece is in common time (C) and B-flat major. Measure 1 starts with a quarter note G4, followed by eighth notes A4, Bb4, C5, D5, E5, F5, G5, A5, Bb5, C6. Measure 2 contains a quarter note G5, a quarter note F5, a quarter note E5, a quarter note D5, a quarter note C5, a quarter note Bb4, a quarter note A4, and a quarter note G4. Measure 3 has a quarter note F4, a quarter note E4, a quarter note D4, a quarter note C4, a quarter note Bb3, a quarter note A3, a quarter note G3, and a quarter note F3. Measure 4 features a quarter note E3, a quarter note D3, a quarter note C3, a quarter note Bb2, a quarter note A2, a quarter note G2, and a quarter note F2. Measure 5 has a quarter note E2, a quarter note D2, a quarter note C2, a quarter note Bb1, a quarter note A1, a quarter note G1, and a quarter note F1. Measure 6 contains a quarter note E1, a quarter note D1, a quarter note C1, a quarter note Bb0, a quarter note A0, a quarter note G0, and a quarter note F0. Measure 7 has a quarter note E0, a quarter note D0, a quarter note C0, a quarter note Bb-1, a quarter note A-1, a quarter note G-1, and a quarter note F-1. Measure 8 features a quarter note E-1, a quarter note D-1, a quarter note C-1, a quarter note Bb-2, a quarter note A-2, a quarter note G-2, and a quarter note F-2. Measure 9 has a quarter note E-2, a quarter note D-2, a quarter note C-2, a quarter note Bb-3, a quarter note A-3, a quarter note G-3, and a quarter note F-3. Measure 10 concludes with a quarter note E-3, a quarter note D-3, a quarter note C-3, a quarter note Bb-4, a quarter note A-4, a quarter note G-4, and a quarter note F-4, ending with a double bar line and repeat dots.

Corrente 2.

Musical score for *Corrente* 2, measures 1-4. The piece is in 6/4 time and B-flat major. Measure 1 starts with a half note G4, followed by quarter notes A4, Bb4, C5, D5, E5, F5, G5, A5, Bb5, C6. Measure 2 contains a half note G5, a quarter note F5, a quarter note E5, a quarter note D5, a quarter note C5, a quarter note Bb4, a quarter note A4, and a quarter note G4. Measure 3 has a quarter note F4, a quarter note E4, a quarter note D4, a quarter note C4, a quarter note Bb3, a quarter note A3, a quarter note G3, and a quarter note F3. Measure 4 features a quarter note E3, a quarter note D3, a quarter note C3, a quarter note Bb2, a quarter note A2, a quarter note G2, and a quarter note F2. Measure 5 has a quarter note E2, a quarter note D2, a quarter note C2, a quarter note Bb1, a quarter note A1, a quarter note G1, and a quarter note F1. Measure 6 contains a quarter note E1, a quarter note D1, a quarter note C1, a quarter note Bb0, a quarter note A0, a quarter note G0, and a quarter note F0. Measure 7 has a quarter note E0, a quarter note D0, a quarter note C0, a quarter note Bb-1, a quarter note A-1, a quarter note G-1, and a quarter note F-1. Measure 8 features a quarter note E-1, a quarter note D-1, a quarter note C-1, a quarter note Bb-2, a quarter note A-2, a quarter note G-2, and a quarter note F-2. Measure 9 has a quarter note E-2, a quarter note D-2, a quarter note C-2, a quarter note Bb-3, a quarter note A-3, a quarter note G-3, and a quarter note F-3. Measure 10 concludes with a quarter note E-3, a quarter note D-3, a quarter note C-3, a quarter note Bb-4, a quarter note A-4, a quarter note G-4, and a quarter note F-4, ending with a double bar line and repeat dots.

Allemand 4.

Musical score for Allemand 4, measures 1-16. The piece is in 3/4 time and B-flat major. It begins with a treble clef and a common time signature. The melody starts with a quarter rest, followed by a quarter note B-flat, a quarter note A, and a quarter note G. The piece concludes with a double bar line and repeat dots.

Allemand 5.

Musical score for Allemand 5, measures 1-16. The piece is in 3/4 time and B-flat major. It begins with a treble clef and a common time signature. The melody starts with a quarter rest, followed by a quarter note B-flat, a quarter note A, and a quarter note G. The piece concludes with a double bar line and repeat dots.

Corrente 3.
Corrente 4.
Saraband 1.

Corrente 5.

2

b?

Allemand 6.

b?

Corrente 6.

Musical score for *Corrente 6.* in G minor, 6/4 time. The score consists of four staves of music. The first staff begins with a treble clef, a key signature of one flat (B-flat), and a 6/4 time signature. The melody features a mix of eighth and sixteenth notes, with some rests. The second staff continues the melody with a repeat sign at the end. The third staff has a repeat sign at the beginning. The fourth staff concludes the piece with a double bar line and repeat dots.

Saraband 2.

Musical score for *Saraband 2.* in G minor, 6/4 time. The score consists of four staves of music. The first staff begins with a treble clef, a key signature of one flat (B-flat), and a 6/4 time signature. The melody is characterized by a slow, steady eighth-note pattern. The second staff includes a repeat sign. The third staff continues the eighth-note pattern. The fourth staff concludes the piece with a double bar line and repeat dots.

Allemand 7.

Musical score for *Allemand 7.* in G minor, common time (C). The score consists of five staves of music. The first staff begins with a treble clef, a key signature of one flat (B-flat), and a common time signature. The melody features a mix of eighth and sixteenth notes. The second staff includes a repeat sign. The third staff continues the melody with a repeat sign. The fourth staff concludes the piece with a double bar line and repeat dots.

Corrente 7.

Musical score for Corrente 7, measures 1-16. The piece is in 6/4 time and B-flat major. It consists of four staves of music. The first staff begins with a treble clef, a key signature of one flat, and a 6/4 time signature. The melody starts on a half note G4, followed by quarter notes A4, Bb4, and C5. The second staff continues the melody with quarter notes D5, E5, F5, and G5. The third staff features a repeat sign and continues the melody with quarter notes A5, Bb5, C6, and D6. The fourth staff concludes the piece with quarter notes E6, F6, G6, and A6, ending with a double bar line and repeat dots.

Balletto

Musical score for Balletto, measures 1-16. The piece is in 6/4 time and B-flat major. It consists of seven staves of music. The first staff begins with a treble clef, a key signature of one flat, and a 6/4 time signature. The melody starts on a half note G4, followed by quarter notes A4, Bb4, and C5. The second staff continues the melody with quarter notes D5, E5, F5, and G5. The third staff features a repeat sign and continues the melody with quarter notes A5, Bb5, C6, and D6. The fourth staff continues the melody with quarter notes E6, F6, G6, and A6. The fifth staff continues the melody with quarter notes Bb6, C7, D7, and E7. The sixth staff continues the melody with quarter notes F7, G7, A7, and Bb7. The seventh staff concludes the piece with quarter notes C8, D8, E8, and F8, ending with a double bar line and repeat dots.

Corrente 8.

Musical score for Corrente 8, measures 1-8. The piece is in 6/4 time and B-flat major. It consists of two staves of music. The first staff begins with a treble clef, a key signature of one flat, and a 6/4 time signature. The melody starts on a half note G4, followed by quarter notes A4, Bb4, and C5. The second staff continues the melody with quarter notes D5, E5, F5, and G5. The third staff features a repeat sign and continues the melody with quarter notes A5, Bb5, C6, and D6. The fourth staff continues the melody with quarter notes E6, F6, G6, and A6. The fifth staff continues the melody with quarter notes Bb6, C7, D7, and E7. The sixth staff continues the melody with quarter notes F7, G7, A7, and Bb7. The seventh staff continues the melody with quarter notes C8, D8, E8, and F8. The eighth staff concludes the piece with quarter notes G8, A8, Bb8, and C9, ending with a double bar line and repeat dots.

Corrente 9.

The image shows the musical score for 'Corrente 9' in G major and 6/4 time. It consists of three staves of music. The first staff begins with a treble clef, a key signature of one sharp (F#), and a 6/4 time signature. The melody starts with a half note G4, followed by quarter notes A4, B4, C5, B4, A4, and G4. The second staff continues the melody with quarter notes G4, A4, B4, C5, B4, A4, and G4, followed by a repeat sign and a double bar line. The third staff concludes the piece with quarter notes G4, A4, B4, C5, B4, A4, and G4, ending with a double bar line and repeat dots.