

Sonate pour un hauboïs avec la basse.

1. Prelude

Antoine Dornel
Edited by Gil Garty

Continuo



5



11



17



23



28



2. Fugue

Continuo



5



10



14



19



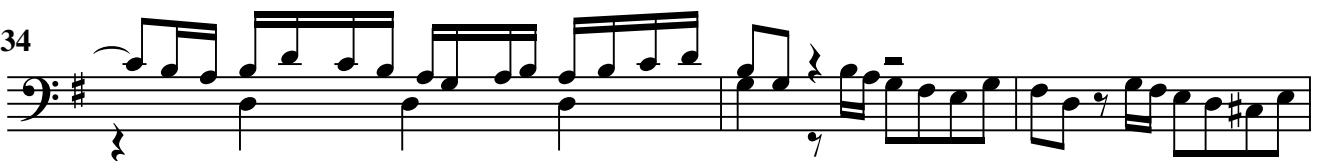
24



29



34



37



41



45



3. Gravement

Continuo

8

15

Detailed description of the musical score: The score is for a Continuo instrument in 3/4 time and the key of D major (one sharp). It consists of three staves of music. The first staff begins at measure 1 with a quarter rest, followed by a series of eighth and quarter notes: D4, E4, F#4, G4, A4, B4, C5, B4, A4, G4, F#4, E4, D4. The second staff starts at measure 8 with a quarter rest, followed by: D4, E4, F#4, G4, A4, B4, C5, B4, A4, G4, F#4, E4, D4. The third staff starts at measure 15 with a quarter rest, followed by: D4, E4, F#4, G4, A4, B4, C5, B4, A4, G4, F#4, E4, D4. The piece concludes with a double bar line at the end of the third staff.

4. Gigue

Continuo

6

12

18

24

30

34

Fin.