

SONATA in G (Op.1, No.3)

for Trumpet & Organ

Score (05':10")

Gottfried Finger (ca.1660 - 1730)

Arr. Michel Rondeau

1. Adagio ♩ = 65

Trumpet in C

Organ

This system shows the first four measures of the piece. The Trumpet in C part is in the treble clef with a key signature of one sharp (F#) and a 4/4 time signature. The Organ part consists of two staves, treble and bass clef, with the same key signature and time signature. The organ accompaniment features a steady bass line and a treble line with chords and moving lines.

C Tpt.

Org.

This system covers measures 5 through 9. The C Trumpet part begins with a rest in measure 5 and then plays a melodic line. The Organ part continues with its accompaniment, including a trill (tr) in the treble staff at measure 5.

C Tpt.

Org.

This system covers measures 10 through 14. The C Trumpet part continues its melodic line. The Organ part provides accompaniment with chords and moving lines in both staves.

C Tpt.

Org.

This system covers measures 15 through 18. The C Trumpet part has a trill (tr) in measure 15 and then rests. The Organ part continues with its accompaniment.

SONATA in G (Op.1, No.3) - Finger - Score

19 **Allegro**

C Tpt.

Org.

Detailed description: This system covers measures 19 to 21. The C Tpt. part begins with a treble clef, a key signature of one sharp (F#), and a 7/8 time signature. It features a melodic line with eighth and sixteenth notes. The Organ part is in a grand staff (treble and bass clefs) with the same key signature. It provides a rhythmic accompaniment with eighth notes in the bass and rests in the treble.

C Tpt.

Org.

Detailed description: This system covers measures 22 to 24. The C Tpt. part continues with a melodic line, including some rests. The Organ part features a more active accompaniment with sixteenth-note patterns in both the treble and bass staves.

C Tpt.

Org.

Detailed description: This system covers measures 25 to 27. The C Tpt. part has a melodic line with some rests. The Organ part continues with a rhythmic accompaniment, featuring a mix of eighth and sixteenth notes.

C Tpt.

Org.

Detailed description: This system covers measures 28 to 30. The C Tpt. part features a melodic line with eighth notes. The Organ part provides a rhythmic accompaniment with eighth notes in the bass and sixteenth notes in the treble.

SONATA in G (Op.1, No.3) - Finger - Score

30

C Tpt.

Org.

30

31

32

33

C Tpt.

Org.

33

34

35

C Tpt.

Org.

35

36

37

38

C Tpt.

Org.

38

39

40

41

C Tpt.

Org.

45

C Tpt.

Org.

47

C Tpt.

Org.

50

C Tpt.

Org.

53 **2. Adagio**

C Tpt.

Org.

57

C Tpt.

Org.

61

C Tpt.

Org.

66 **3. Allegro**

C Tpt.

Org.

C Tpt.

Org.

72

C Tpt.

Org.

78

C Tpt.

Org.

83

C Tpt.

Org.

87

SONATA in G (Op.1, No.3) - Finger - Score

90

C Tpt.

Org.

90

91

92

93

94

95

C Tpt.

Org.

95

96

97

98

99

100

101

102

C Tpt.

Org.

102

103

104

105

106

107

108

4. Adagio

C Tpt.

Org.

108

109

110

111

112

113

SONATA in G (Op.1, No.3)

for Trumpet & Organ

Organ

Gottfried Finger (ca.1660 - 1730)

Arr. Michel Rondeau

Trumpet in C

1. Adagio ♩ = 65

Organ

C Tpt.

5

5

Org.

C Tpt.

10

10

Org.

C Tpt.

15

15

Org.

SONATA in G (Op.1, No.3) - Finger - Organ

C Tpt.

19

Org.

Allegro

19

Detailed description: This system covers measures 19 to 21. The C Tpt. part (top staff) begins with a treble clef, a key signature of one sharp (F#), and a 7/8 time signature. It features a melodic line with eighth and sixteenth notes. The Organ part (bottom two staves) starts with a treble clef, a key signature of one sharp, and a common time signature. The word 'Allegro' is written above the first staff. The organ part has a more rhythmic accompaniment with eighth and sixteenth notes.

C Tpt.

22

Org.

22

Detailed description: This system covers measures 22 to 24. The C Tpt. part continues with a melodic line. The Organ part features a more complex texture with sixteenth-note patterns in the right hand and a steady eighth-note accompaniment in the left hand.

C Tpt.

25

Org.

25

Detailed description: This system covers measures 25 to 27. The C Tpt. part has a melodic line with some rests. The Organ part continues with its rhythmic accompaniment, showing some chordal textures in the right hand.

C Tpt.

28

Org.

28

Detailed description: This system covers measures 28 to 30. The C Tpt. part concludes with a melodic line ending in a fermata. The Organ part continues with its accompaniment, ending with a final cadence.

SONATA in G (Op.1, No.3) - Finger - Organ

C Tpt.

Org.

30

C Tpt.

Org.

33

C Tpt.

Org.

35

C Tpt.

Org.

38

SONATA in G (Op.1, No.3) - Finger - Organ

C Tpt.

Org.

41

41

C Tpt.

Org.

45

45

C Tpt.

Org.

47

47

C Tpt.

Org.

50

50

SONATA in G (Op.1, No.3) - Finger - Organ

53

C Tpt.

Org.

2. Adagio

57

C Tpt.

Org.

61

C Tpt.

Org.

66

C Tpt.

Org.

3. Allegro

SONATA in G (Op.1, No.3) - Finger - Organ

C Tpt.

Org.

72

C Tpt.

Org.

78

C Tpt.

Org.

83

C Tpt.

Org.

87

SONATA in G (Op.1, No.3) - Finger - Organ

C Tpt.

Org.

C Tpt.

Org.

C Tpt.

Org.

C Tpt.

Org.

4. Adagio

SONATA in G (Op.1, No.3)

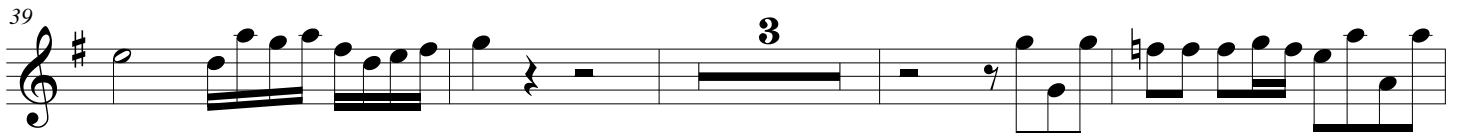
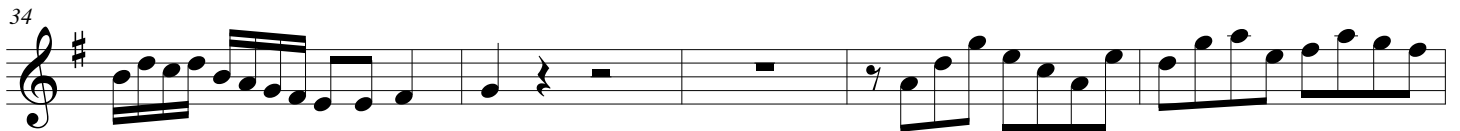
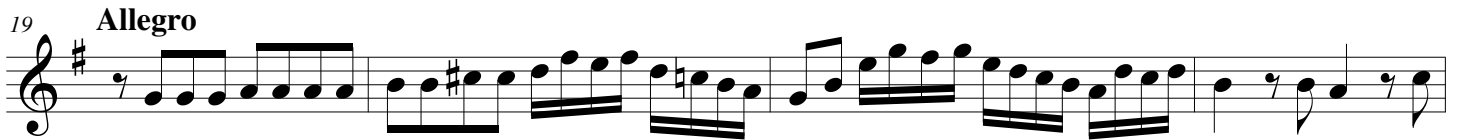
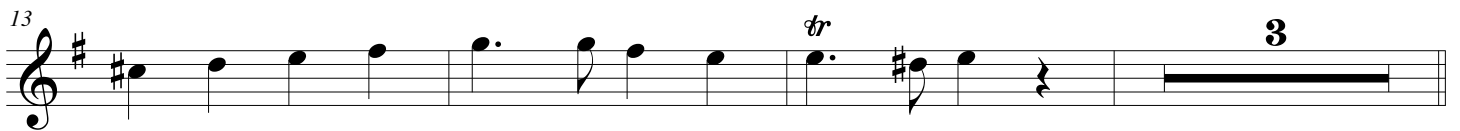
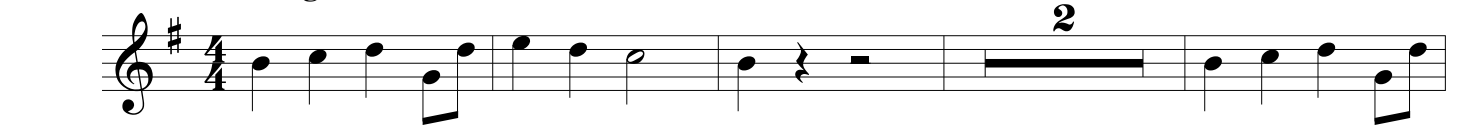
C Trumpet

for Trumpet & Organ

Gottfried Finger (ca.1660 - 1730)

Arr. Michel Rondeau

1. Adagio ♩ = 65



SONATA in G (Op.1, No.3) - Finger - C Trumpet

49

53 **2. Adagio**

60

66 **3. Allegro**

73

80

88

92

99

108

4. Adagio

SONATA in G (Op.1, No.3)

A Trumpet

for Trumpet & Organ

Gottfried Finger (ca.1660 - 1730)

Arr. Michel Rondeau

1. Adagio ♩ = 65

7

13 *tr*

19 **Allegro**

23

27

31

34

39

46

SONATA in G (Op.1, No.3) - Finger - A Trumpet

49

53 2. Adagio

60

66 3. Allegro

73

80

88

92

99

108

4. Adagio