

Graupner, Christoph (1683-1760)

BRD DS Mus.ms 470/44,II

Ab 1751./Sinfonia.D. ./a/2 Corn./Tymp.G.A.H.D./2 Flaut:  
Trav./2 Violin/Viola/e/Cembalo/Christoph Graupner./[Inci-  
pit]/ (D-dur)

Ms.1751 (Endler). 34,5 x 24,5 cm.

10 St.:vl 1,2,vla,b,vlne,fl 1,2,cor 1,2,timp.  
2,2,2,1,2,2,2,1,1,1 Bl.

Incipit vgl.Autograph Mus.ms 470/44,I. - Nagel Nr.73.

73/4

Neus 3094/  
470/44 (Nagel 73)  
D. #.

1.

1747 - Juni 50.

# Sinfonia.

2. Corni,  
Tympani. J. A. H. D.

2. Flauti traversi,

2. Violini,

Viola,  
et  
Basso.

di  
Straupner.

Foll. (18).

(Kopie von No 73)  
ohne Partitur.



7

Sinfonia

Corno. 1.

D.

*allegro*

Tempo di Sarabande

*piano*

Air *allegro*

Tempo di Loure

*Tempo*  
*Loure*

*Mennet*

*Air*  
*en*  
*Gavotte*

Sinfonia D. Corno 2.

allegro

Tempo di Tarabande

Air

allegro

Tempo di Loure

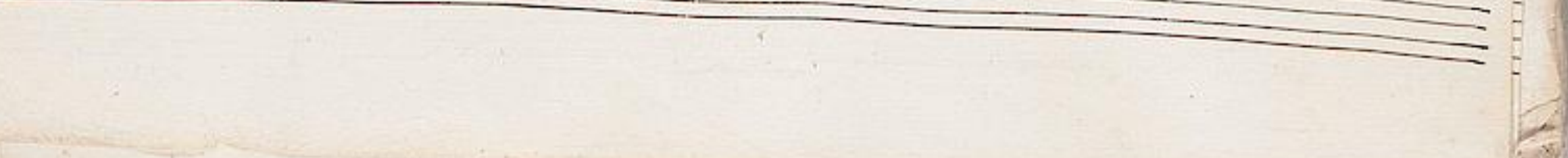
*Tempo*  
*di*  
*Loure*



*Menuet*



*Air*  
*en*  
*Gavotte*



Sinfonia

Tympani.

G. A. H. D. 4

Handwritten musical score for the first section of the symphony, featuring ten staves of music. The notation includes various dynamics such as *p.*, *f.*, and *pp*, and includes first and second endings. The music is written in a common time signature.

Section titled *Tempo di Sarabande*, consisting of two staves of music. The time signature changes to 3/4. The notation includes first and second endings.

Section titled *Air allegro*, consisting of four staves of music. The time signature is common time. The notation includes first and second endings and dynamic markings like *p.* and *pian.*

Tempo di Loure

*Tempo di Course*

1. 1. 2. 3. 1.

*Menuet*

1. 2. 1. 2.

2. 1. p.

*Air en Gavotte*

3. 4. 3. 3.

2. 3. 2.

7. 1. 2.



Handwritten musical notation on a page with ten staves. The notation consists of rhythmic patterns of dots and short horizontal lines, characteristic of early manuscript notation. The notes are arranged in a series of wavy lines across the staves, suggesting a melodic or rhythmic sequence. The ink is dark brown or black, and the paper is aged and slightly yellowed.

Sinfonia

Flauto Trav. 1.

Handwritten musical score for Flauto Trav. 1. The score is written on 15 staves in G major (one sharp) and 3/4 time. The tempo is marked *allegro*. The score includes various dynamic markings such as *p*, *f*, *sost.*, and *sostent.* The notation features complex rhythmic patterns, including sixteenth and thirty-second notes, and rests. The piece concludes with a final cadence on the fifteenth staff.

Musical staff with treble clef, key signature of one sharp (F#), and 2/4 time signature. The notation includes a dynamic marking of *f* and a hairpin crescendo.

Musical staff with treble clef, key signature of one sharp (F#), and 2/4 time signature. The notation includes a dynamic marking of *f* and a hairpin crescendo.

Musical staff with treble clef, key signature of one sharp (F#), and 3/4 time signature. The tempo marking is *Tempo di Tarabande*.

Musical staff with treble clef, key signature of one sharp (F#), and 3/4 time signature. The notation includes various rhythmic values and accidentals.

Musical staff with treble clef, key signature of one sharp (F#), and 3/4 time signature. The notation includes various rhythmic values and accidentals.

Musical staff with treble clef, key signature of one sharp (F#), and 3/4 time signature. The tempo marking is *Allegro*. The notation includes various rhythmic values and accidentals.

Musical staff with treble clef, key signature of one sharp (F#), and 3/4 time signature. The notation includes various rhythmic values and accidentals.

Musical staff with treble clef, key signature of one sharp (F#), and 3/4 time signature. The notation includes various rhythmic values and accidentals.

Musical staff with treble clef, key signature of one sharp (F#), and 3/4 time signature. The notation includes various rhythmic values and accidentals.

Musical staff with treble clef, key signature of one sharp (F#), and 3/4 time signature. The notation includes various rhythmic values and accidentals.

Musical staff with treble clef, key signature of one sharp (F#), and 3/4 time signature. The notation includes various rhythmic values and accidentals.

Musical staff with treble clef, key signature of one sharp (F#), and 3/4 time signature. The notation includes various rhythmic values and accidentals.

Musical staff with treble clef, key signature of one sharp (F#), and 3/4 time signature. The notation includes various rhythmic values and accidentals.

Musical staff with treble clef, key signature of one sharp (F#), and 3/4 time signature. The notation includes various rhythmic values and accidentals. The tempo marking *Tempo di Loure* is written at the end of the staff.

Two empty musical staves at the bottom of the page.

*Tempo*  
*di*

*Clave*

*Musiel*

*Air en Gavotte*

*[Faint, mostly illegible handwritten text, possibly musical notation or a list, covering the majority of the page.]*

Sinfonia

Flauto, Trav. 2

Handwritten musical score for Flute, Part 2 of a Symphony. The score is written on 15 staves in G major (one sharp) and 2/4 time. The tempo is marked "Allegro." The music features various dynamics including *p.* (piano), *f.* (forte), *sost.* (sostenuto), and *mf.* (mezzo-forte). The notation includes eighth and sixteenth notes, rests, and slurs. The manuscript shows signs of age, with some ink bleed-through from the reverse side of the page.



Handwritten musical notation on a single staff, featuring a treble clef, a key signature of one sharp (F#), and a common time signature (C). The notation includes various rhythmic values and rests.

Handwritten musical notation on a single staff, continuing the piece with similar notation and a double bar line at the end.

Section header: *Tempo di Sarabande*. The notation is in 3/4 time, with a treble clef and a key signature of one sharp (F#).

Handwritten musical notation on a single staff for the Sarabande section.

Handwritten musical notation on a single staff for the Sarabande section, ending with a double bar line.

Section header: *Air*. The notation is in common time (C), with a treble clef and a key signature of one sharp (F#).

*allegro*

Handwritten musical notation on a single staff for the Air section.

Handwritten musical notation on a single staff for the Air section.

Handwritten musical notation on a single staff for the Air section.

Handwritten musical notation on a single staff for the Air section.

Handwritten musical notation on a single staff for the Air section.

Handwritten musical notation on a single staff for the Air section.

Handwritten musical notation on a single staff for the Air section, ending with a double bar line and the instruction *Tempo di Loure*.

*Tempo*  
*Course*

*Menuet*

*Air*  
*en*  
*Garotte*





Sinfonia

Violino 1.

Handwritten musical score for Violino 1, titled "Sinfonia". The score is written on 18 staves, each with a treble clef and a key signature of one sharp (F#). The tempo is marked "allegro". The music features various dynamics including *pp*, *p*, *f*, *fortif.*, and *sost.*. The notation includes eighth and sixteenth notes, rests, and slurs. The score is written in a cursive, handwritten style.



*fortissimo*

*pp* *fortissimo*

*Tempo* *Lordin*  
*Sarabande*

*dir* *allegro*

*p.* *sost.*

*Tempo di Loure*

*Tempo*  
*di*  
*Loare*

*Menuet*

*Sostent*  
*piano*

*Air*  
*en*  
*Gavotte*

*[Faint, mostly illegible handwritten text, possibly a list or account, covering the majority of the page.]*

Sinfonia

Violino 2.

Handwritten musical score for Violino 2, Sinfonia. The score is written on 18 staves in G major (one sharp) and 3/4 time. The tempo is marked *Allegro*. The score includes dynamic markings such as *p* (piano), *f* (forte), and *pp* (pianissimo). The notation features various rhythmic values, including eighth and sixteenth notes, and rests. The piece concludes with a final cadence on the 18th staff.

Handwritten musical notation for the first system, consisting of four staves with treble clefs and a key signature of one sharp (F#). The notation includes various rhythmic values and dynamic markings.

*Tempo di Loure*

*Sarabande*

Handwritten musical notation for the second system, consisting of four staves with treble clefs and a key signature of one sharp (F#). The notation includes various rhythmic values and dynamic markings.

*Air*

*allegro*

*piano*

Handwritten musical notation for the third system, consisting of ten staves with treble clefs and a key signature of one sharp (F#). The notation includes various rhythmic values and dynamic markings.

*Tempo di Loure*

Handwritten musical notation for the fourth system, consisting of one staff with treble clef and a key signature of one sharp (F#).

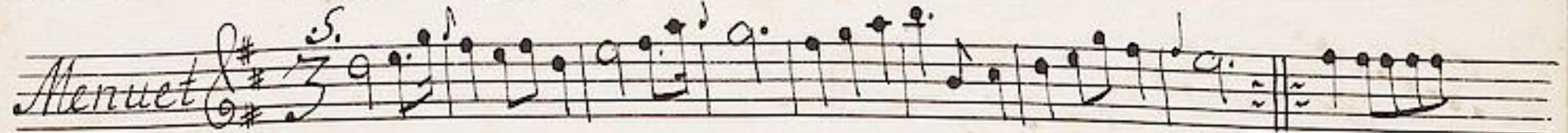
*Tempo*  
*di*  
*Loure*



*sord.*



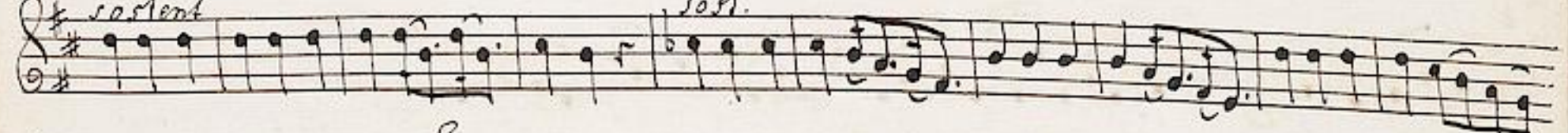
*Menuet*



*piano*



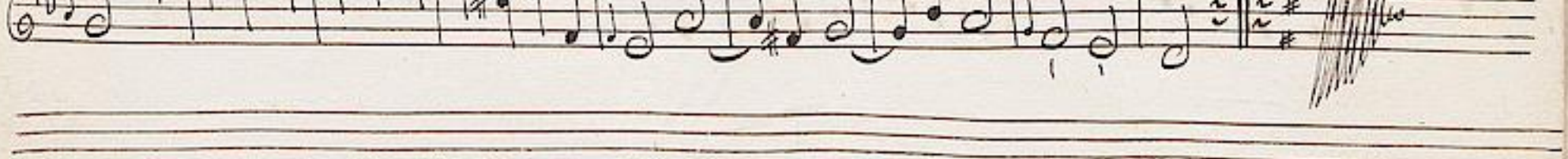
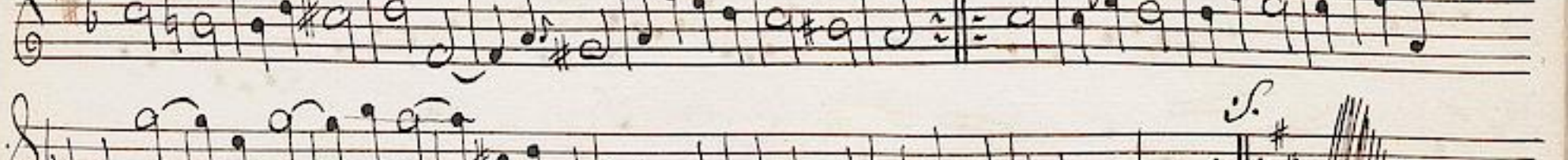
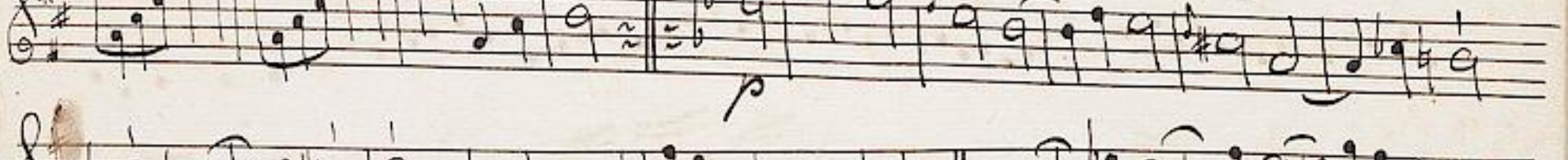
*sestent* *sord.*



*p.*



*Air*  
*en*  
*Gavotte*





*[Faint, mostly illegible handwritten text, possibly musical notation or a list, covering the majority of the page.]*

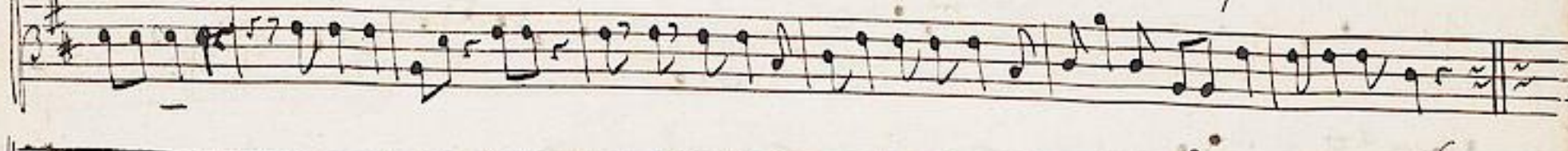
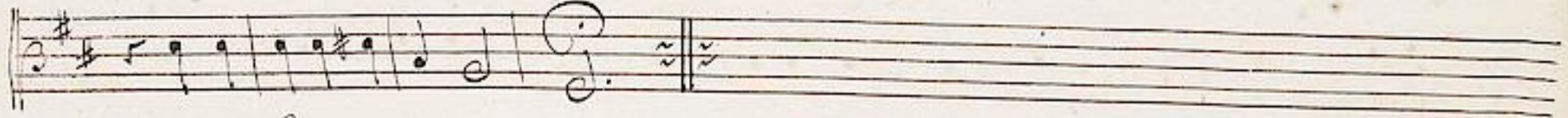
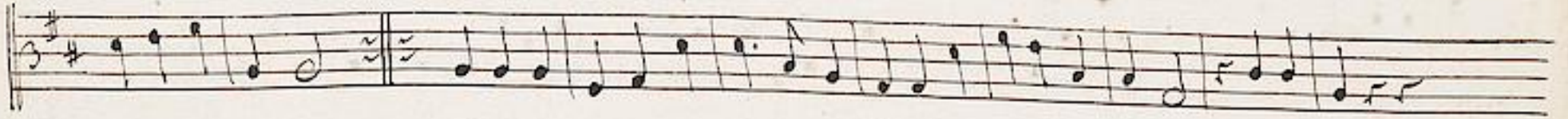
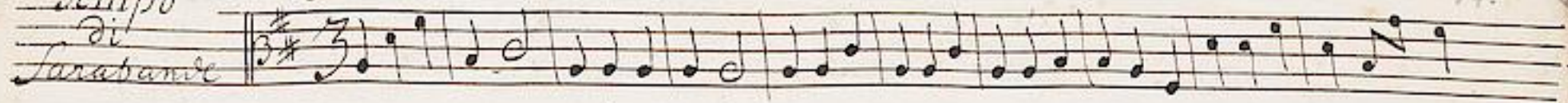
Sinfonia

Viola

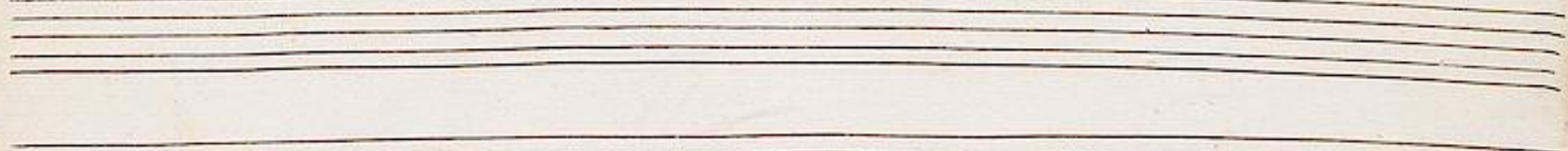
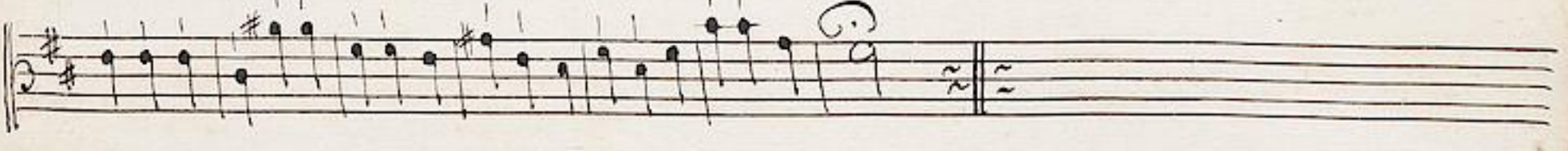
Handwritten musical score for Viola, Sinfonia, Allegro. The score consists of 15 staves of music. The key signature is one sharp (F#) and the time signature is 3/4. The tempo is marked 'allegro'. The score includes various dynamics such as *p.* (piano), *f.* (forte), and *fz.* (forzando). The music features complex rhythmic patterns, including sixteenth and thirty-second notes, and rests. The notation is in a cursive, handwritten style.

Tempo di  
Sarabande

Sordin.



Tempo di  
Loure



*Menuet* *f.*  $\text{3/4}$

*Air en Gavotte* *f.*  $\text{C}$

Basso.

Allegro.

Handwritten musical score for Bass, Allegro tempo. The score consists of ten staves of music in treble clef with a key signature of one sharp (F#). The notation includes various rhythmic values, slurs, and dynamic markings such as 'p' and 'f'. The piece concludes with a double bar line and a final chord.

Tempo

Sarabande

Handwritten musical score for Bass, Tempo Sarabande. The score consists of two staves of music in treble clef with a key signature of one sharp (F#) and a 4/4 time signature. The notation includes various rhythmic values and dynamic markings such as 'p'.

Pis.

Air

*Alegro*

Menuet

Air Gavotte

Da Capo

Ms. 1751.

Sinfonia. D. #.

a

2 Corn.

Tymp. G. A. H. D.

2 Flaut: Trav.

2 Violin

Viola

e

Cembalo

Christoph Graupner?



Sinfonia

Violone

Handwritten musical score for Violone, titled "Sinfonia". The score is written on 14 staves in a single system. The tempo is marked "Allegro". The key signature is one sharp (F#) and the time signature is common time (C). The notation includes various rhythmic values, dynamics (p, f), and articulation marks. The piece concludes with a double bar line and a final measure.





*Tempo*  
*di*  
 Sarabande *ppp.*

*di*  
 Allegro - *fort.*

*Tempo*  
*di*  
 Loure

*Manuel*

*Menuet* *S.*  $\text{C}\sharp$   $\text{C}$   $\text{3}$

*piano*

*Air en Gavotte* *S.*  $\text{C}\sharp$   $\text{C}$

*piano*