

# Suite 3

for Brass Quartet

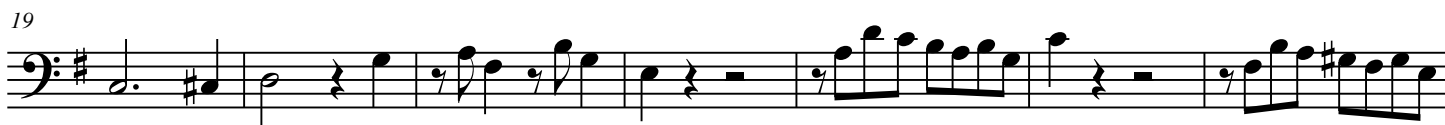
## Bass Trombone

Moderato ♩ = 100

### I - Preludio

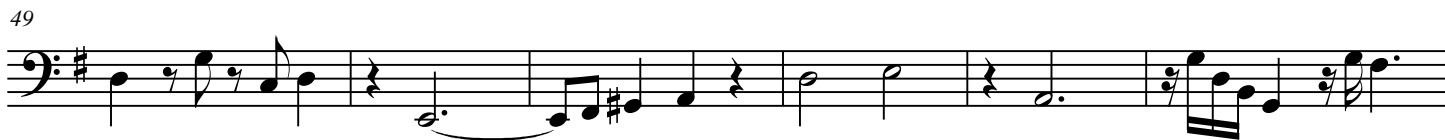
Pieter Bustijn (1649-1729)

Arr. Michel Rondeau



### II-Allemande

33 Moderato



Moderato

III - Corrente

Musical staff for Corrente, measures 1-65. The staff is in bass clef with a key signature of one sharp (F#) and a 6/8 time signature. It begins with a repeat sign and contains various rhythmic patterns including eighth and sixteenth notes.

Musical staff for Corrente, measures 66-73. It includes first and second endings, indicated by '1.' and '2.' above the staff. The music continues with eighth and sixteenth notes.

Musical staff for Corrente, measures 74-81. It includes first and second endings, indicated by '1.' and '2.' above the staff. The piece concludes with a double bar line and a 3/4 time signature change.

IV - Sarabande

Gently

Musical staff for Sarabande, measures 82-90. The staff is in bass clef with a key signature of one sharp (F#) and a 3/4 time signature. It features a slow, melodic line with a repeat sign.

Musical staff for Sarabande, measures 91-98. It includes first and second endings, indicated by '1.' and '2.' above the staff. The tempo changes to Allegro, indicated by the word 'Allegro' above the staff. The time signature changes to 6/8.

V - Giga

Musical staff for Giga, measures 99-105. The staff is in bass clef with a key signature of one sharp (F#). It features a fast, rhythmic melody with a repeat sign.

Musical staff for Giga, measures 106-112. It continues the fast, rhythmic melody with various note values and rests.

Musical staff for Giga, measures 113-119. It includes first and second endings, indicated by '1.' and '2.' above the staff. The music features a mix of eighth and sixteenth notes.

Musical staff for Giga, measures 120-126. It continues the fast, rhythmic melody with various note values and rests.

Musical staff for Giga, measures 127-132. It continues the fast, rhythmic melody with various note values and rests.

Musical staff for Giga, measures 133-140. It includes first and second endings, indicated by '1.' and '2.' above the staff. The piece concludes with a double bar line.