

Oboe

6 SUONATAE

From Primo Registro of the Organo Suonarino

Bearbeitung für Doppelrohrquartett

SUONATA PRIMA, FUGA PLAGALE

ADRIANO BANCHIERI

6

11

16

SUONATA SECUNDA, FUGA TRIPLICATA

20

24

28

32

36

SUONATA QUINTA, FUGA HARMONICA

Musical score for Sonata Quinta, Fuga Harmonica, measures 82-98. The score is written in 4/4 time and consists of five staves. Measure 82 starts with a treble clef and a 4/4 time signature. The melody begins with a half note G4, followed by quarter notes A4, B4, and C5. The second staff (measure 86) features a whole note G4, a half note A4, and a quarter note B4, with a fermata over the B4 and a '2' above it. The third staff (measure 90) continues the melody with quarter notes C5, B4, A4, and G4. The fourth staff (measure 94) includes a quarter rest, followed by quarter notes A4, B4, C5, and D5, and a quarter note E5. The fifth staff (measure 98) concludes with quarter notes F5, E5, D5, and C5, ending with a double bar line.

SUONATA SESTA, FUGA TRIPPLICATA

Musical score for Sonata Sesta, Fuga Triplicata, measures 103-120. The score is written in 4/4 time with a key signature of one flat (Bb) and consists of five staves. Measure 103 starts with a treble clef and a 4/4 time signature. The melody begins with a half note Bb4, followed by quarter notes C5, D5, and E5. The second staff (measure 107) features a triplet of eighth notes (F5, G5, A5) followed by a quarter note Bb4, a quarter note C5, and a quarter note D5. The third staff (measure 114) continues with quarter notes E5, F5, G5, and A5, followed by a quarter note Bb4. The fourth staff (measure 117) includes a quarter note C5, a quarter note D5, a quarter note E5, and a quarter note F5. The fifth staff (measure 120) concludes with quarter notes G5, F5, E5, and D5, ending with a double bar line.

Englischhorn

6 SUONATAE

From Primo Registro of the Organo Suonarino

Bearbeitung für Doppelrohrquartett

SUONATA PRIMA, FUGA PLAGALE

ADRIANO BANCHIERI

Musical score for the first sonata, Fuga Plagale, in G major, 4/4 time. It consists of four staves of music. The first staff starts with a treble clef, a key signature of one sharp (F#), and a 4/4 time signature. It begins with a measure containing a fermata over a whole note G4, with a '2' above it. The second staff starts at measure 6, showing a more active melodic line with eighth and sixteenth notes. The third staff starts at measure 11, continuing the melodic development. The fourth staff starts at measure 16 and concludes the piece with a double bar line and repeat dots.

SUONATA SECUNDA, FUGA TRIPLICATA

Musical score for the second sonata, Fuga Triplicata, in G major, 4/4 time. It consists of five staves of music. The first staff starts at measure 20 with a treble clef, a key signature of one sharp (F#), and a 4/4 time signature. It begins with a measure containing a fermata over a whole note G4. The second staff starts at measure 24, showing a melodic line with eighth notes. The third staff starts at measure 28, featuring a more complex rhythmic pattern with sixteenth notes. The fourth staff starts at measure 32, continuing the melodic line. The fifth staff starts at measure 36 and concludes the piece with a double bar line and repeat dots.

SUONATA TERZA, FUGA GRAVE

Musical score for Sonata Terza, Fuga Grave, measures 40-56. The score is written in treble clef, 4/4 time, and D major. It consists of five staves of music. Measure 40 starts with a half rest followed by a half note G4. Measure 41 has a half note A4, a half note B4, and a half note C5. Measure 42 has a half note D5, a half note E5, and a half note F5. Measure 43 has a half note G5, a half note A5, and a half note B5. Measure 44 has a half note C6, a half note B5, and a half note A5. Measure 45 has a half note G5, a half note F5, and a half note E5. Measure 46 has a half note D5, a half note C5, and a half note B4. Measure 47 has a half note A4, a half note G4, and a half note F4. Measure 48 has a half note E4, a half note D4, and a half note C4. Measure 49 has a half note B3, a half note A3, and a half note G3. Measure 50 has a half note F3, a half note E3, and a half note D3. Measure 51 has a half note C3, a half note B2, and a half note A2. Measure 52 has a half note G2, a half note F2, and a half note E2. Measure 53 has a half note D2, a half note C2, and a half note B1. Measure 54 has a half note A1, a half note G1, and a half note F1. Measure 55 has a half note E1, a half note D1, and a half note C1. Measure 56 has a half note B0, a half note A0, and a half note G0.

SUONATA QUARTA, FUGA CROMATICA

Musical score for Sonata Quarta, Fuga Cromatica, measures 61-77. The score is written in treble clef, 4/4 time, and D major. It consists of five staves of music. Measure 61 starts with a half rest followed by a half note G4. Measure 62 has a half note A4, a half note B4, and a half note C5. Measure 63 has a half note D5, a half note E5, and a half note F5. Measure 64 has a half note G5, a half note A5, and a half note B5. Measure 65 has a half note C6, a half note B5, and a half note A5. Measure 66 has a half note G5, a half note F5, and a half note E5. Measure 67 has a half note D5, a half note C5, and a half note B4. Measure 68 has a half note A4, a half note G4, and a half note F4. Measure 69 has a half note E4, a half note D4, and a half note C4. Measure 70 has a half note B3, a half note A3, and a half note G3. Measure 71 has a half note F3, a half note E3, and a half note D3. Measure 72 has a half note C3, a half note B2, and a half note A2. Measure 73 has a half note G2, a half note F2, and a half note E2. Measure 74 has a half note D2, a half note C2, and a half note B1. Measure 75 has a half note A1, a half note G1, and a half note F1. Measure 76 has a half note E1, a half note D1, and a half note C1. Measure 77 has a half note B0, a half note A0, and a half note G0.

SUONATA QUINTA, FUGA HARMONICA

Musical score for Sonata Quinto, Fuga Harmonica, measures 82-98. The score is written in treble clef with a key signature of one sharp (F#) and a time signature of 4/4. The music consists of five staves. Measure 82 starts with a whole rest. Measure 86 features a triplet of eighth notes. Measure 98 ends with a double bar line.

SUONATA SESTA, FUGA TRIPLICATA

Musical score for Sonata Sesto, Fuga Triplicata, measures 103-120. The score is written in treble clef with a key signature of one flat (Bb) and a time signature of 4/4. The music consists of six staves. Measure 103 starts with a whole rest. Measure 107 features a double bar line and a fermata. Measure 114 features a fermata. Measure 120 ends with a double bar line.

Baritonoboe

6 SUONATAE

From Primo Registro of the Organo Suonarino

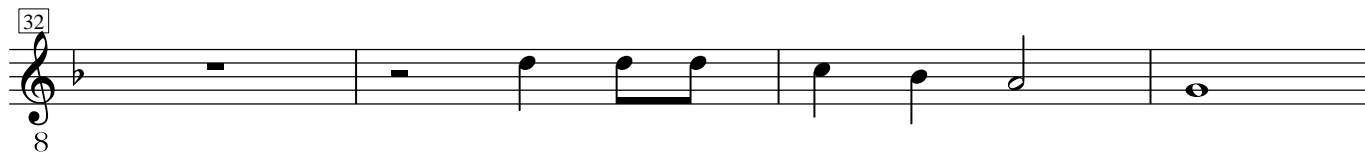
Bearbeitung für Doppelrohrquartett

SUONATA PRIMA, FUGA PLAGALE

ADRIANO BANCHIERI



SUONATA SECUNDA, FUGA TRIPLICATA



SUONATA TERZA, FUGA GRAVE

Musical score for Sonata Terza, Fuga Grave, measures 40-56. The score is written in treble clef with a 4/4 time signature. The key signature has one sharp (F#). The music consists of five staves of music. Measure 40 starts with a whole rest. The melody begins in measure 41 with a half note G4, followed by quarter notes A4, B4, and C5. Measure 42 continues with quarter notes D5, E5, and F#5. Measure 43 has quarter notes G5, F#5, and E5. Measure 44 has quarter notes D5, C5, and B4. Measure 45 has quarter notes A4, G4, and F#4. Measure 46 has quarter notes E4, D4, and C4. Measure 47 has a whole rest. Measure 48 has a whole rest with a fermata and a '2' above it, indicating a second ending. Measure 49 has a whole rest. Measure 50 has a whole rest. Measure 51 has a whole rest. Measure 52 has a whole note G4. Measure 53 has a whole note F#4. Measure 54 has a whole note E4. Measure 55 has a whole note D4. Measure 56 has a whole note C4.

SUONATA QUARTA, FUGA CROMATICA

Musical score for Sonata Quarta, Fuga Cromatica, measures 61-77. The score is written in treble clef with a 4/4 time signature. The key signature has two flats (Bb and Eb). The music consists of five staves of music. Measure 61 starts with a whole rest. The melody begins in measure 62 with a half note G4, followed by quarter notes F#4, E4, and D4. Measure 63 continues with quarter notes C4, B3, and A3. Measure 64 has quarter notes G3, F3, and E3. Measure 65 has quarter notes D3, C3, and B2. Measure 66 has quarter notes A2, G2, and F2. Measure 67 has quarter notes E2, D2, and C2. Measure 68 has quarter notes B1, A1, and G1. Measure 69 has quarter notes F1, E1, and D1. Measure 70 has quarter notes C1, B0, and A0. Measure 71 has quarter notes G0, F0, and E0. Measure 72 has quarter notes D0, C0, and B0. Measure 73 has quarter notes A0, G0, and F0. Measure 74 has quarter notes E0, D0, and C0. Measure 75 has quarter notes B0, A0, and G0. Measure 76 has quarter notes F0, E0, and D0. Measure 77 has a whole note C0.

SUONATA QUINTA, FUGA HARMONICA

Musical score for Sonata Quinto, Fuga Harmonica, measures 82-98. The score is written in 4/4 time and features four staves. Measure 82 begins with a 4-measure rest. The music consists of eighth and sixteenth notes, with a final measure ending in a double bar line. A bass clef is present at the bottom of the fourth staff.

SUONATA SESTA, FUGA TRIPPLICATA

Musical score for Sonata Sesto, Fuga Triplicata, measures 103-120. The score is written in 4/4 time and features five staves. Measure 103 begins with a 3-measure rest. The music consists of eighth and sixteenth notes, with a final measure ending in a double bar line. A bass clef is present at the bottom of the fifth staff.

6 SUONATAE

Fagott

From Primo Registro of the Organo Suonarino

Bearbeitung für Doppelrohrquartett

SUONATA PRIMA, FUGA PLAGALE

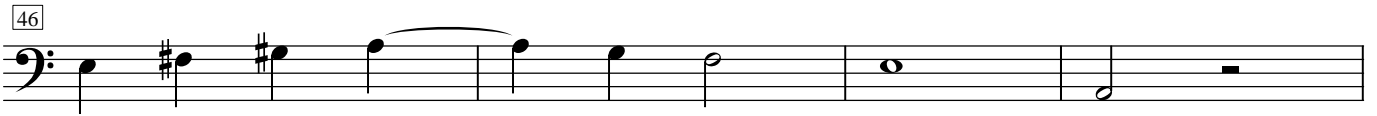
ADRIANO BANCHIERI



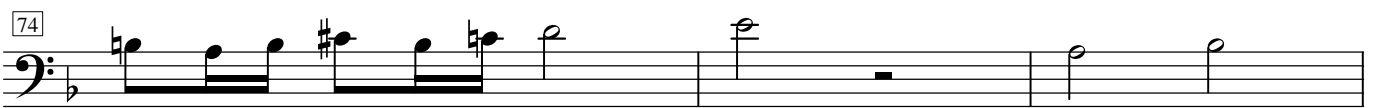
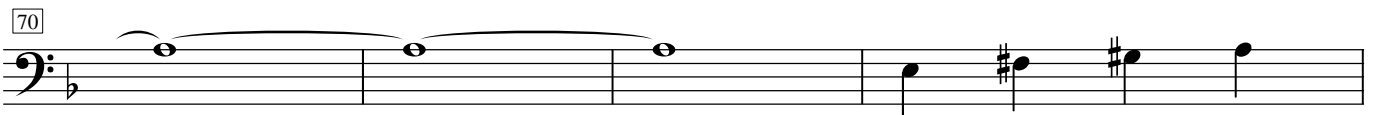
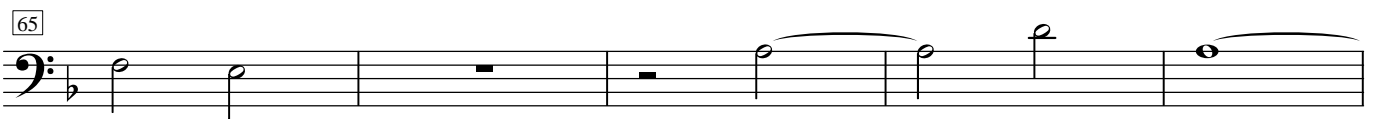
SUONATA SECUNDA, FUGA TRIPLICATA



SUONATA TERZA, FUGA GRAVE



SUONATA QUARTA, FUGA CROMATICA



SUONATA QUINTA, FUGA HARMONICA

82

89

94

98

Detailed description: This block contains the musical notation for measures 82 through 98 of the piece 'SUONATA QUINTA, FUGA HARMONICA'. It consists of five staves of music in bass clef with a 4/4 time signature. Measure 82 features a quintuplet of eighth notes. Measure 89 features a triplet of eighth notes. The notation includes various note values, rests, and articulation marks.

SUONATA SESTA, FUGA TRIPLICATA

103

110

114

117

120

Detailed description: This block contains the musical notation for measures 103 through 120 of the piece 'SUONATA SESTA, FUGA TRIPLICATA'. It consists of five staves of music in bass clef with a 4/4 time signature and a key signature of one flat. Measure 103 features a quintuplet of eighth notes. Measure 117 features a duplet of eighth notes. The notation includes various note values, rests, and articulation marks.