

Suite D-Dur

Ouverture

(FaWV K: D 7)

J.F. Fasch

Viola

5

9

12 1. 2. §

17

21

26

30

35

39 *p*

43

47

51



55



59



64

*f*

69



73



78



82

*p*[*f*]

88



92



97



1.

%

2.

3/4

:

C

Air en Menuet



8



15



22



29



36



44



52



60



Gavotte



7



15



22



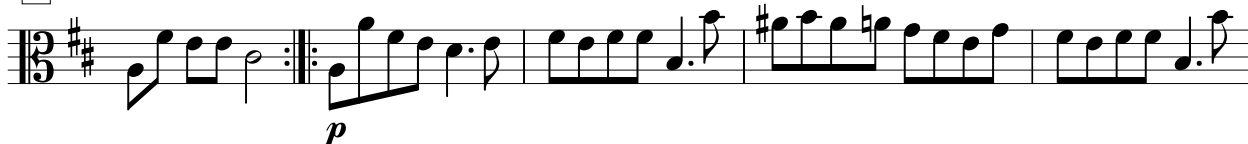
28



Aria Adagio



6



11



15



Passepied 1



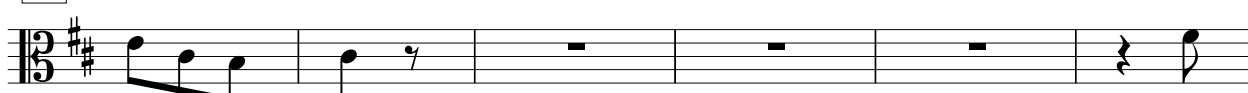
7



13



19



25



Passepied 2 tacet Passepied 1 da capo

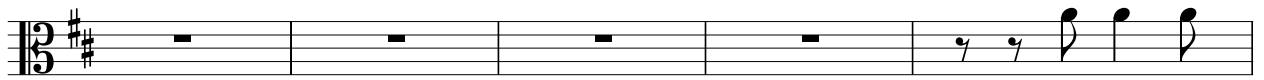
[Gigue]La Chasse



6



11



16



22



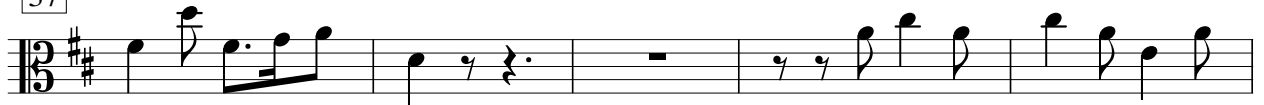
27



32



37



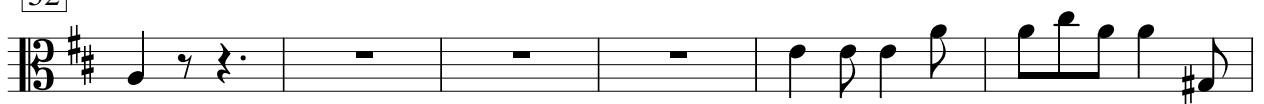
42



47



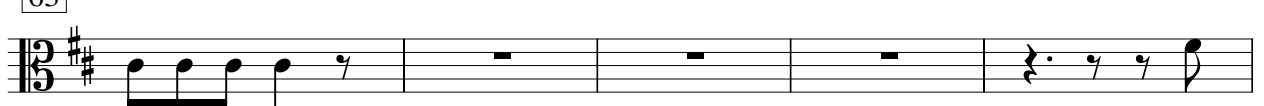
52



58



63



68



73



78



83



89



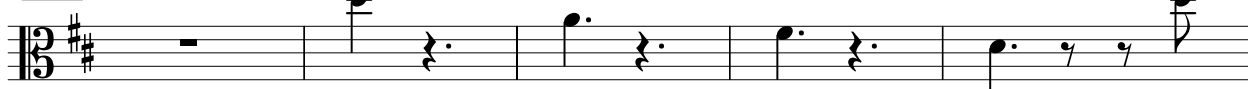
94



99



105



110

