

Ach bleib bei uns, Herr Jesu Christ (I. Chorale)

(Orig chalumeaux parts notated in bass clef an octave lower)

Chalumeau 1

Musical notation for Chalumeau 1, starting at measure 1. The staff is in treble clef with a key signature of one flat (B-flat) and a 3/4 time signature. The music begins with a mezzo-piano (*mp*) dynamic marking. The melody consists of quarter and eighth notes.

6

Ch. 1

Musical notation for Ch. 1, starting at measure 6. The staff is in treble clef with a key signature of one flat. The music continues with eighth and quarter notes.

11

Ch. 1

Musical notation for Ch. 1, starting at measure 11. The staff is in treble clef with a key signature of one flat. The music continues with eighth and quarter notes.

17

Ch. 1

Musical notation for Ch. 1, starting at measure 17. The staff is in treble clef with a key signature of one flat. The music continues with eighth and quarter notes.

23

Ch. 1

Musical notation for Ch. 1, starting at measure 23. The staff is in treble clef with a key signature of one flat. The music continues with eighth and quarter notes.

29

Ch. 1

Musical notation for Ch. 1, starting at measure 29. The staff is in treble clef with a key signature of one flat. The music continues with eighth and quarter notes.

36

Ch. 1

Musical notation for Ch. 1, starting at measure 36. The staff is in treble clef with a key signature of one flat. The music continues with eighth and quarter notes, ending with a fermata over a dotted quarter note.

Ach bleib bei uns, Herr Jesu Christ (I. Chorale)

(Orig chalumeaux parts notated in bass clef an octave lower)

Chalumeau 2 

6 

11 

17 

23 

29 

36 

Ach bleib bei uns, Herr Jesu Christ (I. Chorale)

(Chalumeau 1 part transposed for clarinet)

Clarinet in B \flat *mp*

6

Cl. in B \flat

11

Cl. in B \flat

17

Cl. in B \flat

23

Cl. in B \flat

28

Cl. in B \flat

34

Cl. in B \flat

Ach bleib bei uns, Herr Jesu Christ (I. Chorale)

(Chalumeau 2 part transposed for bass clarinet)

Bass Clarinet in B \flat 

6 

B. Cl. in B \flat 

11 

17 

23 

28 

34 

Ach bleib bei uns, Herr Jesu Christ (I. Chorale)

Violin I *mp*

6
Vln. I *p* *pp* *mp*

11
Vln. I *mp*

16
Vln. I

20
Vln. I *p*

24
Vln. I *mp*

28
Vln. I *pp* *mp*

32
Vln. I

36
Vln. I *tr*

Ach bleib bei uns, Herr Jesu Christ (I. Chorale)

Violin II *mp*

6
Vln. II *p* *pp* *mp*

11
Vln. II *mp*

20
Vln. II *p* *mp*

26
Vln. II *pp* *mp*

33
Vln. II

Ach bleib bei uns, Herr Jesu Christ (I. Chorale)

Viola 
8
Vla. 
17
Vla. 
25
Vla. 
33
Vla. 

Ach bleib bei uns, Herr Jesu Christ (I. Chorale)

Basso

mp

8

mp

17


26

34

Detailed description: This image shows the bassoon part of a chorale. It consists of five systems of musical notation. The first system starts at measure 1 and ends at measure 7, with a dynamic marking of *mp*. The second system starts at measure 8 and ends at measure 14, also with a dynamic marking of *mp*. The third system starts at measure 17 and ends at measure 25. The fourth system starts at measure 26 and ends at measure 33. The fifth system starts at measure 34 and ends at measure 36, concluding with a repeat sign. Fingerings are indicated by numbers 3, 4, 5, and 6 above the notes. The key signature has one flat (B-flat) and the time signature is 3/4.

Ach bleib bei uns, Herr Jesu Christ (I. Chorale)


Soprano



Musical staff for Soprano, measures 1-11, showing a whole rest in each measure.

12

S.



Ach blei bei uns, Herr Je - su Christ, Weil es nun A - bend
In die - ser letzt'n be - trüb - ten Zeit Ver - leih uns Herr, Be -

20

S.



wor - den ist; Dein gött - lich Wort, das hei - le Licht,
stän - dig - keit, Dass wir dein Wort und Sa - kra - ment

29


S.



Lass ja bei uns aus - lö - schen nicht!
Rein b'hal - ten bis an un - ser End!


Ach bleib bei uns, Herr Jesu Christ (I. Chorale)

Alto



12

A.



Ach blei bei uns Herr Je - su Christ, Weil es nun A - bend
In die - ser lezt'n be - trüb - ten Zeit Ver - leih uns Herr, Be -

20


A.



wor - den ist; Dein gött - lich Wort, das hei - le Licht,
stän - dig - keit, Dass wir dein Wort und Sa - kra - ment

28

A.



Lass ja bei uns aus - lö - schen nicht!
Rein b'hal - ten bis an un - ser End!

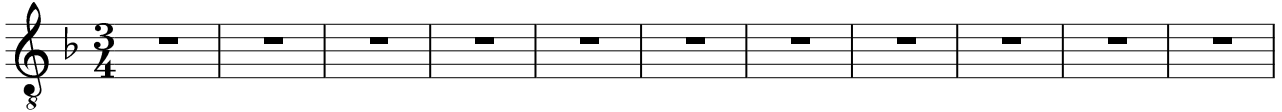
34

A.




Ach bleib bei uns, Herr Jesu Christ (I. Chorale)

Tenor



12

T.



Ach blei bei uns Herr Je - su Christ, Weil es nun A - ben
In die - ser lezt'n be - trüb - ten Zeit Ver - leih uns Herr, Be -

20

T.



wor - den ist; Dein gött - lich Wort, das hei - le Licht,
stän - dig keit Dass wir dein Wort und Sa - kra - ment

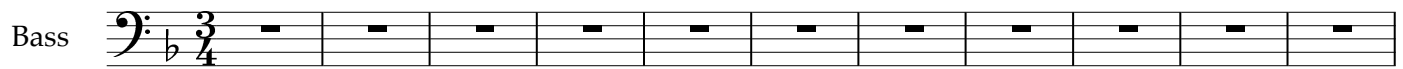
29

T.



Lass ja bei uns aus - lö - schen nicht!
Rein b'hal - ten bis an un - ser End!

Ach bleib bei uns, Herr Jesu Christ (I. Chorale)



12

B.



Ach blei bei uns Herr Je - su Christ, Weil es nun A - ben
In die - ser lezt'n be - trüb - ten Zeit Ver - leih uns Herr, Be -

20

B.



wor - den ist; Dein gött - lich Wort, das hei - le Licht,
stän - dig keit, Dass wir dein Wort und Sa - kra - ment

29

B.



Lass ja bei uns - aus - lö - schen nicht!
Rein b'hal - ten bis an un - ser End!