

Serenata

[Prolog] *Un poco allegro*

Johann Friedrich Fasch

Viola

The Prolog section consists of six staves of music. The first staff begins with a dynamic marking of *[f]*. The second staff has dynamics *f*, *p*, *f*, *p*, *f*, and *p*. The third staff has dynamics *p*, *f*, *p*, *f*, and *p*. The fourth staff has a dynamic marking of *f*. The fifth staff has a dynamic marking of *f*. The sixth staff has dynamics *f*, *p*, and *f*. The music features various rhythmic patterns, including eighth and sixteenth notes, and rests.

Recitativo 1

da capo

The Recitativo 1 section consists of three staves of music. The first staff begins with a dynamic marking of *f* and a measure rest of 10. The second staff has a dynamic marking of *f*. The third staff has a dynamic marking of *f*. The music features various rhythmic patterns, including eighth and sixteenth notes, and rests.

Coro Allegro

7

13

26

37

43

49

55

68

74

80

86

91

96

p *f* *p* *f* *p* *pp* *p*

Recitativo 2 tacet

da capo

Aria (Aurora)



Musical score for the Aria (Aurora) in 3/8 time, key of D major. The score consists of 15 staves of music, with measure numbers 4, 7, 11, 20, 23, 26, 29, 32, 35, 38, 44, and 47 marked at the beginning of their respective staves. The music features various dynamics including *f* (forte), *p* (piano), and *[f]*. It includes a trill in measure 11, a sixteenth-note triplet in measure 20, and a sixteenth-note pair in measure 38. The piece concludes with a double bar line and a repeat sign in measure 47.

Recitativo 3 tacet

da capo

Aria (Phoebus)

Musical score for the Aria (Phoebus) in 3/4 time, key of D major. The score consists of ten staves of music. The first staff begins with a treble clef, a key signature of one sharp (F#), and a 3/4 time signature. The music features a series of eighth-note patterns, some with slurs and accents. Measure numbers 7, 13, 23, 50, 59, 64, 69, and 14 are indicated at the start of their respective staves. A dynamic marking of *f* (forte) appears below the 50th measure. A triplet of eighth notes is marked with a '3' above it in measures 23 and 59. The piece concludes with a double bar line and repeat dots.

Recitativo 4 tacet

da capo

Aria (Hesperus) *Andante*

Musical score for the Aria (Hesperus) in common time (C), key of D major. The score consists of eight staves of music. The first staff begins with a treble clef, a key signature of one sharp (F#), and a common time signature. The music is characterized by a slow, steady pace with dotted rhythms and slurs. Measure numbers 6, 9, 14, 20, 26, 37, and 16 are indicated at the start of their respective staves. Dynamic markings include *pizz.* (pizzicato) at the beginning of the first staff and in brackets in measures 14 and 20. A triplet of eighth notes is marked with a '3' above it in measure 6. A trill is marked with 'tr' above it in measure 37. The piece concludes with a double bar line and repeat dots.

Recitativo 5 tacet

da capo

Aria (Cynthia) *Affettuoso*

9 *p*

17

22

49

57 *p* *pp* *p*

65

73

81

102 *p*

110 *p*

12

3

p

Recitativo 6

da capo

7

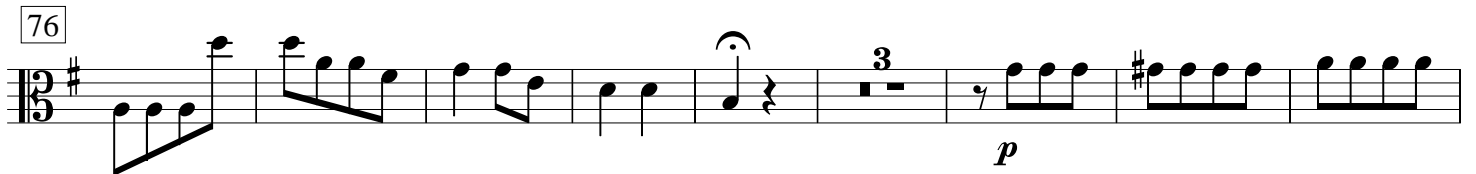
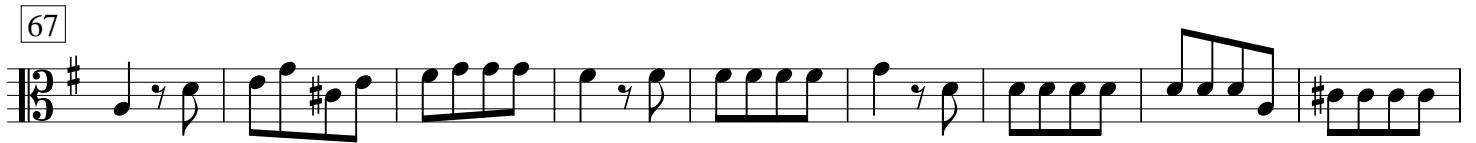
15

25

31

38

Aria (Cynthia)



Recitativo 7



Coro



7



12



17



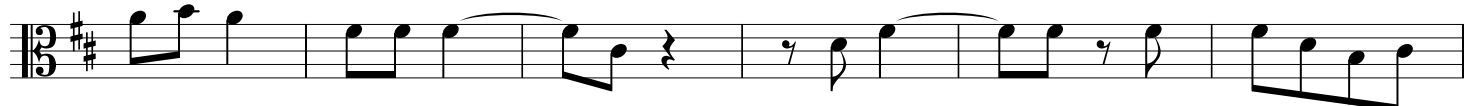
22



27



33



39



45



51



da capo