

RIGAUDON in A

for Trumpet & Organ

Score (01':02'')

Esprit - Philippe Chédeville (1696 - 1762)

Arr. Michel Rondeau

Allegro $\text{♩} = 90$

Trumpet in C

Organ

Detailed description: This system contains the first four measures of the piece. The Trumpet in C part (top staff) begins with a treble clef, a key signature of two sharps (F# and C#), and a common time signature. It plays a sequence of eighth notes: F#4, A4, B4, C5, D5, E5, F#5, G5, A5, B5, C6, D6, E6, F#6, G6, A6, B6, C7. The Organ part (bottom two staves) provides accompaniment. The right hand (treble clef) plays chords and single notes, while the left hand (bass clef) plays a steady eighth-note bass line. A trill (tr) is indicated above the final note of the trumpet part.

C Tpt.

Org.

Detailed description: This system contains measures 5 through 8. The C Trumpet part (top staff) has a five-measure rest in measure 5, then plays a sequence of eighth notes: F#4, A4, B4, C5, D5, E5, F#5, G5, A5, B5, C6, D6, E6, F#6, G6, A6, B6, C7. The Organ part (bottom two staves) continues the accompaniment. A trill (tr) is indicated above the final note of the trumpet part. The system concludes with a double bar line and repeat signs.

C Tpt.

Org.

Detailed description: This system contains measures 9 through 12. The C Trumpet part (top staff) has a nine-measure rest in measure 9, then plays a sequence of eighth notes: F#4, A4, B4, C5, D5, E5, F#5, G5, A5, B5, C6, D6, E6, F#6, G6, A6, B6, C7. The Organ part (bottom two staves) continues the accompaniment, featuring a slur over the right-hand part in measures 10 and 11. The system concludes with a double bar line and repeat signs.

RIGAUDON in A - Chédeville - Score

14

C Tpt.

Org.

Detailed description: This system covers measures 14 through 18. The C Tpt. part begins with a half rest in measure 14, followed by a quarter rest, then a quarter note G4, and a half note G4 in measure 15. In measure 16, it plays a quarter note G4, a quarter note F#4, and a half note G4. In measure 17, it plays a quarter note G4, a quarter note F#4, and a half note G4. In measure 18, it plays a quarter note G4 and a half note G4. The Organ part features a complex accompaniment. In measure 14, the right hand plays a half note G4 and a half note G4, while the left hand plays a half note G2 and a half note G2. In measure 15, the right hand plays a quarter note G4, a quarter note F#4, and a half note G4, while the left hand plays a quarter note G2, a quarter note F#2, and a half note G2. In measure 16, the right hand plays a quarter note G4, a quarter note F#4, and a half note G4, while the left hand plays a quarter note G2, a quarter note F#2, and a half note G2. In measure 17, the right hand plays a quarter note G4, a quarter note F#4, and a half note G4, while the left hand plays a quarter note G2, a quarter note F#2, and a half note G2. In measure 18, the right hand plays a quarter note G4 and a half note G4, while the left hand plays a quarter note G2 and a half note G2.

19

C Tpt.

Org.

Detailed description: This system covers measures 19 through 23. The C Tpt. part plays a quarter note G4, a quarter note F#4, and a half note G4 in measure 19. In measure 20, it plays a quarter note G4, a quarter note F#4, and a half note G4. In measure 21, it plays a quarter note G4, a quarter note F#4, and a half note G4. In measure 22, it plays a quarter note G4, a quarter note F#4, and a half note G4. In measure 23, it plays a quarter note G4, a quarter note F#4, and a half note G4. The Organ part features a complex accompaniment. In measure 19, the right hand plays a half note G4 and a half note G4, while the left hand plays a half note G2 and a half note G2. In measure 20, the right hand plays a half note G4 and a half note G4, while the left hand plays a half note G2 and a half note G2. In measure 21, the right hand plays a half note G4 and a half note G4, while the left hand plays a half note G2 and a half note G2. In measure 22, the right hand plays a half note G4 and a half note G4, while the left hand plays a half note G2 and a half note G2. In measure 23, the right hand plays a half note G4 and a half note G4, while the left hand plays a half note G2 and a half note G2.

RIGAUDON in A

for Trumpet & Organ

C Trumpet

Esprit - Philippe Chédeville (1696 - 1762)
Arr. Michel Rondeau

Allegro $\text{♩} = 90$

6

13

19

RIGAUDON in A

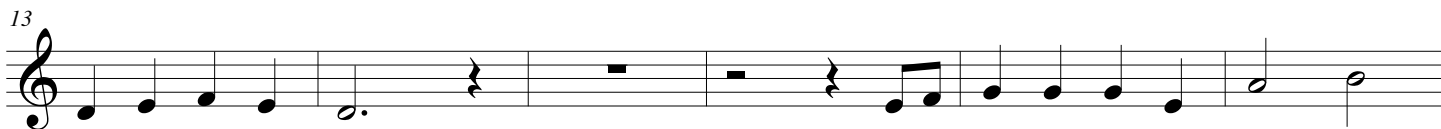
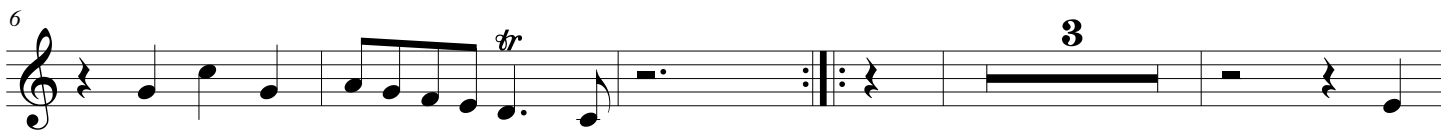
for Trumpet & Organ

A Trumpet

Esprit - Philippe Chédeville (1696 - 1762)

Arr. Michel Rondeau

Allegro $\text{♩} = 90$



RIGAUDON in A

for Trumpet & Organ

D Trumpet

Esprit - Philippe Chédeville (1696 - 1762)
Arr. Michel Rondeau

Allegro $\text{♩} = 90$

6

13

19

RIGAUDON in A

for Trumpet & Organ

Organ

Esprit - Philippe Chédeville (1696 - 1762)

Arr. Michel Rondeau

Trumpet in C

Allegro ♩ = 90

Organ

Detailed description: This system contains the first four measures of the piece. The Trumpet in C part (top staff) begins with a treble clef, a key signature of two sharps (F# and C#), and a common time signature. It plays a sequence of eighth notes: G4, A4, B4, C5, B4, A4, G4, followed by a trill on G4. The Organ part (bottom two staves) also has a treble and bass clef with the same key signature and time signature. The right hand plays chords and single notes, while the left hand plays a simple eighth-note bass line. The tempo is marked 'Allegro' with a quarter note equal to 90 beats per minute.

C Tpt.

Org.

Detailed description: This system contains measures 5 through 8. The C Trumpet part (top staff) has a measure rest for the first measure, then enters with eighth notes: G4, A4, B4, C5, B4, A4, G4, ending with a trill on G4. The Organ part (bottom two staves) continues with a more active accompaniment, featuring sixteenth-note runs in the right hand and eighth notes in the left hand. A double bar line with repeat dots appears at the end of measure 8.

C Tpt.

Org.

Detailed description: This system contains measures 9 through 12. The C Trumpet part (top staff) has a measure rest for the first three measures, then enters with eighth notes: G4, A4, B4, C5, B4, A4, G4. The Organ part (bottom two staves) features a more complex accompaniment with a melodic line in the right hand and a bass line in the left hand. A slur is used over the right hand's melody in measures 10 and 11. A double bar line with repeat dots appears at the end of measure 12.

RIGAUDON in A - Chédeville - Organ

C Tpt.

Org.

14

C Tpt.

Org.

19

tr