

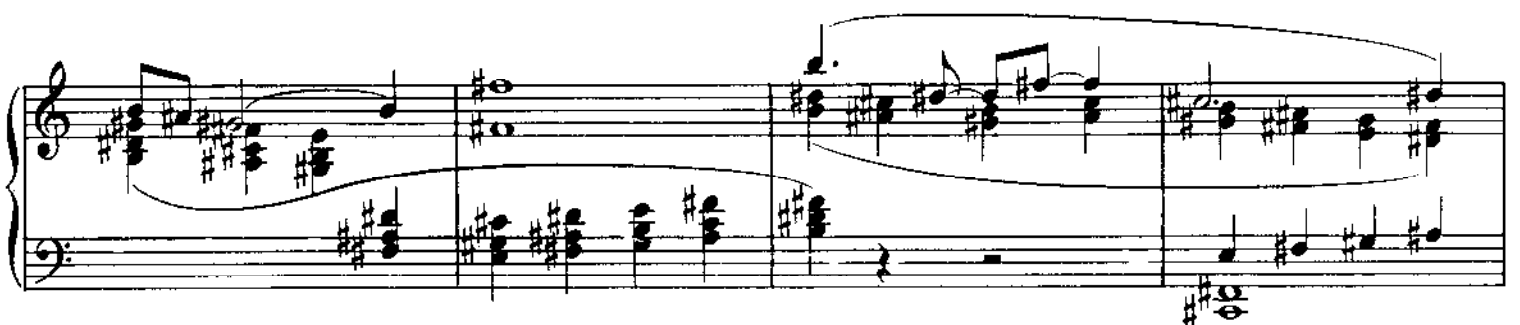
# Hommage à Albert Roussel



A. HONEGGER

$\text{♩} = 76$

PIANO



The image shows a page of musical notation for piano, consisting of six systems of staves. The notation includes treble and bass clefs, various notes, rests, and dynamic markings such as "cresc.", "p", and "pp". There are also performance instructions like "V" and "f".

- System 1:** Treble clef has a melodic line with a slur and a "cresc." marking. Bass clef has a bass line with a slur and a "f" marking.
- System 2:** Treble clef continues the melodic line with slurs. Bass clef continues the bass line with slurs.
- System 3:** Treble clef has a series of chords with slurs. Bass clef has a series of chords with slurs.
- System 4:** Treble clef has a series of chords with slurs. Bass clef has a series of chords with slurs.
- System 5:** Treble clef has a series of chords with slurs. Bass clef has a series of chords with slurs.
- System 6:** Treble clef has a series of chords with slurs. Bass clef has a series of chords with slurs.