

Look in the Glass

(Words: William Shakespeare s.3)

for Soprano, Recorder & Piano

Soprano

Michel Rondeau

Feb.25th, 2008

Andante $\text{♩} = 55$



Look in thy glass and tell the face that view est



Now is the time that face should form a nother;



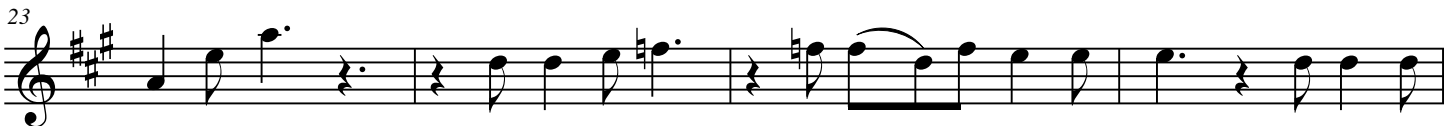
Whose fresh repair if now thou not re-new est,



Thou dost beguile the world, un-bless some nother,



For where is she so fair whose un-ear'd womb Dis-dains the til-lage of thy



hus-ban-dry? Or who is she so fond will be the tomb Of his self-



love, to stop pos-te-ri-ty? Thou art thy nother's



glass and she in thee Calls back the lovely

38

A - pril of her prime; — So thou through win - dows of thine — age shall see,

42

— Des-pite of wrin - kles this — thy gol-den time. —

47

But if thou live, re-mem-ber'd not to be, Die sin - gle

51

and thine im-age — dies with thee. Look in thy glass — and —

58

tell the face that view - est — Look in thy glass — and —

62

Slower

tell the face that view - est — Now is the time — that

66

face — should form a - no - - - ther;
rit.