

# Suite FaWV K:G2

con 2 Flauti, 2 Oboi, 2 Violini, 2 Viole, Fagotti e Basso

## Violino II

J. F. Fasch (1688-1758)

### [1.] Ouverture





131

136

141

146

[2.] Air

7

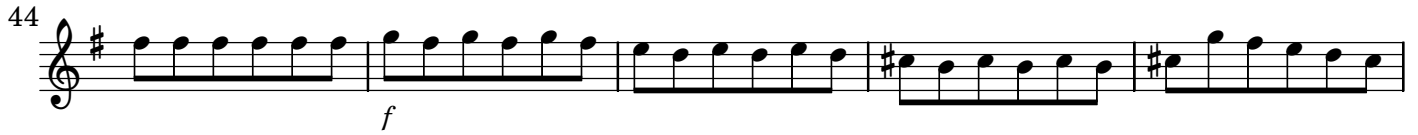
13

20

27

33

39

44 

49 

55 

62 

69 

[3.] Gavotte 1 - altern.



5 

9 

15 

19 

23 

29  Musical notation for measures 29-42. Measure 29 starts with a treble clef, a key signature of one sharp (F#), and a common time signature. The music consists of eighth and sixteenth notes. Measure 34 continues the melodic line. Measure 38 features a dynamic marking of *p*. Measure 43 includes a first ending bracket (1.) and a second ending bracket (2.) leading to a repeat sign.

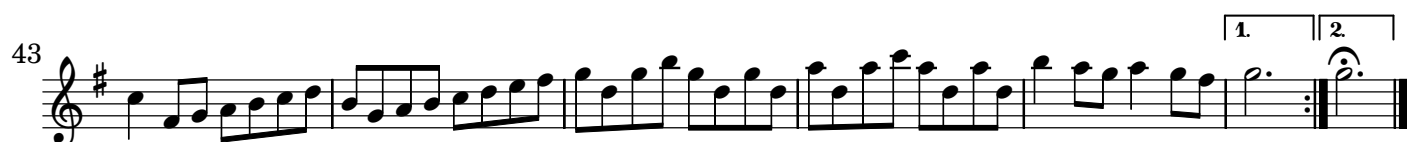
## [4.] Gavotte 2 - Tacet

## [5.] Air

 Musical notation for measures 1-13 of the 'Air' section. Measure 1 starts with a treble clef, a key signature of one sharp (F#), and a common time signature. Measure 3 has a dynamic marking of *f*. Measure 5 includes dynamic markings of *p*, *f*, and *p*. Measure 9 has a dynamic marking of *f* and the word *Solo* above it. Measure 13 starts with the word *Tutti* above it.



## [6.] Bouree 1 - altern.



## [7.] Bouree 2 - Tacet

## [8.] Menuet 1 - altern.



## [9.] Menuet 2 - Tacet