

GAVOTTE in d

(Manuscrit Parville - UC Beckerly Music Library - US-BEM 778)

for Trumpet & Organ

Score (00':45'')

Louis Couperin (1626 - 1661)

Arr. Michel Rondeau

Moderato $\text{♩} = 80$

Trumpet in C

Organ

This system contains the first four measures of the score. The Trumpet in C part is written in a single staff with a treble clef and a common time signature. It begins with a quarter note G4, followed by eighth notes A4 and B4, a quarter note C5 with a trill, and continues with a melodic line. The Organ part is written in two staves (treble and bass clefs) with a common time signature. The right hand provides harmonic support with chords and single notes, while the left hand plays a rhythmic accompaniment of eighth notes.

C Tpt.

Org.

This system contains measures 5 through 8. The C Trumpet part has a measure rest in measure 5, then enters in measure 6 with a quarter note G4, followed by eighth notes A4 and B4, a quarter note C5 with a trill, and continues with a melodic line. The Organ part continues with its accompaniment, featuring chords and single notes in the right hand and eighth notes in the left hand.

C Tpt.

Org.

This system contains measures 9 through 12. The C Trumpet part begins in measure 9 with a quarter note G4, followed by eighth notes A4 and B4, a quarter note C5 with a trill, and continues with a melodic line. The Organ part continues with its accompaniment, featuring chords and single notes in the right hand and eighth notes in the left hand.

GAVOTTE in d - Couperin - Score

2
14

C Tpt.

Org.

18

C Tpt.

Org.

22

C Tpt.

Org.

26

C Tpt.

Org.

GAVOTTE in d

(Manuscrit Parville - UC Beckerly Music Library - US-BEM 778)

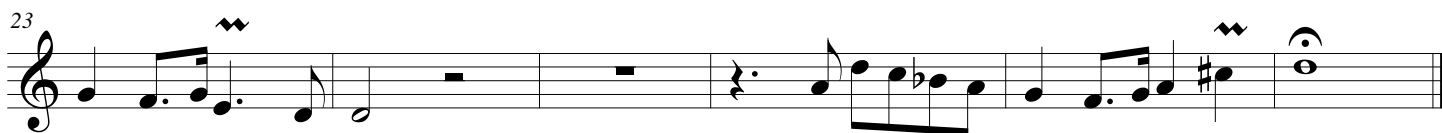
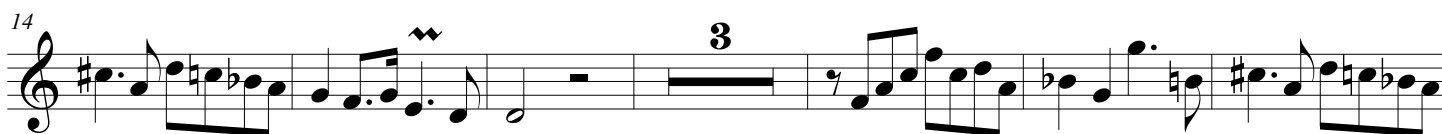
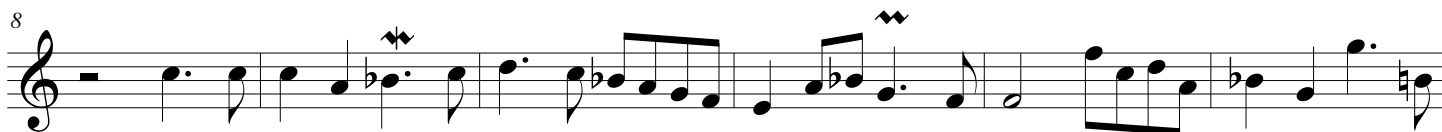
for Trumpet & Organ

Trumpet in C

Louis Couperin (1626 - 1661)

Arr. Michel Rondeau

Moderato $\text{♩} = 80$



GAVOTTE in d

(Manuscrit Parville - UC Beckerly Music Library - US-BEM 778)

for Trumpet & Organ

Trumpet in Bb

Louis Couperin (1626 - 1661)

Arr. Michel Rondeau

Moderato $\text{♩} = 80$

8

14

23

GAVOTTE in d

(Manuscrit Parville - UC Beckerly Music Library - US-BEM 778)

for Trumpet & Organ

Trumpet in D

Louis Couperin (1626 - 1661)

Arr. Michel Rondeau

Moderato $\text{♩} = 80$

8

14

23

GAVOTTE in d

(Manuscrit Parville - UC Beckerly Music Library - US-BEM 778)
for Trumpet & Organ

Louis Couperin (1626 - 1661)
Arr. Michel Rondeau

Organ

Trumpet in C

Moderato $\text{♩} = 80$

C Tpt.

Org.

C Tpt.

Org.

GAVOTTE in d - Couperin - Organ

2
14

C Tpt.

Org.

Detailed description: This system covers measures 2 to 14. The C Tpt. part begins at measure 2 with a dotted quarter note G4, followed by eighth notes A4, B4, and A4. The Organ part starts at measure 14 with a treble clef, a key signature of one sharp (F#), and a bass clef. The right hand plays chords and moving lines, while the left hand plays a steady eighth-note accompaniment.

18

C Tpt.

Org.

Detailed description: This system covers measures 18 to 22. The C Tpt. part has rests in measures 18 and 19, then enters in measure 20 with eighth notes G4, A4, B4, and A4. The Organ part continues with its accompaniment, featuring a melodic line in the right hand and a rhythmic pattern in the left hand.

22

C Tpt.

Org.

Detailed description: This system covers measures 22 to 26. The C Tpt. part repeats the melodic phrase from measure 2. The Organ part continues with its accompaniment, showing a consistent rhythmic and harmonic structure.

26

C Tpt.

Org.

Detailed description: This system covers measures 26 to 30. The C Tpt. part has a rest in measure 26, then enters in measure 27 with eighth notes G4, A4, B4, and A4. The Organ part concludes with a final chord in the right hand and a final note in the left hand.