

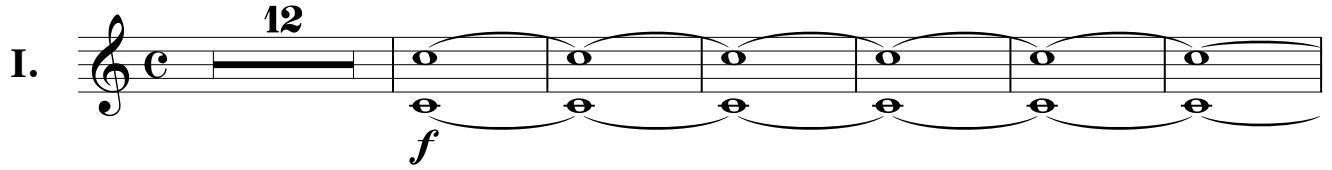
Trompa en
La y Re

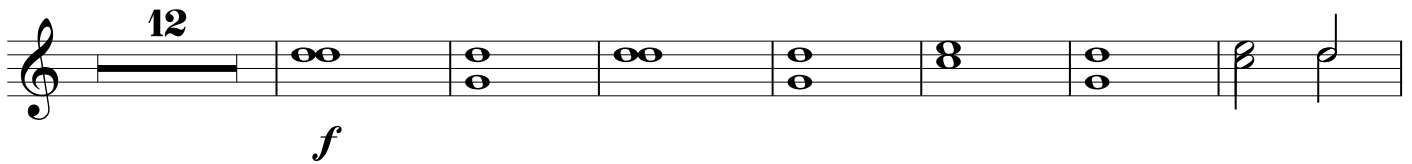
Sinfonia No 29

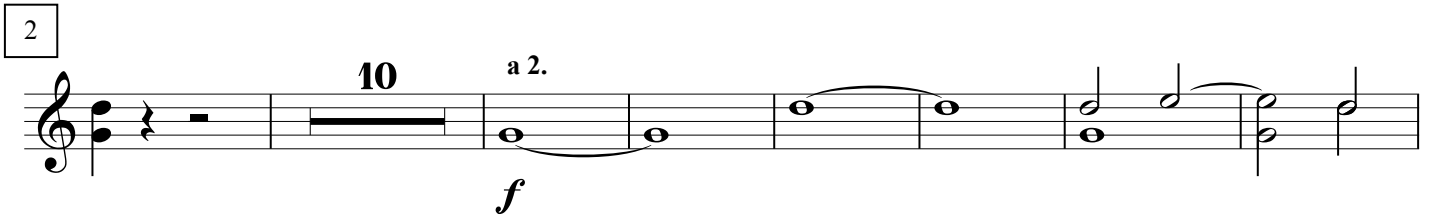
en La Mayor
K.201

Wolfgang Amadeus Mozart
Transcrip. Gory
info@gory.jazztel.es

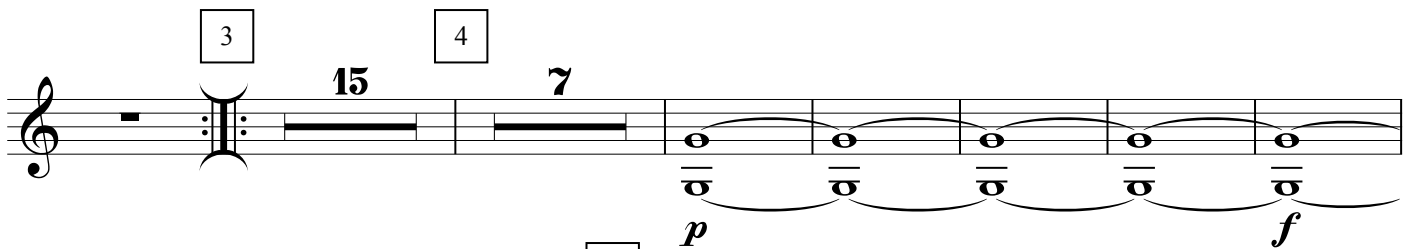
en A Allegro moderato

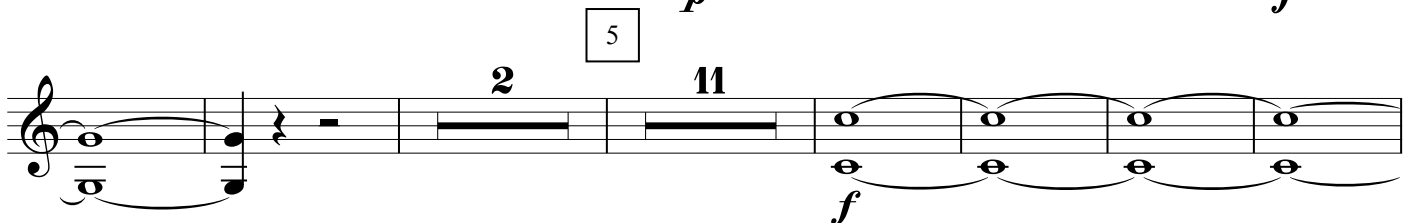
I. 

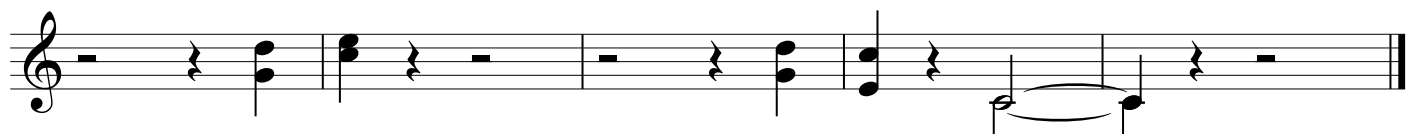


2 

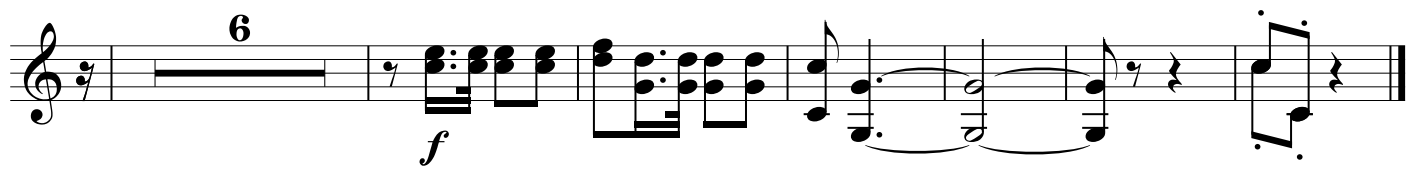
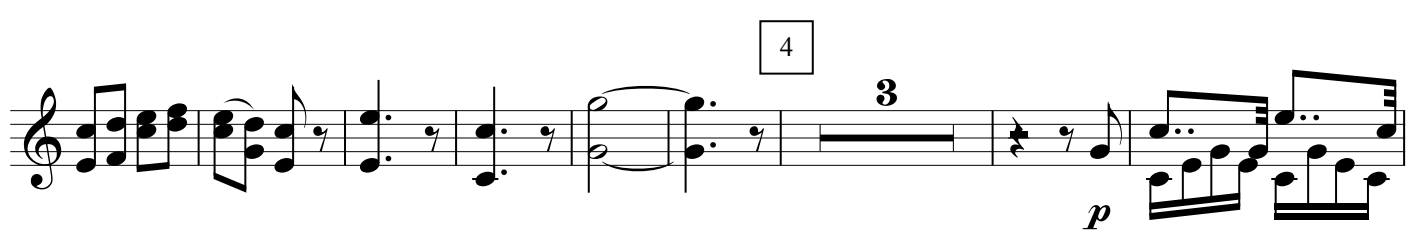


3 

5 



en D Andante

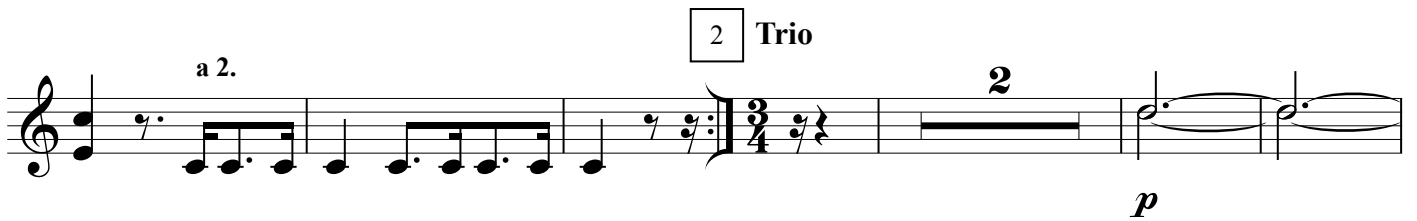


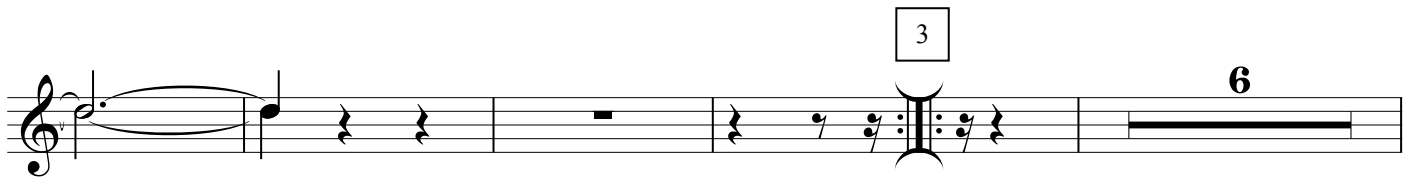
en A MENUETTO

III. 












D.C. al Menuetto

Allegro con spirito

IV. 



1

3

f

2

a 2.

18

f

a 2.

3

2

f

9

2

9

f

4

a 2.

2

f

5

6

6

a 2.

3

f

a 2.

a 2.

This musical staff contains a sequence of rhythmic patterns. It begins with a group of beamed eighth notes, followed by a whole rest. The pattern repeats with a variation in the second measure. The staff concludes with another group of beamed eighth notes and a whole rest.

7

18

f

This musical staff features a melodic line with a fermata over the eighth measure. The eighth measure is marked with the number '18' above it. The staff ends with a dynamic marking of *f* (forte) and a whole note chord.

a 2.

This musical staff shows a continuous eighth-note pattern in the upper voice, with a corresponding bass line. The pattern is marked with 'a 2.' above the staff.

8

f

2

This musical staff starts with a dynamic marking of *f* (forte) and contains a melodic line with a fermata over the eighth measure. The eighth measure is marked with the number '2' above it. The staff concludes with a melodic phrase.

a 2.

This musical staff contains a rhythmic pattern of eighth notes, marked with 'a 2.' above the staff.

2

This musical staff features a rhythmic pattern of eighth notes, followed by a fermata over the eighth measure. The eighth measure is marked with the number '2' above it.