

Alle Rechte vorbehalten.
„ORGANUM“
III. Reihe: Kammermusik.

Nr. 46.

Trio-Sonate C-Dur

für 2 Violinen oder 2 Flöten und Generalbass
Op. V Nr. 4

Pietro Locatelli
(1693—1764)

Bearbeitet von Hans Albrecht

Violine I (Flöte I)

Largo



Andante



SC3P
L77
2

Violine I (Flöte I)

23 *p* *f*

25

27

30

33

36 *p*

38 *f*

40

43

Violine I (Flöte I)

Allegro

(mf)

9

16

23

30

f

37

(mf)

44

51

59

68

75

82

Alle Rechte vorbehalten.
„ORGANUM“
III. Reihe: Kammermusik.

Nr. 46.

Trio-Sonate C-Dur

für 2 Violinen oder 2 Flöten und Generalbass

Op. V Nr. 4

Pietro Locatelli

(1693–1764)

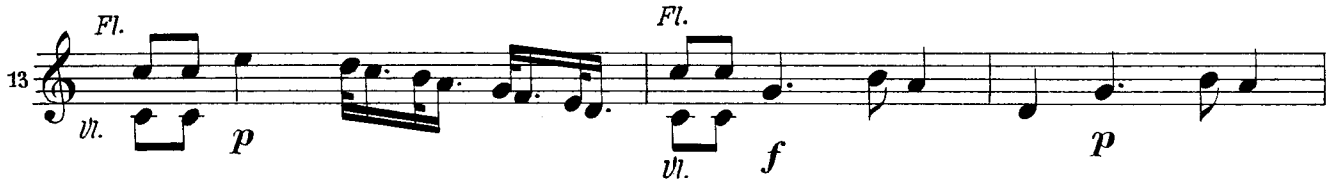
Bearbeitet von Hans Albrecht

Violine II (Flöte II)

Largo



Andante



sC39
L77
2

Violine II (Flöte II)

23 *p* *f*

25

27

30

33 *b*

36 *Fl.*
vl. *p*

38 *Fl.*
vl. *f*

40

43 *b*

Violine II (Flöte II)

Allegro

(mf)

8

16

24

p

30

f

(mf)

38

47

56

65

72

80

Alle Rechte vorbehalten.
„ORGANUM“
III. Reihe: Kammermusik.

Nr. 46.

Trio-Sonate C-Dur

für 2 Violinen oder 2 Flöten und Generalbass

Op. V Nr. 4

Pietro Locatelli

(1693–1764)

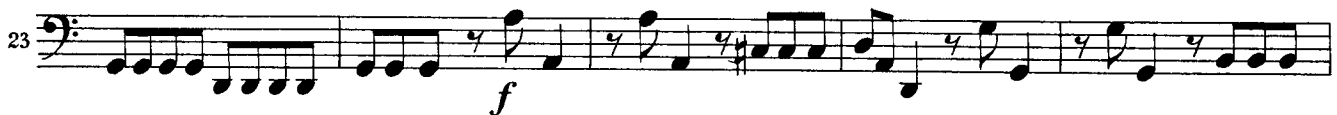
Bearbeitet von Hans Albrecht

Violoncello

Largo



Andante



SC39
L 9n
2

Violoncello

Allegro

Musical score for Violoncello, *Allegro*. The score is written in bass clef with a 2/4 time signature. It consists of ten staves of music, numbered 1, 9, 17, 25, 31, 38, 48, 58, 66, 74, and 81. The piece begins with a dynamic marking of *(mf)*. The first staff (measures 1-8) features a melodic line with eighth and sixteenth notes, accented. The second staff (measures 9-16) continues this melodic line. The third staff (measures 17-24) includes a repeat sign and a key signature change to one flat (B-flat). The fourth staff (measures 25-30) is marked *p* and features a dynamic shift to *f*. The fifth staff (measures 31-37) ends with a repeat sign and a dynamic marking of *(mf)*. The sixth staff (measures 38-47) contains a 4/4 time signature change and a melodic line. The seventh staff (measures 48-57) begins with a triplet of eighth notes. The eighth staff (measures 58-65) continues the melodic line. The ninth staff (measures 66-73) features a melodic line with accents. The tenth staff (measures 74-80) continues the melodic line. The final staff (measures 81-88) concludes the piece with a final cadence.