

DOMENICO ZIPOLI

Sonata per violino e continuo

Violino

THIS SCORE IS DEDICATED
TO THE MEMORY OF WERNER ICKING

Realization of the figured bass and typesetting by Luigi Cataldi

Non-commercial copying welcome

Violino

Sonata per violino e continuo

Domenico Zipoli
(1688-1726)

[Largo]

4

7

10

13

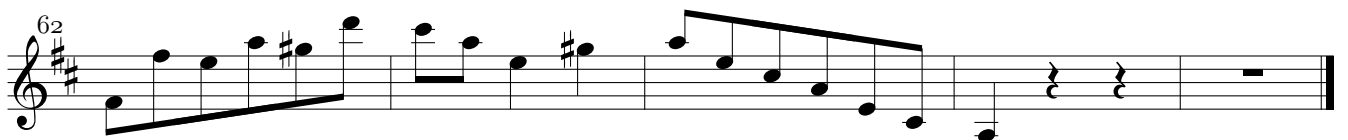
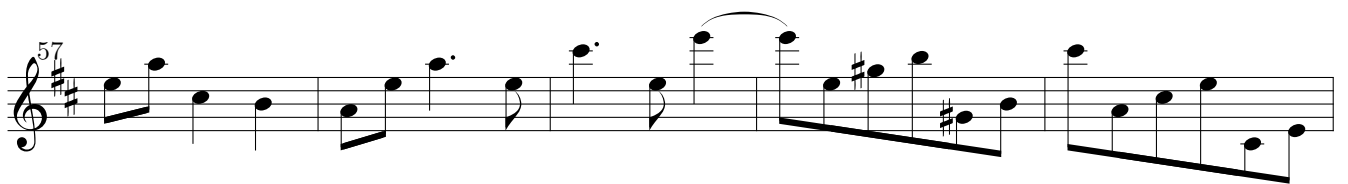
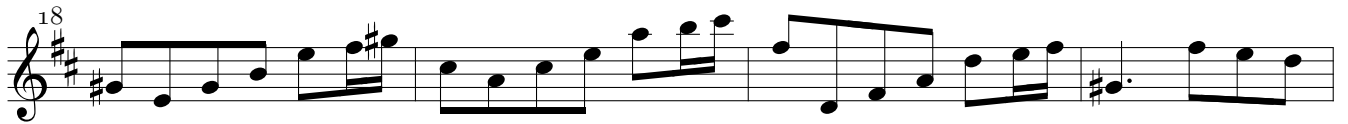
16

Allegro

5

9

14



[Largo]

Musical score for the Largo section, consisting of five staves of music in 3/4 time with a key signature of two sharps (F# and C#). The first staff starts with a treble clef and a 3/4 time signature. The music features a slow, melodic line with various note values including quarter, eighth, and sixteenth notes, as well as rests and slurs. Measure numbers 7, 13, 18, and 24 are indicated at the beginning of their respective staves.

[Allegro]

Musical score for the Allegro section, consisting of five staves of music in 12/8 time with a key signature of two sharps (F# and C#). The first staff starts with a treble clef and a 12/8 time signature. The music is characterized by a faster tempo and a more rhythmic, eighth-note driven melody. Measure numbers 3, 5, 7, and 9 are indicated at the beginning of their respective staves.

