

SONATE

à 3. 4. e 5.

Con alcune Allemand, Correnti e Balletti

à 3

Innsbruck 1653

William Young

?? – 1662

Published by Johan Tufvesson.

Non-commercial copying welcome

Revision : 1.3

Name	Instr.	Page
Sonata Prima	2vl, viol, bc	4
Sonata Secunda	2vl, viol, bc	5
Sonata Terza	2vl, viol, bc	6
Sonata Quarta	3vl, viol, bc	8
Sonata Quinta	3vl, viol, bc	10
Sonata Sesta	3vl, viol, bc	12
Sonata Settima	3vl, viol, bc	14
Sonata Ottava	3vl, viol, bc	16
Sonata Nona	3vl, viol, bc	18
Sonata Decima	3vl, viol, bc	19
Sonata Undecima	4vl, viol, bc	20
Allemand 1	2vl, viol, bc	22
Allemand 2	2vl, viol, bc	22
Corrente 1	2vl, viol, bc	23
Allemand 3	2vl, viol, bc	23
Corrente 2	2vl, viol, bc	23
Allemand 4	2vl, viol, bc	24
Allemand 5	2vl, viol, bc	24
Corrente 3	2vl, viol, bc	25
Corrente 4	2vl, viol, bc	25
Saraband 1	2vl, viol, bc	25
Corrente 5	2vl, viol, bc	26
Allemand 6	2vl, viol, bc	26
Corrente 6	2vl, viol, bc	27
Saraband 2	2vl, viol, bc	27
Allemand 7	2vl, viol, bc	27
Corrente 7	2vl, viol, bc	28
Balletto	2vl, viol, bc	28
Corrente 8	2vl, viol, bc	28
Corrente 9	2vl, viol, bc	29

4 Basso Continuo

Sonata Prima. à 3

William Young
(??-1662)

Canzona

9
4 2

19
7 6 5
4 4

27
4

33
7 6 #

39

44
#6 # 6 #

49
p

54
b p b

59
4 #

63
4 3 # #

67
7 6 # #

73
4 3 #6 # # 4 # #

Da Capo

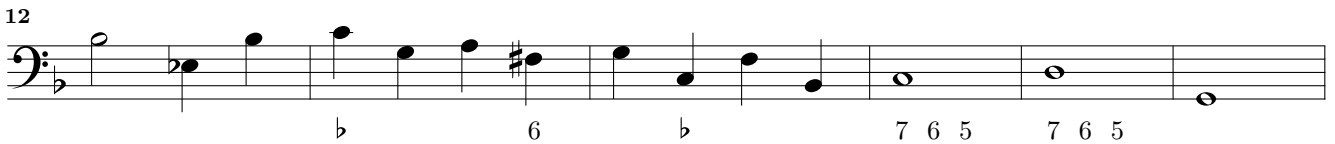
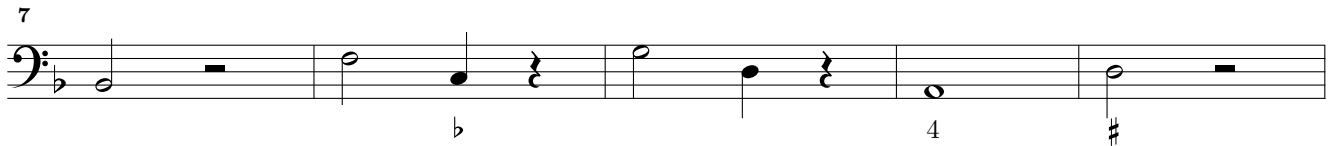
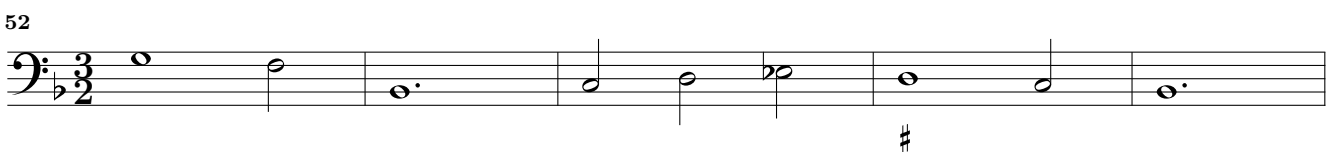
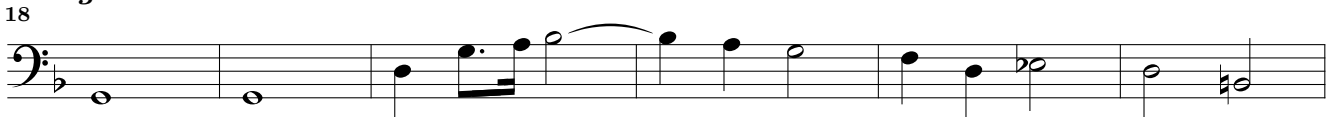
Sonata Secunda. à 3

Musical score for Sonata Secunda. à 3, measures 6-43. The score is written in bass clef with a common time signature (C). The key signature has one flat (B-flat). The notation includes various rhythmic values (quarter, eighth, and sixteenth notes) and rests. Fingerings are indicated by numbers 1-4 below the notes. Measure 11 contains a 3-measure rest. Measure 43 ends with a double bar line and a repeat sign.

Canzona

Musical score for Canzona, measures 51-69. The score is written in treble clef with a common time signature (C). The key signature has one flat (B-flat). The notation includes various rhythmic values (quarter, eighth, and sixteenth notes) and rests. Fingerings are indicated by numbers 1-4 below the notes. Measure 51 begins with a repeat sign. Measure 69 ends with a double bar line and a repeat sign.

Sonata Terza. à 3

*Allegro*

62

68

74

80

86

Canzona

91

96

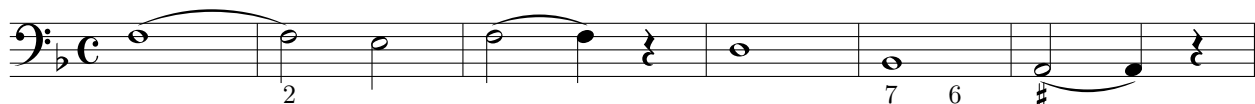
101

106

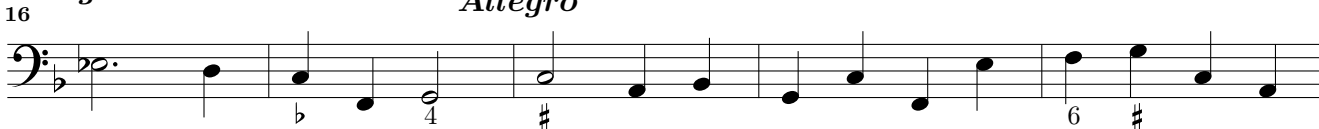
111

116

Sonata Quarta. à 4

Adagio*Allegro*

12

*Adagio**Allegro*

21



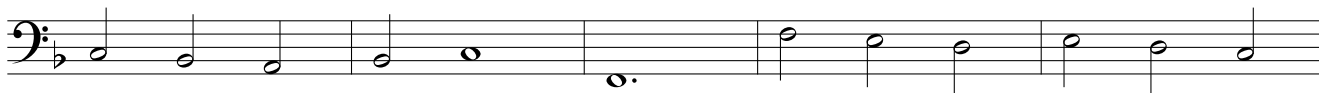
25



29



34



39



44



48



Allegro

53



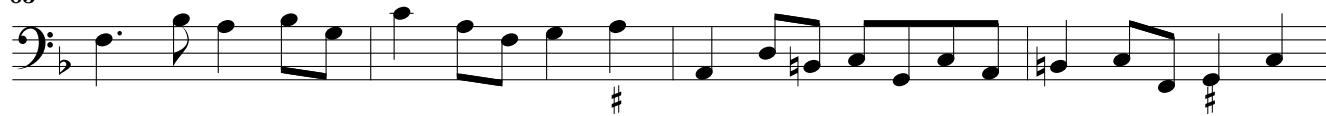
57



60



63

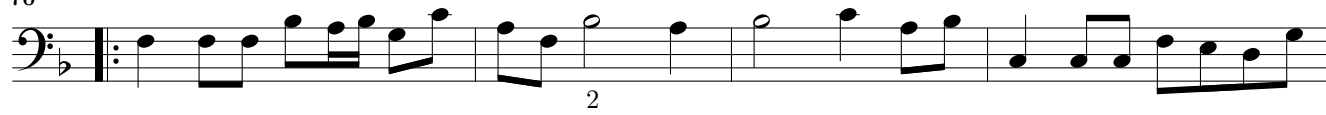


67



Canzona

70



74



78



82



87



91



96



Sonata Quinta. à 4

7 #6

4 # 7 6 6 7 6 5
4

7 6 7 6 5
4

6/4

4 #

2 # 2 # 2

6 # 6 #
5

p # *p* 6 b #

b # #

6/4

7 6 6 7 6 #

6 5

Canzona

4 3

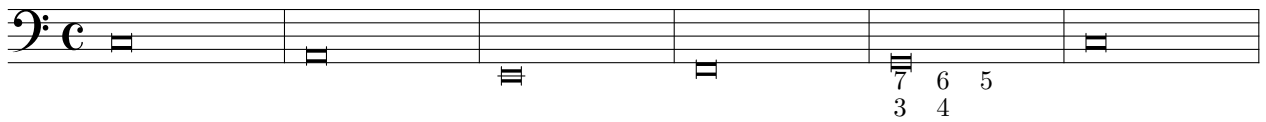
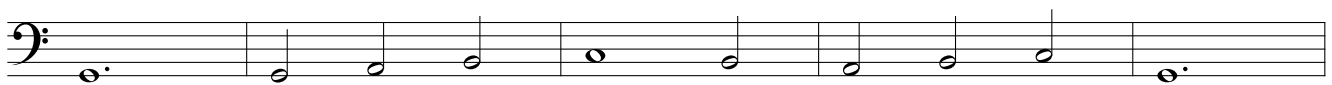
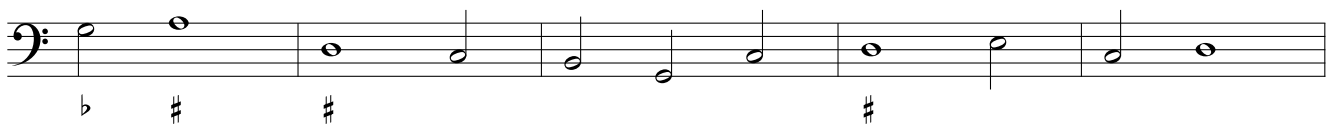
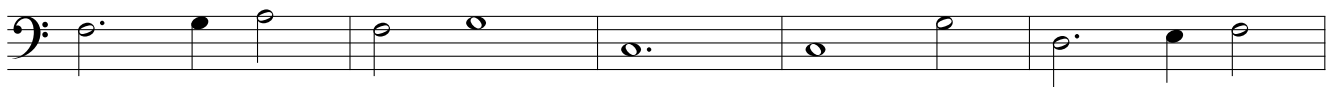
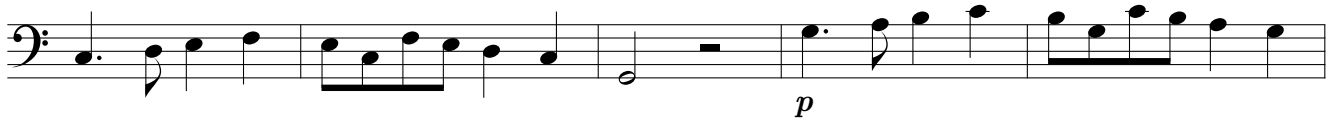
2

#6

b 4 #

4 3

Sonata Sesta. à 4

*Allegro*

7 6 # *p*

p # 6 # #

6 6 4 #

p 6

Canzona

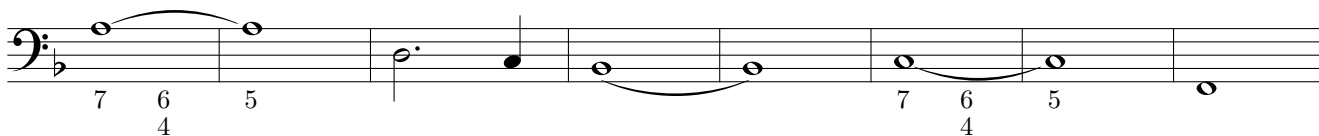
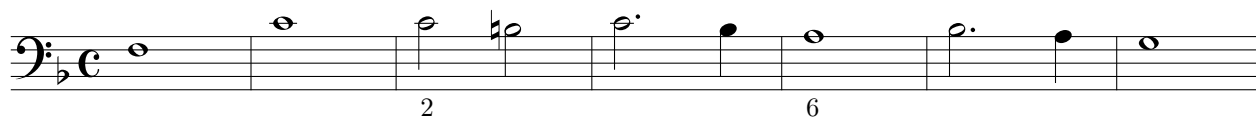
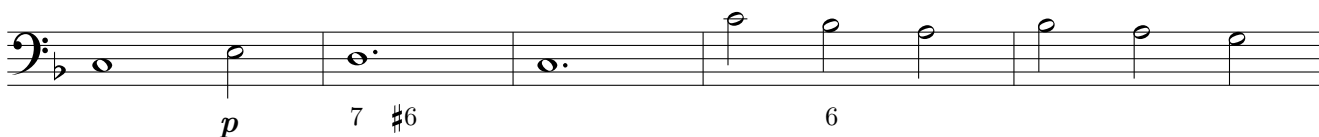
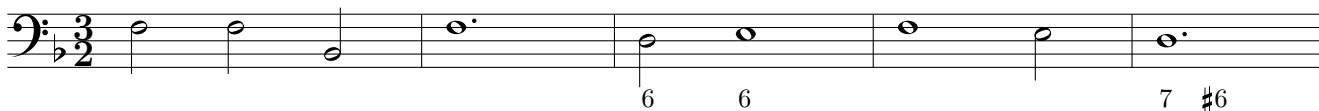
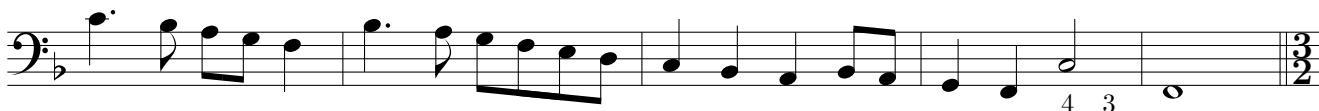
4 3 7 #6

6 6 5 4 #

6 5 4 # 4 #

4 # # 4 3

Sonata Settima. à 4

*Allegro*

7 #6 p 7 #6

b # p

6 p

p

p

Canzona

b6 2

4 3

4 3 4 3

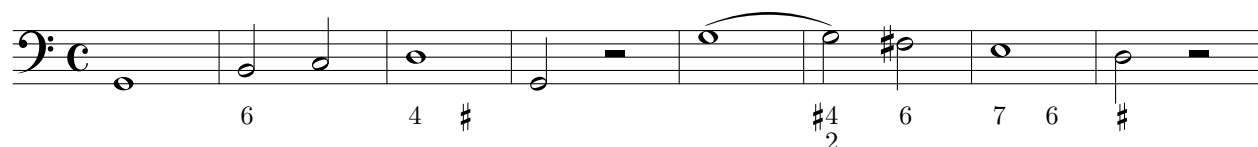
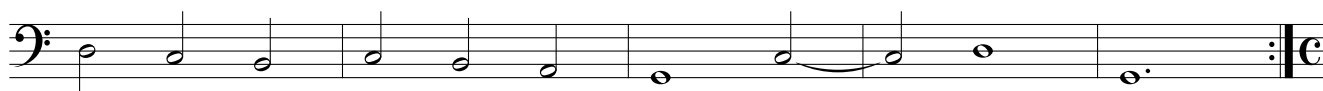
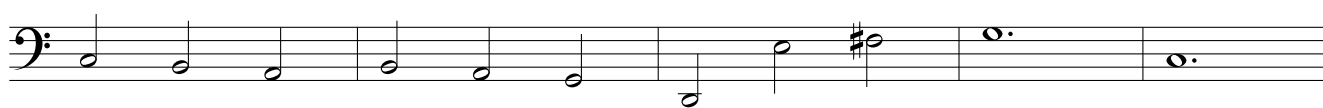
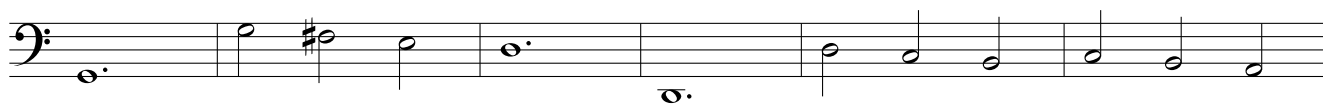
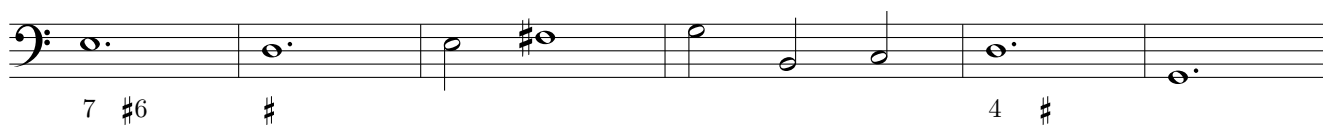
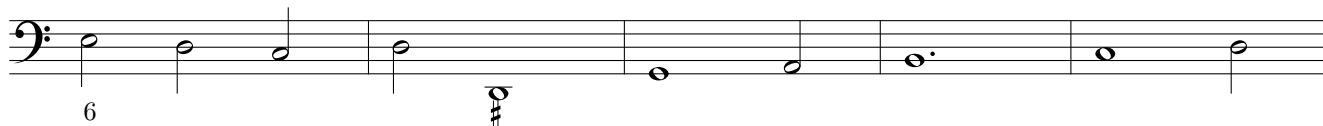
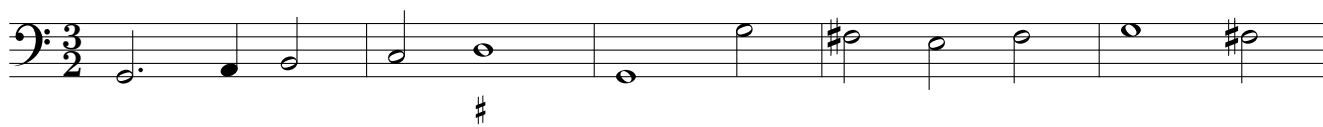
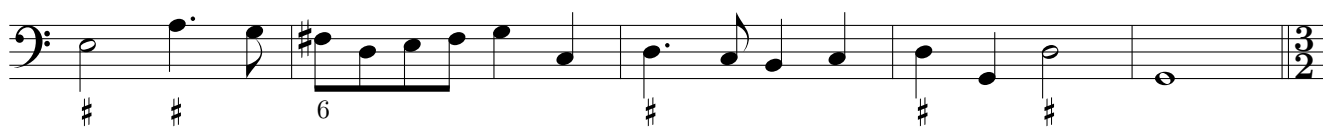
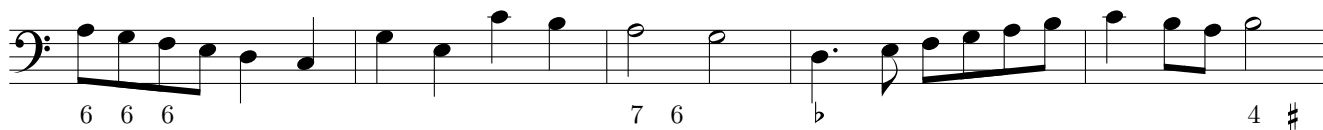
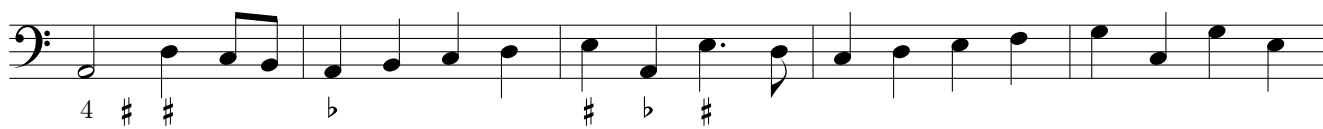
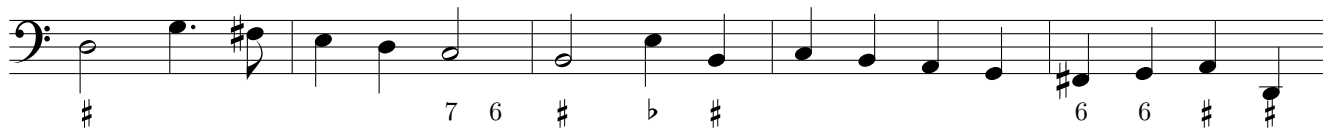
b 4 #

b # 6 7 6 4 3 7 6 5 4

4 # 4 #

4 3

Sonata Ottava. à 4

*Allegro*

Allegro

Musical score for the 'Allegro' section, consisting of seven staves of bass clef notation in common time. The music features various rhythmic patterns and accidentals, including sharps and naturals.

Canzona

Musical score for the 'Canzona' section, consisting of seven staves. The first staff is in treble clef, and the following six are in bass clef. The notation includes complex rhythmic figures and numerous figured bass symbols (numbers and accidentals) for the basso continuo.

Sonata Nona. à 4

Canzona

Sonata Decima. à 4

Musical score for the first section of Sonata Decima. à 4, featuring five staves of bass clef notation in 3/2 time. The music includes various note values, rests, and fingerings (7, 6, #, #, 6, 7, 6).

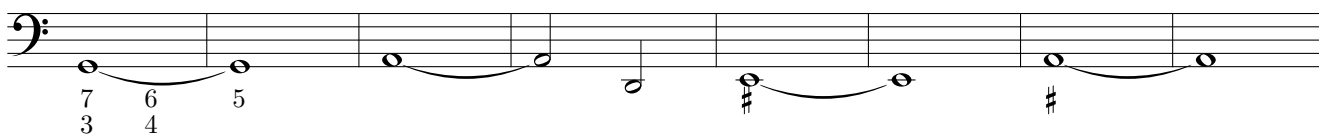
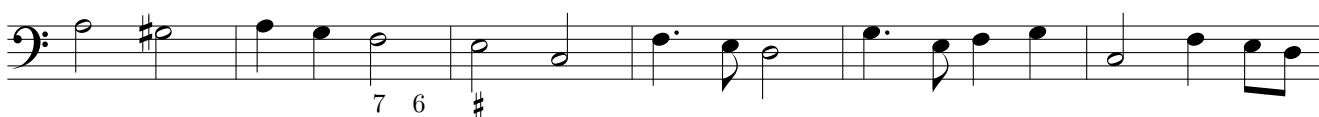
Allegro

Musical score for the second section of Sonata Decima. à 4, featuring three staves of bass clef notation in common time. The music is marked "Allegro" and features a more rhythmic, eighth-note pattern.

Canzona

Musical score for the third section of Sonata Decima. à 4, featuring five staves of mixed clef notation (treble and bass clefs) in common time. The music is marked "Canzona" and includes various note values and fingerings (7, 6, #, 4, #, 6, #, 7, 6, #, 6, #, 4, #, #, #, b, #, #, b, 4, #, #).

Sonata Undecima. à 5

*Allegro*

Resposte

Canzona

Allemand 1.

Musical score for *Allemand 1*, Basso Continuo part. The score consists of five staves of music in bass clef, common time, and one flat. It features various rhythmic patterns, accidentals, and figured bass notation.

Allemand 2.

Musical score for *Allemand 2*, Basso Continuo part. The score consists of eight staves of music in bass clef, common time, and one flat. It includes complex rhythmic figures, accidentals, and extensive figured bass notation.

Corrente 1.

Musical score for *Corrente 1*, Bass Continuo part. The piece is in 6/4 time and B-flat major. It consists of four staves of music. The first staff begins with a bass clef and a 6/4 time signature. The music features a mix of quarter and eighth notes, with some accidentals. The second staff ends with a repeat sign and a fermata. The third staff begins with a repeat sign and a fermata. The fourth staff ends with a repeat sign and a fermata. Fingerings are indicated by numbers 7, 6, and # below the notes.

Allemand 3.

Musical score for *Allemand 3*, Bass Continuo part. The piece is in common time and B-flat major. It consists of three staves of music. The first staff begins with a bass clef and a common time signature. The music features a mix of quarter and eighth notes, with some accidentals. The second staff begins with a repeat sign and a fermata. The third staff ends with a repeat sign and a fermata. Fingerings are indicated by numbers 6, #, and 4 below the notes.

Corrente 2.

Musical score for *Corrente 2*, Bass Continuo part. The piece is in 6/4 time and B-flat major. It consists of four staves of music. The first staff begins with a bass clef and a 6/4 time signature. The music features a mix of quarter and eighth notes, with some accidentals. The second staff ends with a repeat sign and a fermata. The third staff begins with a repeat sign and a fermata. The fourth staff ends with a repeat sign and a fermata. Fingerings are indicated by numbers # and # below the notes.

Allemand 4.
Allemand 5.

Corrente 3.
Corrente 4.
Saraband 1.

Corrente 6.

Musical score for Corrente 6, Basso Continuo part. The piece is in 6/4 time and B-flat major. It consists of four staves of music. The first staff begins with a treble clef and a key signature of one flat. The music features a mix of eighth and sixteenth notes, with some rests. The second staff ends with a double bar line and repeat dots. The third staff begins with a repeat sign. The fourth staff ends with a double bar line and repeat dots.

Saraband 2.

Musical score for Saraband 2, Basso Continuo part. The piece is in 6/4 time and B-flat major. It consists of four staves of music. The first staff begins with a treble clef and a key signature of one flat. The music features a mix of eighth and sixteenth notes, with some rests. The second staff ends with a double bar line and repeat dots. The third staff begins with a repeat sign. The fourth staff ends with a double bar line and repeat dots.

Allemand 7.

Musical score for Allemand 7, Basso Continuo part. The piece is in 3/4 time and B-flat major. It consists of five staves of music. The first staff begins with a treble clef and a key signature of one flat. The music features a mix of eighth and sixteenth notes, with some rests. The second staff ends with a double bar line and repeat dots. The third staff begins with a repeat sign. The fourth staff ends with a double bar line and repeat dots. The fifth staff ends with a double bar line and repeat dots.

Corrente 7.

Musical score for *Corrente 7.* in 6/4 time, one flat. The score consists of four staves. The first staff includes a fingering '7 6' and an accidental '#'. The second and fourth staves end with repeat signs.

Balletto

Musical score for *Balletto* in 6/4 time, one flat. The score consists of six staves. The second, fourth, and sixth staves end with repeat signs. The score includes various accidentals and fingerings such as 'b', '#', and '6'.

Corrente 8.

Musical score for *Corrente 8.* in 6/4 time, one flat. The score consists of two staves. The first staff includes a fingering '6' and an accidental 'b'. The second staff ends with a repeat sign.

