

Bassposaune

Die Puppenfee

Vorspiel

Josef Bayer
1852 - 1913

Allegro 17 **Moderato** 2 14 1. 2 35 2. 2

ff

37 **rit. Moderato** Walzer 25 4 1. 2

p

69 2. 2

ff *f*

76 2 rit. 30

ff

111 **Allegro** 7 6

mf

126 *mf* *f* *ff*

1 **Allegro** No. 1 11

12 6 **Moderato** 16 *ff* *mf*

37 14

2
Bassposaune

Bassposaune

51

No. 2

5



q = 110

1 [Allegro ma non troppo]



6



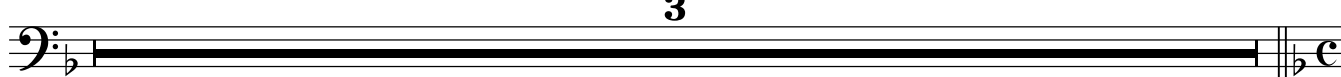
10



12



28



No. 3 Auftritt des Bauern

1 Lento q = 60



7



12



17

Tempo 1 q = 60



23



Musical notation for the first piece, bass clef, 2/4 time signature, starting with a bass line of eighth notes.

1 Moderato No. 4 Engländer

37

Musical notation for the second piece, bass clef, 2/4 time signature, consisting of a single bar.

1 Moderato No. 5 Schlechte Puppe

Musical notation for the third piece, bass clef, 2/4 time signature, starting with a 5-measure rest.

Musical notation for the third piece, bass clef, 2/4 time signature, measures 21-30 with rests and dynamics.

Musical notation for the third piece, bass clef, 3/4 time signature, measures 41-44 with rests and dynamics.

Musical notation for the third piece, bass clef, 2/4 time signature, measures 45-56 with a 12-measure rest.

Musical notation for the third piece, bass clef, 3/4 time signature, measures 57-66 with a 11-measure rest.

No. 6 Die Oberösterreicherin

Musical notation for the fourth piece, bass clef, 3/4 time signature, measures 1-11 with a 3-measure rest and a 7-measure rest.

Musical notation for the fourth piece, bass clef, 3/4 time signature, measures 12-18 with a 7-measure rest and dynamics.

Musical notation for the fourth piece, bass clef, 3/4 time signature, measures 19-28 with a 7-measure rest and first/second endings.

Zwischenspiel

Allegro

Musical notation for the fifth piece, bass clef, 2/4 time signature, measures 29-47 with a 19-measure rest.

Bassposaune

Bassposaune
No. 7 Baby

1 Allegretto

7 1. 10 2. 7 1. 18 2.

19

8 Vivace 3

33

mf rit. 3

41 Lento

12 Lento 2

Zwischenspiel

57 Presto

6 1. 2. 64 2

1 Allegretto

2 8 7 1. 20 2.

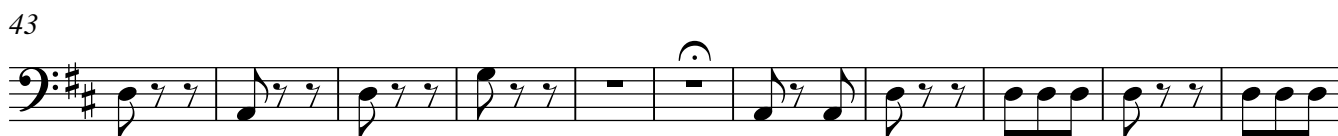
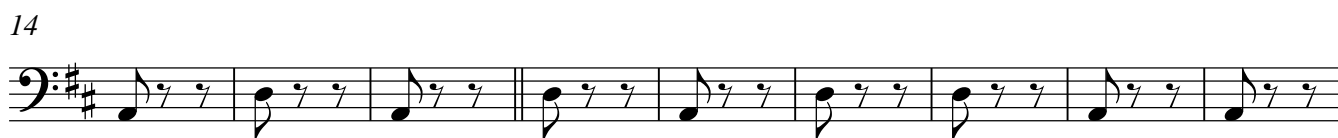
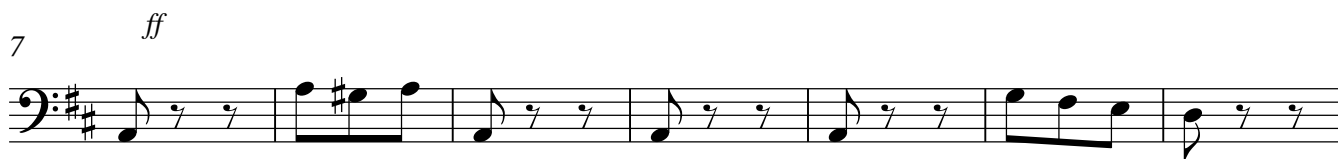
21

10 8

mf

1 Vivace $q. = 72$

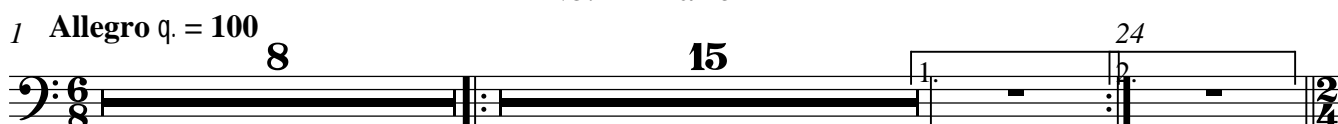
No. 9 Spanierin



No. 10 Japanerin

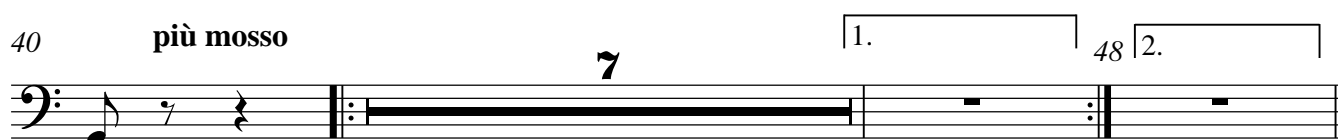


No. 11 Harlekin

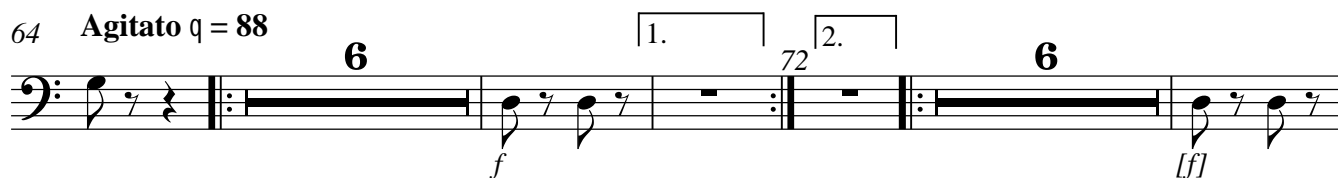


25 Allegretto $q = 92$ 

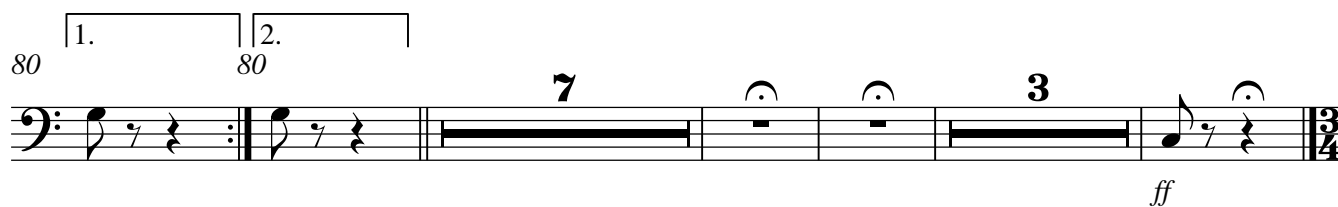
32

40 *più mosso*49 Allegretto $q = 92$ 

56

64 *Agitato* $q = 88$ 

80



No. 12

1 [Tempo ad lib.]

Moderato q. = 54

5 6

15

rit.

f

Tempo di Valse

4

22

ff

25

6

54

30

1 Allegro

No. 13

2 14 1. 2 17 2. 2

19

36

Moderato

4

1 Andante

No. 14

12 3

1 [Andante] No. 15 Tempo di Valse

25 6

[p] <

No. 16 Ballabile ("dancing possibly")

1 q = 144

3 3 3

13

ff

6

Bassposaune

23 1.

4

31 2. 1.

9 **4**

mf

48 2.

f

56 1. 2. 1. 2.

6 64

f

65 **Lento** q = 144

4

ff

75

82 q = 112

8 **5**

p

99 1. 100 2. meno mosso 7 1. 108 2.

arco *p*

109 q = 88

14 1. 2 123 2. 2

125 1. 132 2. 1. 147 2.

7 **14** **2**

Bassposaune

148 **7** *q* = 144

f

159

ff

164 **Vivace** *q* = 144

f

171

ff

175

fz

180 **Moderato**

f

187

ff

204 **Tempo di Valse** *q* = 144

ff

225

ff

236

25

Bassposaune

Bassposaune

261 **6** **6** **4**

p *mf*

280 **1.** **282** **2.** **2** **14** **1.** **2**

f

298 **2.** **2** **9** **mf**

f *mf*

313 **4** **1.** **317** **2.** **8** **3/4**

f

l *q* = 144 **10** **No. 17** **h = 100** **Marcia** **4**

l *q* = 144 *h* = 100

No. 18 Marcia

1 h = 100

1. *f*

7

13

18

24

29

33

14

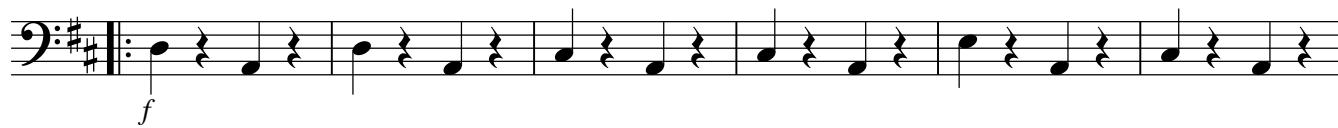
f

49

3

f

53



59



65



70



76



81



1 q = 160

5 **11** 1. 20 2.

21 *f*

29

36 **Presto**

42 *rit.*

No. 20 Valse

1 q = 144 **30** **Allegro** **2** **14** 1. 2 47 2

49 **Allegro** **7** *mf* < *ff*

61 **3** **3**

66 **Tempo di Valse** **14**

82 **Moderato** **2** *p* *ffz* *ff*